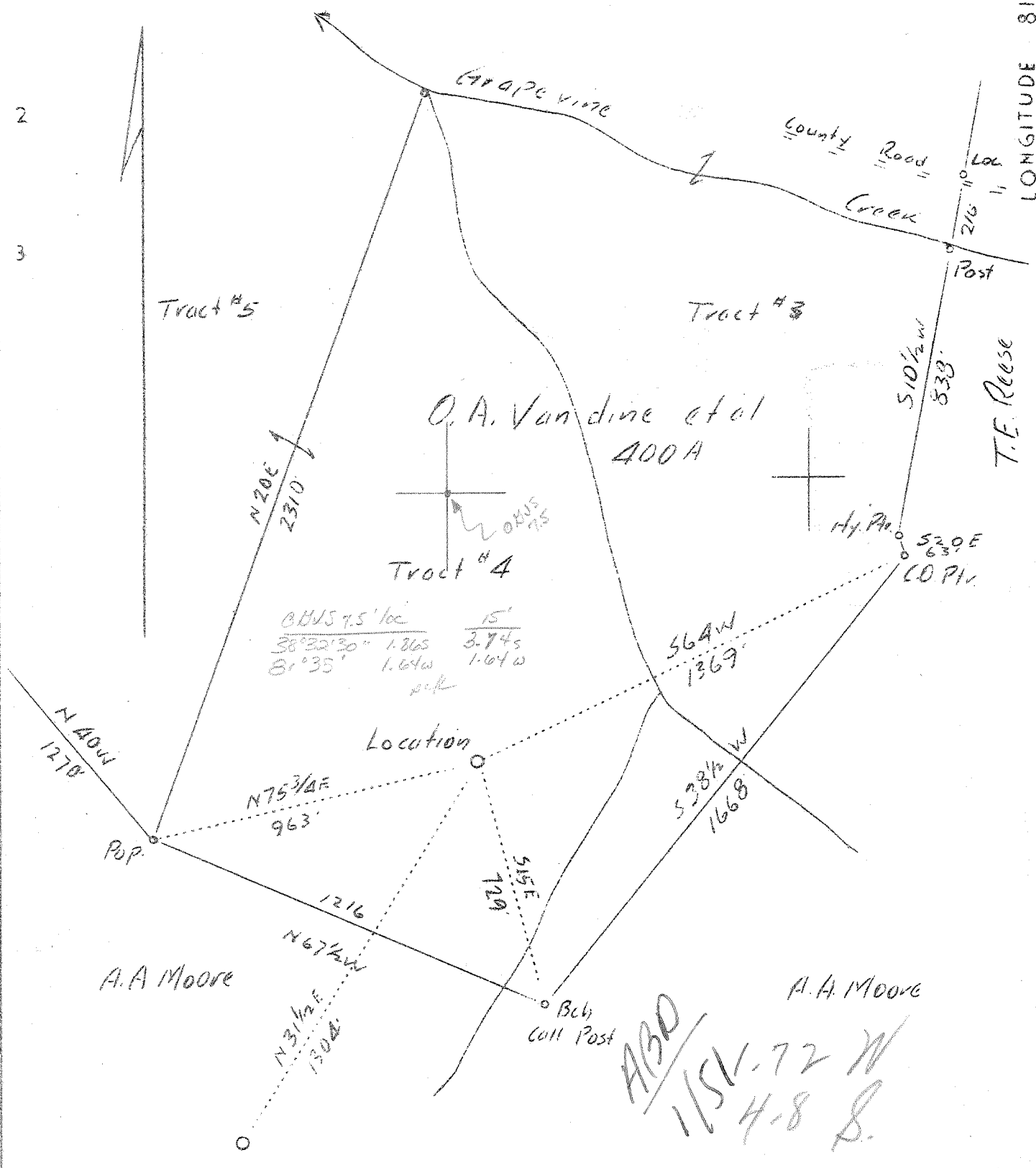


LATITUDE 38° 35'

LONGITUDE 81° 35'



Company West Virginia Gas Corp.
 Address 401 Union Bldg., Charleston, W.Va.
 Farm O.A.Vandine et al
 Tract No. 4 Acres 400 Lease No. 255
 Well (Farm) No. 2 Serial No. 0-30
 Elevation (Spirit Level) 862.4 (Stadia)
 Quadrangle Kenna
 County Kanawha District Poca
 Engineer Robert S. Hyde
 Engineer's Registration No. 646
 File No. 3 Drawing No. W.O.
 Date Oct. 20, 1937 Scale 1"=400'

STATE OF WEST VIRGINIA
 Department of Mines
 OIL AND GAS DIVISION
 CHARLESTON

WELL LOCATION MAP
 File No. KAN-495
 894

+ Denotes location of well on United States Topographic Maps, scale 1 to 62,500, latitude and longitude lines being represented by border lines as shown.
 — Denotes one inch spaces on border line of original tracing.

WEST VIRGINIA DEPARTMENT OF MINES

OIL AND GAS DIVISION

WELL RECORD

Permit No. Kan-494

Gas Well

Kenna Quad.

CASING & TUBING

Company	West Virginia Gas Corp.	13	103'4"	103'4"
Address	401 Union Bldg., Charleston, W.Va.	10	603'2"	
Farm	O.A.Vandine et al	8 5/8	1838'6"	1838'6"
Location	Acros 400 Grapevine Creek	6 5/8	4882'9"	4882'9"
Well No.	2-Ser. 0-30			
District	Elev. 862.4			
Surface	Poca County Kanawha	2	4988'	4988'
Mineral	O.A.Vandine et al, Charleston, W.Va.			
Drilling	Same			
Date Shot	Commenced 12/20/37			
Volume	Completed 5/31/38			
Rock Press.	5967M Cu.Ft.			
	1340# 1 hrs.			

PACKER

Kind	Bottomhole Choke
Size	2" 4.7#
Depth	4895'
Perf. top	4958
Perf. bot.	4964

CASING CEMENTED: 30 bags
 6 5/8", 110 bags cement,
 3 bags aquagel behind
 8 5/8".

Formation	Color	Top	Base	Result	Formation	Color	Top	Base	Result
Slate		0	118						
Red Rock		118	125	Water	Gas	4955-4957	test 9/10 hr.	in 65'	
Lime		125	140	65' and	Gas	4957-4959	test 15/10 Hg.	6 5/8"	
Slate		140	170	103'					(5967 M)
Red Rock		170	239	Hole Full.	Gas	4962	test 15/10" in		
Slate	White	239	245						6 5/8"
Red Rock		245	265						
Slate	White	265	285						
Red Rock		285	375						
Slate	White	375	390						
Sand	Red	390	432						
Slate	Black	432	450						
Lime		450	480						
Sand		480	525						
Slate		525	605						
Sand		605	760						
Slate		760	1050						
Gas Sand		1050	1084						
Slate	Blue	1084	1098						
Salt Sand		1098	1545						
Slate	Blue	1545	1569						
Little Lime		1569	1598						
Pencil Cava		1598	1617						
Big Lime		1617	1755						
Injun Sand		1755	1805						
Slate & Shells		1805	1865						
Slate		1865	2180						
Lime Shells		2180	2200						
Shale		2200	2210						
Berea Sand		2210	2223						
Slate & Shells		2223	2590						
Slate	White	2590	3285						
Lime Shells		3285	3550						
Slate	White	3550	3727						
Shale	Brown	3727	3740						
Slate	White	3740	3790						
Shale	Brown	3790	3820						
Slate	White	3820	3870	Gas					
Shale	Brown	3870	3996	3955'					
Slate	White	3996	4612						
Shale	Brown	4612	4838						
Corniferous Lime		4838	4953						
Oriskany Sand		4953	4970						
TOTAL DEPTH		4970							