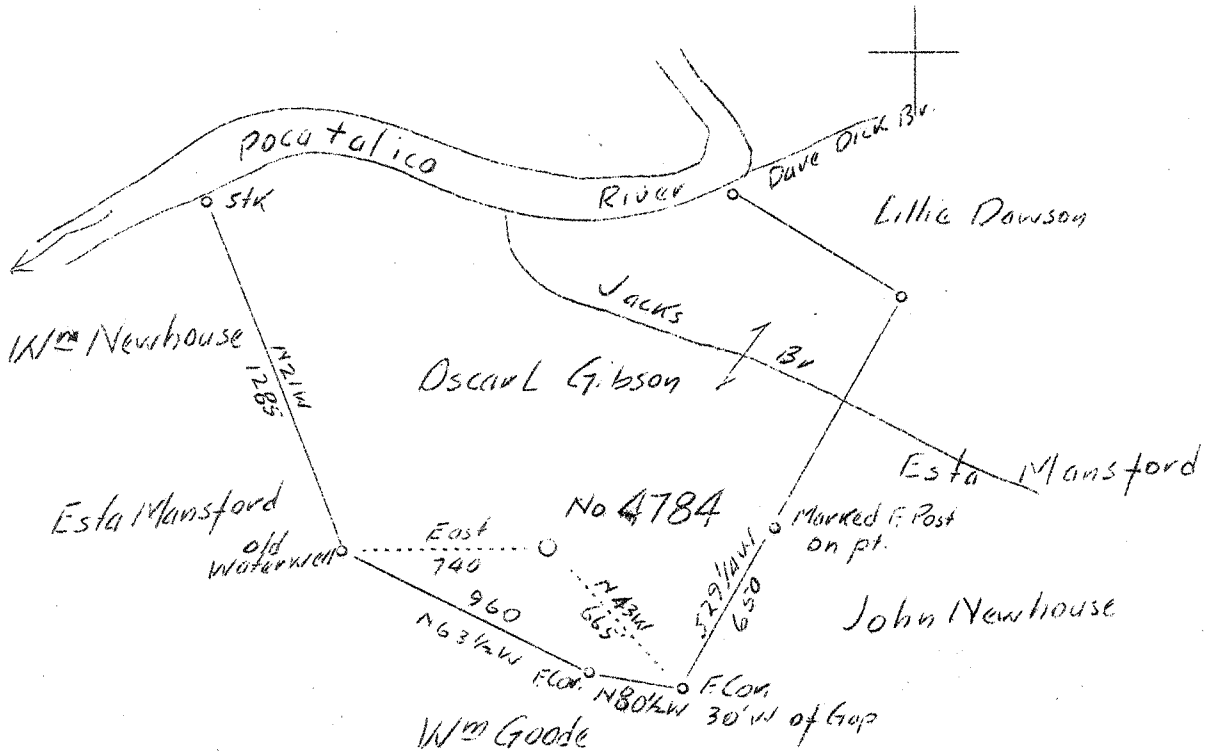


M

LATITUDE 38° 35'

LONGITUDE 81° 35'



ABD
12/46

2.71W
3.58

Company	United Fuel Gas Co.
Address	Charleston, W. Va.
Farm	Oscar L. Gibson
Tract	Acres 60 Lease No. 40490
Well (Farm) No.	1 Serial No. 4784
Elevation (Spirit Level)	
Quadrangle	Konna <u>S6</u>
County	Kanawha District Poca
Engineer	G.A. Cunningham
Engineer's Registration No.	659
File No.	62-71 Drawing No.
Date	Nov. 3, 1937 Scale 1"-660'

STATE OF WEST VIRGINIA
 Department of Mines
 OIL AND GAS DIVISION
 CHARLESTON

WELL LOCATION MAP
 File No. KAN-496-D

+ Denotes location of well on United States Topographic Maps, scale 1 to 62,500, latitude and longitude lines being represented by border lines as shown.

- Denotes one inch spaces on border line of original tracing.

WEST VIRGINIA DEPARTMENT OF MINES

OIL & GAS DIVISION

WELL RECORD

Permit No. Kan-496

Gas Well

Kenna Quad.

CASING & TUBING

Company	United Fuel Gas Co.	14	493	493
Address	Charleston, W. Va.	10	1250	1250
Farm	Oscar L. Gibson - Acres 60	8-1/4	1789	1789
Location	Poca River	7	4810	4810
Well No.	4784 Elev. 740.05			
District	Poca County Kanawha			
Surface & Min. Address	Oscar L. Gibson Sissonville, W. Va.			
			CASING CEMENTED:	
			Size - 6-5/8"	
			Feet 1789	
Drilling Commenced	- Nov. 16, 1937			
Drilling Completed	- April 25, 1938			
Date shot	Not shot			
Open Flow	65/10ths Merc. in 7 inch			
Volume	14,210,000 c. f.			
Rock Pressure	1575 lbs - 48 hrs.			
Salt Water	1200			

Formation	Color	Har	TOP	Base Result	Formation	Color	Har	TOP	Base Result
Wood Conductor			0	15					
Clay			15	50					
Sand			50	80					
Slate & Shell			80	115					
Lime			115	130					
Slate & Shell			130	180					
Red Rock			180	234					
Slate & Shell			234	315					
Red Rock			315	345					
Slate			345	425					
Pink Rock			425	470					
Slate			470	485					
Sand			486	534					
Slate			534	540					
Sand			540	658					
Slate & Shell			658	704					
Sand			704	758					
Slate & Shell			758	943					
Sand			943	960					
Slate			960	1002					
Sand			1002	1020					
Slate & Shell			1020	1100					
Salt Sand			1100	1490					
Maxon Sand			1490	1540					
Little Lime			1540	1565					
Slate Break			1565	1567					
Lime Shell			1567	1575					
Pencil Cave			1575	1578					
Fig Lime			1578	1719					
Big Injun Sand			1719	1782					
Slate			1782	1787					
Lime Shell			1787	1790					
Slate & Shells			1790	1880					
Lime Shell			1880	1895					
Slate & Shells			1895	2170					
Brown Shale			2170	2184					
Berea Grit Sand			2184	2194					
Slate & Shell			2194	3395					
Brown Shale			3395	3420					
Lime			3420	3440					
Slate & Shell			3440	3690					
Shale			3690	3712					
Slate & Shell			3712	3785					
Brown Shale			3785	4012					
Slate & Shell			4012	4460					
Brown Shale			4460	4680					
Blue Shale			4680	4714					
Black Shale			4714	4792					
Corniferous Lime			4792	4902					
Oriskany Sand			4902						
Total Depth	Cable Measure			4920					

14" O.C. Casing run plain at 493 S.L.M.

Hole full water at 1200 ft.
10-3/4 casing run at 1260 ft. S.L.M.

8-5/8" Casing run at 1789 S.L.M.

Gas 4905

WEST VIRGINIA DEPARTMENT OF MINES
OIL & GAS DIVISION
W E L L R E C O R D

Permit No. Kan-496-D
- Quad.

Gas Well

Company	United Fuel Gas Co.
Address	Box 1256, Charleston, W. Va.
Farm	Oscar L. Gibson ACRES 60
Location	Jacks Branch of Poca River
Well No.	4784 ELEV. 740.05
District	Poca - Kanawha County
Surface & Mineral	Oscar L. Gibson, Sissonville, W. Va.
Commenced	May 8, 1941
Completed	May 28, 1941
Shot	5/28/41 - depth 4903
Open Flow	4 --
Volume	Gas Well
Rock Pressure	--
Water	--

CASING & TUBING
(No record given)

DRILLED DEEPER

Original Depth	4920
Oriskany Sand	4902 4952
New Total Depth	4952 Steel Line measurement.