

Company HAYS OIL AND GAS CO.
 Address CLENDENIN, W.VA.
 Farm H. E. EVANS
 Tract ONE Acres 40.0 Lease No. _____
 Well (Farm) No. ONE Serial No. _____
 Elevation (Spirit Level) 721.0
 Quadrangle KENNA, (3E)
 County KANAWHA District POCA
 Engineer A. E. PRICE
 Engineer's Registration No. 819
 File No. _____ Drawing No. _____
 Date Sept. 29, 1937 Scale 1" = 40 Poles

STATE OF WEST VIRGINIA
 DEPARTMENT OF MINES
 OIL AND GAS DIVISION
 CHARLESTON

now 497

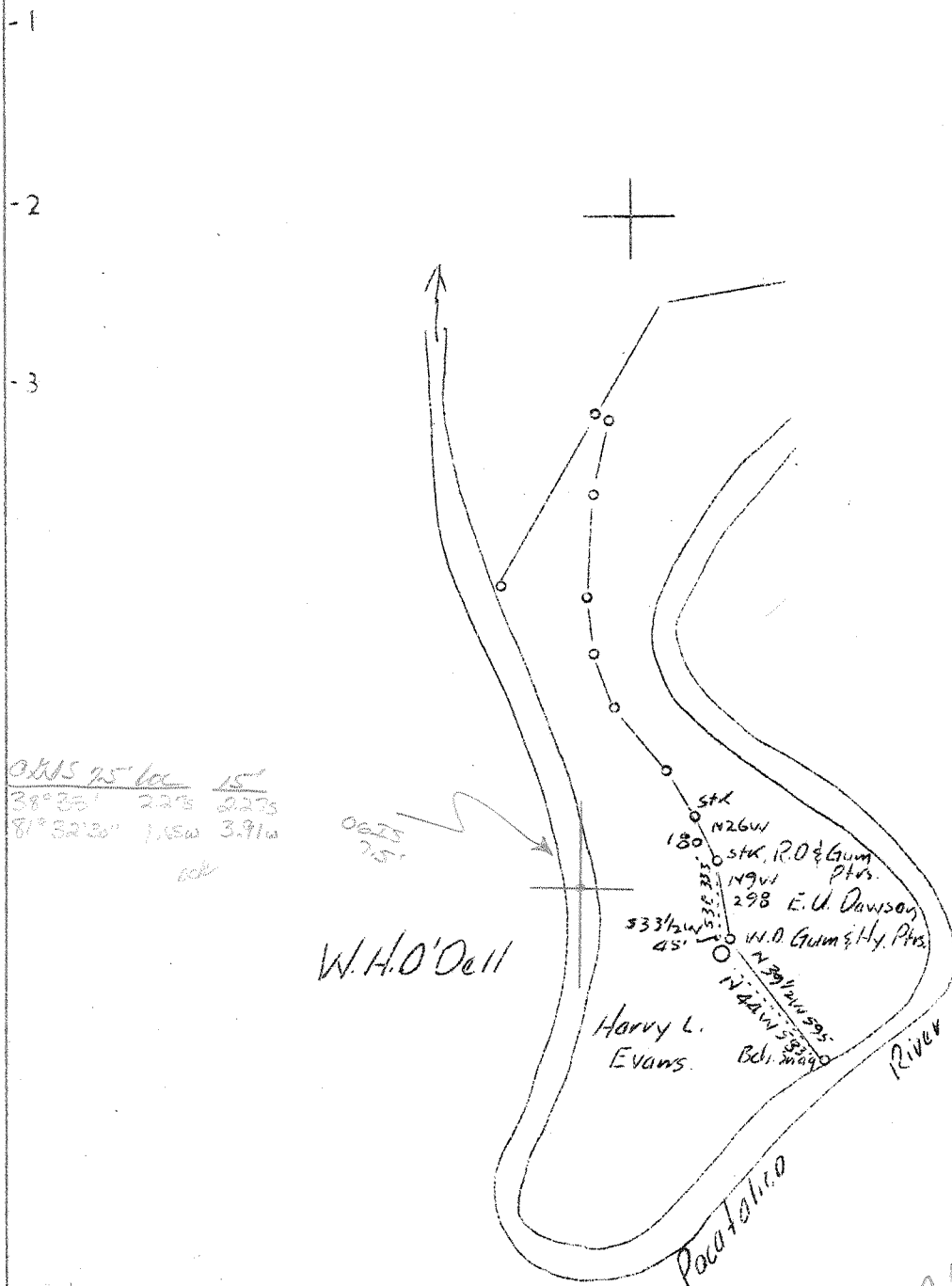
WELL LOCATION MAP
 FILE NO. KAN-486

+ Denotes location of well on United States Topographic Maps, scale 1 to 62,500, latitude and longitude lines being represented by border lines as shown.

- Denotes one inch spaces on border line of original tracing.

LATITUDE 38° 35'

LONGITUDE 81° 30'



OWS 75' 15'
 38°35' 22" 2273
 81°32'3" 1.5w 3.91w
 60'

Ida P. Gibson

W.H.O'Dell

Harry L. Evans

ABD
 6/48

4.08 W
 2.278

Company	Hays Oil & Gas Co.
Address	Clendenin, W.Va.
Farm	Harry L. Evans
Tract	Acres 32 Leasc No.
Well (Farm) No.	1 Serial No.
Elevation (Baro)	755
Quadrangle	Kenna JK
County	Kanawha District Poca
Engineer	G.A. Cunningham
Engineer's Registration No.	659
File No.	Drawing No.
Date	Nov. 4, 1937 Scale 1"=660'

STATE OF WEST VIRGINIA
 Department of Mines
 OIL AND GAS DIVISION
 CHARLESTON

WELL LOCATION MAP

File No. KAN-427

+ Denotes location of well on United States Topographic Maps, scale 1 to 62,500, latitude and longitude lines being represented by border lines as shown.

— Denotes one inch spaces on border line of original tracing.

WEST VIRGINIA DEPARTMENT OF MINES

OIL AND GAS DIVISION

W E L L R E C O R D

Permit No. Kan-497

Gas Well

Kenna Quad.

CASING & TUBING

Company	Hays Oil & Gas Co.	10	644 $\frac{1}{2}$
Address	Clondomin, W.Va.	8 $\frac{1}{4}$ "	1752 1752
Farm	Evans and Dawson Acres 81	8 $\frac{1}{4}$ "	4842 4842
Location	Poca River		
Well No.	1 Elev. 765	PACKER	
District	Poca County Kanawha		
Surface	Evans and Dawson, Sissonville, W.Va.	Kind	7" O.D. Shoe
Mineral	Hays Oil and Gas Co. & United Fuel		8 $\frac{1}{2}$ " Shoe
Drilling	Commenced Nov. 18, 1937 Gas Co.	Depth	4842
	Completed March 1, 1938		
Volume	9,971,000 Cu.Ft.		
Rock Press.	1780# 48 hrs.	CASING CEMENTED: 8 $\frac{1}{4}$ " and 7" O.D.	

Formation Color ^{Mar} TOP BASE RESULT Formation Color ^{Mar} TOP BASE RESULT

Formation	Color	TOP	BASE	RESULT	Formation	Color	TOP	BASE	RESULT
Clay		0	12						
Sand		12	70						
Red Rock		70	90						
Sand		90	100	Water					
Red Rock		100	130	90'					
Slate		130	150						
Red Rock		150	198						
Slate		198	215						
Red Rock		215	239						
Slate&Shells		239	322						
Red Rock		322	379						
Slate&Shells		379	468						
Sand		468	498						
Slate&Shells		498	540						
Sand		540	582	Oil					
Slate&Shells		582	630	1078					
Slate	Black	630	665						
Slate&Shells		665	721	Water					
Sand		721	830	1120 to					
Slate		830	840	1190					
Sand		840	895						
Slate&Shells		895	1030						
Sand		1030	1045						
Slate		1045	1060						
Sand		1060	1480						
Slate		1480	1497						
Little Lime		1497	1530						
Pencil Cave		1530	1533						
Big Lime		1533	1685						
Injun Sand		1685	1724						
Slate		1726	1750						
Lime		1750	1857	Sh. Gas					
Slate		1857	1955	1715					
Slate & Shells		1955	2900						
Slate&Shells		2900	3345						
Shale	Brown	3345	3400						
Lime		3400	3401						
Shale	Round	3501	3950	Gas					
Slate&Shells		3950	4430	4943					
Shale	Brown	4430	4666						
Slate		4666	4695	Gas					
Shale		4695	4825	4958					
Top of Lime		4825	4936						
Oriskany Sand		4936	4970						

CORNIFEROUS LIME NOT DRILLED THROUGH

STATE OF WEST VIRGINIA
DEPARTMENT OF MINES



N. P. RHINEHART
CHIEF

CHARLESTON

April 14, 1938

Hays Oil & Gas Company
Clendenin, West Virginia

Gentlemen:

We note from our files that we have issued to you two Permits for Well No. 1, on the H. L. Evans Farm; Permits No. Kan-486, and 497. One Well is on the 32 acre tract, and the other on a 40 acre tract. Do you wish to designate both of these wells as No. 1?

Very truly yours,

Marie E. Giffith

Secretary
OIL AND GAS DIVISION

MG/ar

Gentlemen:

Regarding above, permit No. 486 is to be cancelled, and permit No. 497 has been drilled, well record enclosed.

For your information wish to state that the two leases on which you issued permits were combined and we drilled one well only (497)

Hays Oil & Gas Company,

By Lela Mason
Secy.

Kan 486-C

497
4952