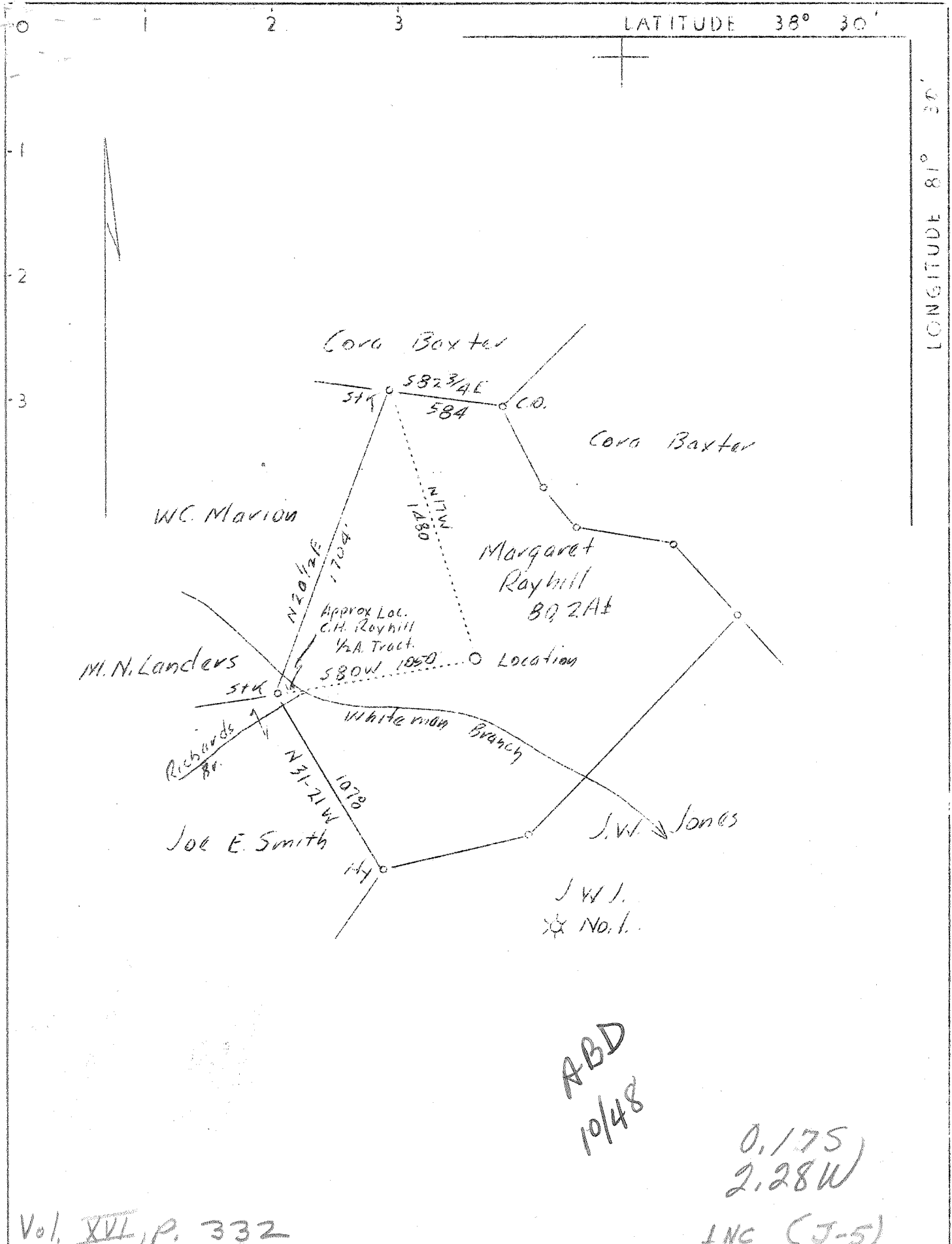


4-7M

P



ABD  
10/48

0,175  
2,28W

Vol. XVI, P. 332

INC (J-5)

|   |  |
|---|--|
| Company <u>Columbian Carbon Co.</u>               | STATE OF WEST VIRGINIA<br>Department of Mines<br>OIL AND GAS DIVISION<br>CHARLESTON  |
| Address <u>Box 1240, Charleston, W.Va.</u>        |  |
| Farm <u>Margaret Rayhill</u>                      | WELL LOCATION MAP  |
| Tract <u>Acres 80.2</u> Lease No. <u>C-219</u>    |  |
| Well (Farm) No. <u>1</u> Serial No. <u>6W-408</u> | File No. <u>KAN-509</u>  |
| Elevation (Spirit Level) <u>838'</u>              | + Denotes location of well on United States Topographic Maps, scale 1 to 62,500, latitude and longitude lines being represented by border lines as shown.<br><br>— Denotes one inch spaces on border line of original tracing. |
| Quadrangle <u>Charleston NE</u>                   |  |
| County <u>Kanawha</u> District <u>Elk</u>         |  |
| Engineer <u>J. N. Sell</u>                        |  |
| Engineer's Registration No. <u>772</u>            |  |
| File No. _____ Drawing No. _____                  |  |
| Date <u>Jan. 11, 1938</u> Scale <u>1"=660'</u>    |  |

6-6-92 Deep Well

WEST VIRGINIA DEPARTMENT OF MINES  
OIL & GAS DIVISION

W E L L R E C O R D

Permit No. Kan-509

Gas Well

Charleston N. E. Quad.

CASING & TUBING

|                    |  |                        |         |         |
|--------------------|--|------------------------|---------|---------|
| Company            | Columbian Carbon Co.   | 14                     | 43'9"   | 43'9"   |
| Address            | Box 1240, Charleston, W. Va.   | 10-3/4                 | 383'6"  | Pulled  |
| Farm               | Margaret Rayhill - Acres 80.2  | 8-5/8                  | 1571'4" | 1571'4" |
| Location           | Whitemans Br. of Anrons Fork of<br>Little Sandy                      | 6-5/8                  | 4922'   | 4922'   |
|                    |  | 2-3/8                  | 5067'4" | 5067'4" |
| Well No.           | 1 (GW-408) - Elev. 841.9 DF  | Liners Used            |         |         |
| District           | Elk - County Kanawha   | 3-1/2                  | 75'5"   | 75'5"   |
| Surface            | C. H. Rayhill, et al, Elkview W. Va.                                 |                        |         |         |
| Mineral            | C. H. Rayhill(agt.) et al & Glenn<br>Oil & Gas Co. Charleston, W.Va. | Liner around 2" anchor |         |         |
| Drilling Commenced | 2-3-38 - Completed 5-16-38   |                        |         |         |
| Date shot          | 5-17-38 - Depth 4974 $\frac{1}{2}$ -83 $\frac{1}{2}$ ; 5016-34       |                        |         |         |
| Volume             | 350,880  |                        |         |         |
| Rock Pressure      | 1750 lbs. 41 $\frac{1}{4}$ hrs.                                      |                        |         |         |
| Oil                | 1118 bbls. 1st 24 hrs.   |                        |         |         |
| Salt Water         | 1070, 1145-50  |                        |         |         |

*Formation Color* <sup>HOW</sup> *TOP* *Base Result*      *Formation Color* <sup>HOW</sup> *TOP* *Base Result*

|                  |      |      |     |  |                         |  |  |
|------------------|------|------|-----|--|-------------------------|--|--|
| Clay             | 0    | 20   |     | Gas 1051-55                                | Small show              |  |  |
| Sand             | 20   | 80   |     | Water 1070                                 | 300' in hole            |  |  |
| Slate            | 80   | 90   |     | Oil & Gas 1110-22                          | Est. 2 to 3 bbl. oil    |  |  |
| Sand             | 90   | 125  |     | gas  | blew down and exhausted |  |  |
| Slate            | 125  | 130  |     | Water 1145-50                              | HFJ                     |  |  |
| Red Rock         | 130  | 150  |     | Gas 1175                                   | Show                    |  |  |
| Slate            | 150  | 215  |     | (Gas flowed about every 2 hours)           |                         |  |  |
| Sand             | 215  | 240  |     | Gas 4160-65                                | Show                    |  |  |
| Slate            | 240  | 285  |     |  |                         |  |  |
| Sand             | 285  | 300  |     | 1st pay 4982                               |                         |  |  |
| Slate            | 300  | 360  |     | 2nd pay 5024                               |                         |  |  |
| Sand             | 360  | 400  |     | <u>CEMENT RECEIVED:</u>                    |                         |  |  |
| Slate            | 400  | 414  |     | 3/12/38 - Ran 85 sacks Alpha cement around |                         |  |  |
| Sand             | 414  | 425  |     | 8-5/8" mixed with 1 sack 3% solution       |                         |  |  |
| Slate            | 425  | 440  |     | Aquagel. 4 sacks Aquagel circulated ahead  |                         |  |  |
| Sand             | 440  | 480  |     | of cement. Pipe went back to bottom O.K.   |                         |  |  |
| Slate            | 480  | 530  |     | 5' cement left in hole.                    |                         |  |  |
| Sand             | 530  | 564  |     | (Dallas Holley, Cementer, Halliburton Oil  |                         |  |  |
| Slate            | 564  | 600  |     | Well Cementing Company)                    |                         |  |  |
| Sand             | 600  | 682  |     | 5/2/38 - Ran 25 sacks Alpha cement         |                         |  |  |
| Slate            | 682  | 715  |     | 6-5/8" casing. 9' spacer on bottom.        |                         |  |  |
| Sand             | 715  | 815  |     | 35' hard cement in pipe.                   |                         |  |  |
| Slate            | 815  | 940  |     | (Dallas Holley, Cementer, Halliburton Oil  |                         |  |  |
| Sand             | 940  | 970  |     | Well Cementing Company)                    |                         |  |  |
| Slate            | 970  | 1010 |     |  |                         |  |  |
| Salt Sand        | 1010 | 1415 |     |  |                         |  |  |
| Slate            | 1415 | 1425 |     |  |                         |  |  |
| Sand             | 1425 | 1488 |     |  |                         |  |  |
| Slate            | 1488 | 1506 |     |  |                         |  |  |
| Little Lime      | 1506 | 1530 |     |  |                         |  |  |
| Pencil Cave      | 1530 | 1535 | SLM |  |                         |  |  |
| Big Lime         | 1535 | 1678 |     |  |                         |  |  |
| Injun Sand       | 1678 | 1703 |     |  |                         |  |  |
| Slate & Shells   | 1703 | 3000 |     |  |                         |  |  |
| White Slate      | 3000 | 3750 |     |  |                         |  |  |
| Brown Shale      | 3750 | 3880 |     |  |                         |  |  |
| White Slate      | 3880 | 4495 |     |  |                         |  |  |
| Brown Shale      | 4495 | 4753 |     |  |                         |  |  |
| White Slate      | 4753 | 4795 |     |  |                         |  |  |
| Black Shale      | 4795 | 4865 | SLM |  |                         |  |  |
| Corniferous Lime | 4865 | 4969 | "   |  |                         |  |  |
| Oriskany Sand    | 4969 | 5007 |     |  |                         |  |  |
| Lime Break       | 5007 | 5018 |     |  |                         |  |  |
| Oriskany Sand    | 5018 | 5036 |     |  |                         |  |  |
| Black Lime       | 5036 | 5049 | SLM |  |                         |  |  |
| Total Depth      |      | 5049 |     |  |                         |  |  |