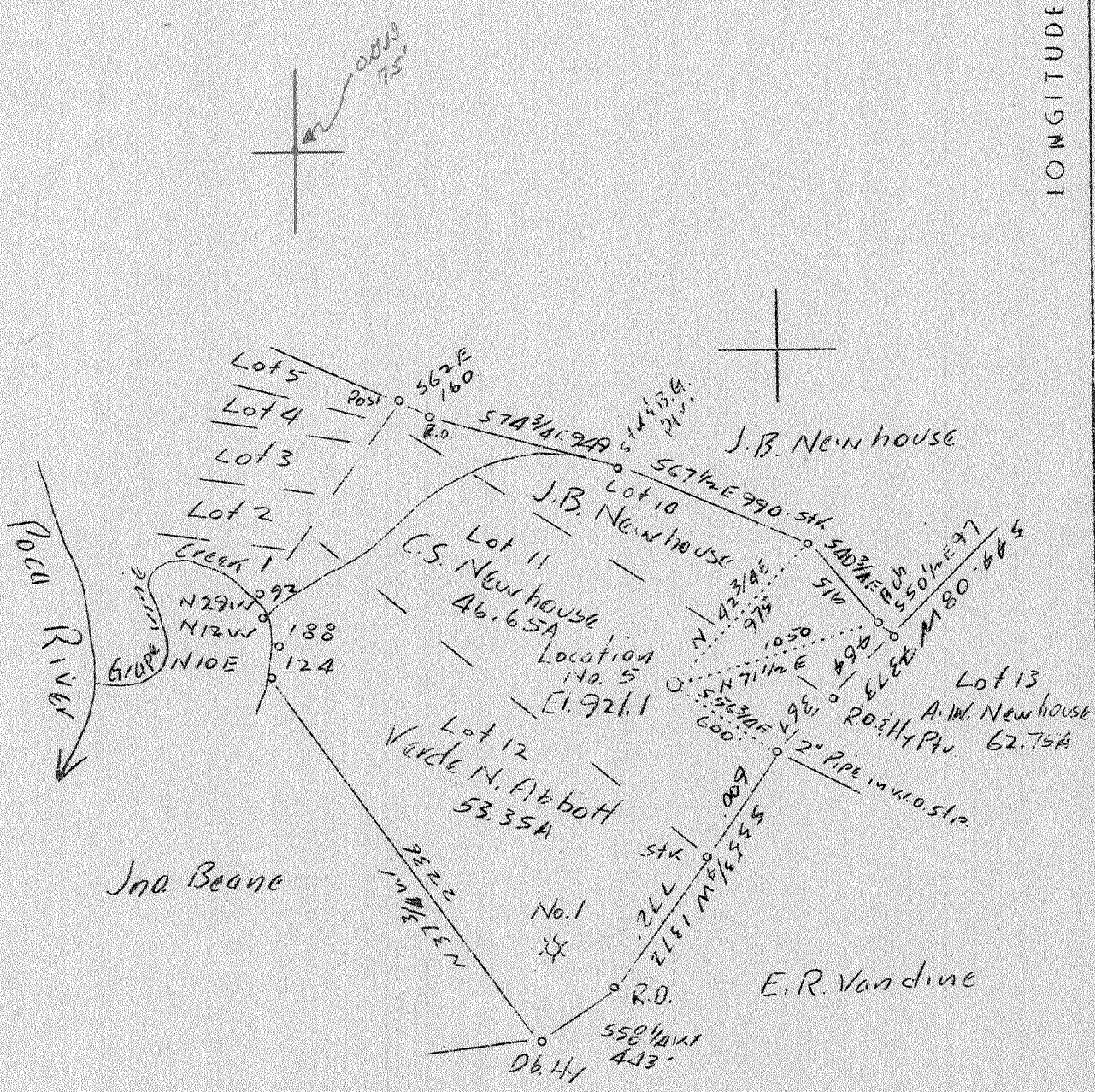


LATITUDE 38° 35'

LONGITUDE 81° 35'

$\frac{00008 \ 75' 600}{38^{\circ} 32' 30'' \ .935 \ 3.815}$
 $\frac{81^{\circ} 35' \ 1.8300 \ 1.8300}{}$



1.91 W
 3.71 S

| | | |
|-----------------------------|-----------------------------------|---|
| Company | South Penn Oil Co. | STATE OF WEST VIRGINIA |
| Address | 411 Seventh Ave., Pittsburgh, Pa. | Department of Mines |
| Farm | T.H. Newhouse | OIL AND GAS DIVISION |
| Tract | Acres 500 Lease No. 61410 | CHARLESTON |
| Well (Farm) No. | 5 Serial No. | WELL LOCATION MAP |
| Quadrangle | Kema <u>50</u> | File No. <u>KAN-518D</u> |
| County | Kanawha | + Denotes location of well on United States Topographic Maps, scale 1 to 62,500, latitude and longitude lines being represented by border lines as shown. |
| District | Poca | |
| Engineer | E.C. Tabler | — Denotes one inch spaces on border line of original tracing. |
| Engineer's Registration No. | | |
| File No. | Drawing No. | |
| Date | Feb. 15, 1938 Scale 1"-800' | |

WEST VIRGINIA DEPARTMENT OF MINES

OIL & GAS DIVISION

WELL RECORD

Permit No. Kan-518

Gas Well

Kenna Quad.

CASING & TUBING

| | | | |
|--------------------|---|------------------|---------------------|
| Company | South Penn Oil Co. | 16 | 21'10" Pulled 6'4" |
| Address | 411-7th Ave., Pittsburgh, Pa. | 13-3/8 | 619' 3" " " 10'1" |
| Farm | T. H. Newhouse ACRES 500 | 10 | 1742' 9" " " 21'11" |
| Location | Poca River | 8-5/8 | 1960' |
| Well No. | 5 ELEV. 921.10' | 7 | 5022 |
| District | Poca County Kanawha | | |
| Surface | C. S. Newhouse, Sissonville, W. Va. | CASING CEMENTED: | |
| Mineral | W. H. Newhouse, et al | 8-5/8" | 1951' |
| Address | Sissonville, W. Va. | 7" | 4972' |
| Drilling commenced | March 19, 1938 | | |
| Drilling completed | July 14, 1938 | | |
| Shot | Not shot | | |
| Open Flow | 60/10ths Merc. in 7" | | |
| Volume | 14,188,000 c. f. - Rock Pres. 1465# 1 hr. | | |
| Salt Water | 1390' to 1410' | | |

Formation Color ^{Har} TOP Base Result Formation Color ^{Har} TOP Base Result

| | | | | | | | | | |
|----------------|--|------|------|--|------------------------|----------------------|--|-------|-----------|
| Surface | | | 21 | | Slate & Shells | | | 4155 | 4660 |
| Slate | | 21 | 95 | | Shale | | | 4660 | 4890 |
| Sand | | 95 | 108 | | Black Shale | | | 4890 | 4952 |
| Slate | | 108 | 240 | | Corniferous | | | 4952 | 5056 |
| Red Rock | | 240 | 253 | | Oriskany | | | 5056 | 5072 |
| Slate | | 253 | 270 | | | | | | |
| Red Rock | | 270 | 285 | | TOTAL DEPTH | | | | 5074 |
| Slate | | 285 | 320 | | | | | | |
| Red Rock | | 320 | 370 | | Water (Salt) 1390-1410 | | | | Hole Full |
| Slate | | 370 | 470 | | | | | | |
| Red Rock | | 470 | 480 | | | | | | |
| Lime Shells | | 480 | 630 | | Gas 4993 Ins. to test | | | | |
| Sand | | 630 | 690 | | | | | | |
| Slate | | 690 | 725 | | Gas 5057 Ins. to test | | | | |
| Sand | | 725 | 765 | | | | | | |
| Slate | | 765 | 785 | | Gas 5057-5063 | 6/10 M. 7" casing | | | |
| Lime | | 785 | 795 | | | (4,275,000 cu. ft.) | | | |
| Slate | | 795 | 820 | | Gas 5062-5067 | 25/10 M. 7" casing | | | |
| Lime | | 820 | 834 | | | (9,170,000 cu. ft.) | | | |
| Slate | | 834 | 905 | | Gas 5067-5072 | 60/10M. 7" casing | | | |
| Sand | | 905 | 935 | | | (14,188,000 cu. ft.) | | | |
| Slate | | 935 | 990 | | | | | | |
| Lime | | 990 | 1028 | | | | | | |
| Slate | | 1028 | 1100 | | PACKER RECORD | | | | |
| Lime | | 1100 | 1120 | | Steel Shoe | 10" | | 1728' | |
| Slate | | 1120 | 1130 | | do. | 8-5/8 | | 1951 | |
| Lime | | 1130 | 1165 | | do | 7 | | 4972 | |
| Slate | | 1165 | 1175 | | | | | | |
| Lime | | 1175 | 1185 | | | | | | |
| Slate | | 1185 | 1200 | | | | | | |
| Slate | | 1200 | 1225 | | | | | | |
| Lime & Shells | | 1225 | 1245 | | | | | | |
| Slate | | 1245 | 1265 | | | | | | |
| Lime | | 1265 | 1270 | | | | | | |
| Salt Sand | | 1270 | 1430 | | | | | | |
| Lime | | 1430 | 1460 | | | | | | |
| Salt Sand | | 1460 | 1683 | | | | | | |
| Little Lime | | 1683 | 1715 | | | | | | |
| Pencil Cave | | 1715 | 1718 | | | | | | |
| Big Lime | | 1718 | 1878 | | | | | | |
| Big Injun Sand | | 1878 | 1928 | | | | | | |
| Slate | | 1928 | 1945 | | | | | | |
| Lime | | 1945 | 1965 | | | | | | |
| Slate & Shells | | 1965 | 2317 | | | | | | |
| Brown Shale | | 2317 | 2325 | | | | | | |
| Berea Grit | | 2325 | 2331 | | | | | | |
| Slate & Shells | | 2331 | 2790 | | | | | | |
| White Slate | | 2790 | 3250 | | | | | | |
| Slate & Shells | | 3250 | 3535 | | | | | | |
| Shale | | 3535 | 3588 | | | | | | |
| Slate & Shells | | 3588 | 3826 | | | | | | |
| Shale | | 3826 | 4155 | | | | | | |

WEST VIRGINIA DEPARTMENT OF MINES
OIL & GAS DIVISION
W E L L R E C O R D

| | | |
|----------------------|--|-----------------|
| Permit No. Kan 518-D | | Gas Well |
| Company | South Penn Natural Gas Company | CASING & TUBING |
| Address | Union Trust Bldg., Parkersburg, W. Va. | |
| Farm | T.H. Newhouse Acres 500 | |
| Location | Poca River | |
| Well No. | 5 D.D. Elev. 921.10 | |
| District | Poca Kanawha County | |
| Surface | C.S. Newhouse, Sissonville, W. Va. | |
| Mineral | W.H. Newhouse et al, Sissonville, W. Va. | |
| Commenced | Jan. 28, 1942 | |
| Completed | Feb. 18, 1942 | |
| Date shot | Feb. 18, 1942 Depth 5124 to 5128 with 30 quarts. | |
| Flow | 104/10ths W in 4" | |
| Volume | 1,986,000 C.F. | |

DRILLED DEEPER

| | | |
|---------------------------|------------------------------|----------------------------|
| Old total depth | 5074 (S.L. 5073) | |
| Gas test before deepening | 16/10W 4" Opng. -----671,000 | |
| Oriskany | 5073 | 5113 |
| Black Shale - | 5113 | 5121 |
| Sand, Oriskany | 5121 | 5142 (Not drilled through) |
| | | Gas 5123-5125 |
| | | 104/10W 4" Opng. 1,986,000 |
| TOTAL DEPTH | 5142 | |
| TESTS: | 5127-5129 | 40/10 W 4" Opg. 1,087,000 |
| | 5129 | 34/10W 4" Opg. 978,000 |
| | 5134 | 36/10W 4" Opg. 1,007,000 |
| | 5137-5139 | 34/10W 4" Opg. 978,000 |
| | 5142 | 20/10W 4" Opg. 750,000 |