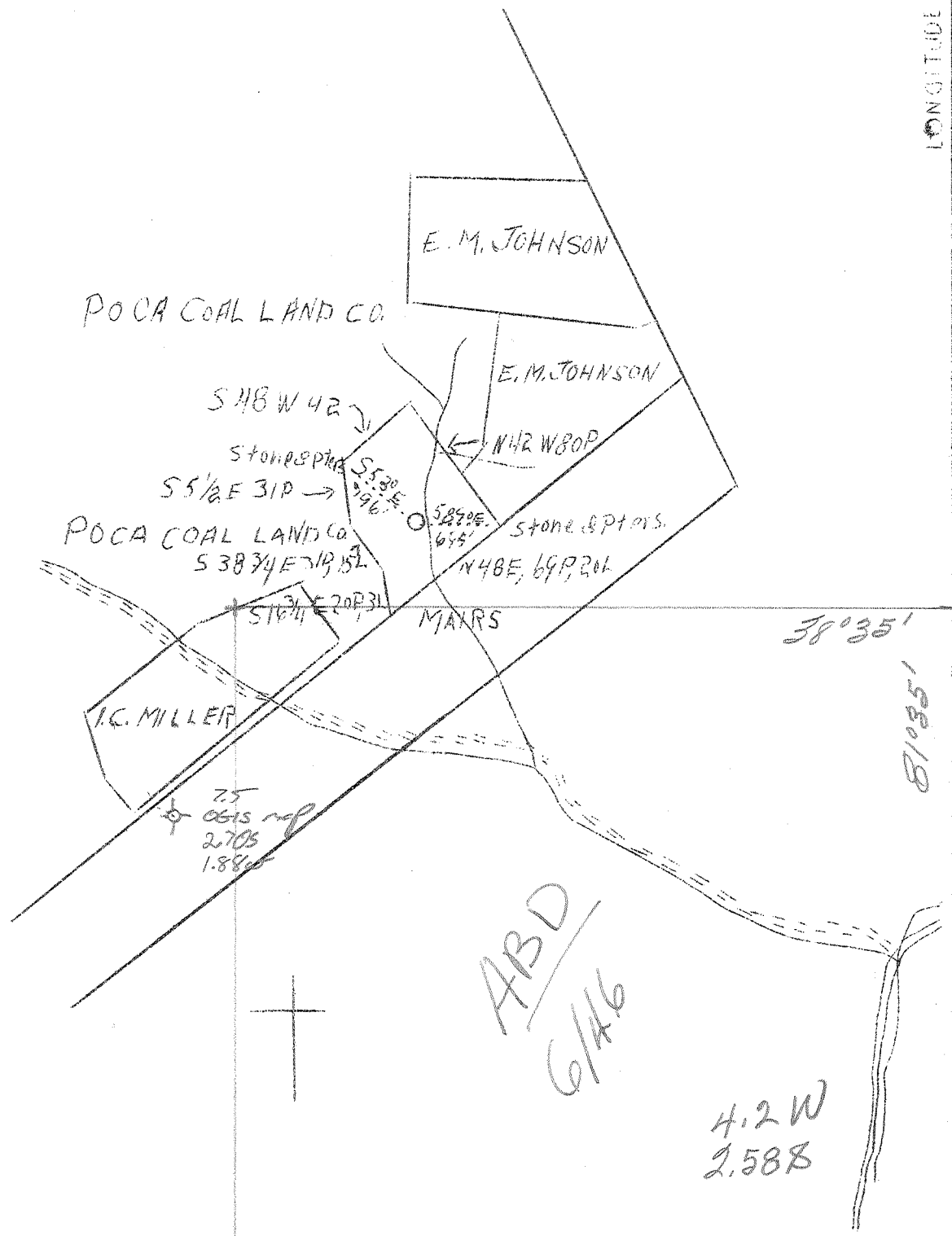


LATITUDE 38° <sup>35</sup>/<sub>40</sub>

LONGITUDE 81° 35' 30"



Company Godfrey L. Cabot, Inc.  
 Address 600 Union Bldg. Charleston, W.Va.  
 Farm Helen M. Hoge, et als (J.L. McLean)  
 Tract #366 Acres 28 1/2 Lease No. \_\_\_\_\_  
 Well (Farm) No. 1 Serial No. 918  
 Elevation (Spirit Level) 782.5  
 Quadrangle Kenna 50  
 County Kanawha District Poca  
 Engineer O.L. Fitz Randolph  
 Engineer's Registration No. 846  
 File No. \_\_\_\_\_ Drawing No. \_\_\_\_\_  
 Date March 23, 1938 Scale 1"-1320'

STATE OF WEST VIRGINIA  
 Department of Mines  
 OIL AND GAS DIVISION  
 CHARLESTON

WELL LOCATION MAP  
 File No. Kan-530-D

Denotes location of well on United States Topographic Maps, scale 1 to 62,500, latitude and longitude lines being represented by border lines as shown.

Denotes one inch spaces on border line of original tracing.

WEST VIRGINIA DEPARTMENT OF MINES

OIL & GAS DIVISION

W E L L R E C O R D

Permit No. Kan-58C

Gas well

Kenna S. E. Quad.

CASING & TUBING

Company	Godfrey L. Cabot, Inc.,	13-3/8	590	590
Address	Charleston, W. Va.	10-3/4	1749	
Farm	J. L. McLean (Helen M. Home etal)	8-5/8	1991	
Acres	- Well No. 1 ELEV. 782.5	7	4963	4963
District	Poca - Kanawha County	2	5041	5041
Surface & Mineral	-			
Drilling commenced	Dec. 12, 1938	No casing shoe used		
Drilling completed	March 21, 1939	no aquagel		
Shot	Not shot	Casing shoe 1600# aquagel		
Open Flow	20/10ths Merc. in 6-5/8" 20#	"	"	1600 "
	After drilling at 5038	"	"	6200 "
Volume	6,363,000 c.f.	20 bags of cement		
Rock Pressure	1425 lbs. 24 hrs. Oriskany	cement in 7"OD Csg. 10'		
Salt Water	1377	2x7" Otis style tubing		
" "	1914 l blr. per hr.	perforation on bottom		
" "	1943 Hole full			

Formation Color <sup>Hgr</sup> TOP Base Result				Formation Color <sup>Hgr</sup> TOP Base Result			
Clay	red	0	22	Brown Shale		3922	4147
Rock	red	22	70	White Slate		4147	4551
Slate	blue	70	106	Brown Shale		4551	4844
Rock	red	106	170	Black Shale		4844	4901
Sand		170	184	Corniferous Lime		4901	5009
Slate	blue	184	193	Oriskany Sand		5009	5041
Rock	red	193	255				
Slate	red	255	266	Gas 1827	Light show	-	exhausted
Rock	red	266	426	" 2355	Light show	-	exhausted
Slate	dark	426	453	" 5012	1" Merc. in 2"		
Rock	red	453	485	" 5012	.9" Merc. in 2"		after blowing
Lime		485	510	" 5014	2" Water in 6-5/8"		after drilling
Rock	red	510	534	" 5015	7.3 "	"	"
Sand		534	551	" 5018	1.1 Merc.	"	"
Rock	red	551	571	" 5020	1.6 "	"	"
Sand	wh	581	630	" 5021	1.4 "	"	"
Slate	wh	630	635	" 5023	1.4 "	"	"
Rock	red	635	643	" 5024	1.4" Merc. in 6-5/8"		out
Slate	wh	643	671	" 5026	1.3" "	"	"
Sand		671	716	" 5027	1.4" "	"	blowing
Slate	blue	716	728	" 5031	1.3" "	"	tools
Sand		728	760	" 5032	1.3" "	"	"
Slate	wh	760	896	" 5034	1.3" "	"	"
Slate	blk	896	911	" 5035	1.7" "	"	drilling
Slate		970	1062	" 5038	2' "	"	"
Sand		1062	1075	" 5039	1.6" "	"	"
Slate		1075	1183	" 5041	1.4" "	"	tools out
Slate	wh	1183	1258				
Sand	drk	1258	1293	Oriskany 1st pay	5011 to 5020		5,700 MCF
Shale		1293	1307	" 2nd pay	5034 to 5038		6,363 MCF
Sand		1307	1325				
Slate & Shell		1325	1377				
Salt Sand		1377	1712	SW 1377			
Little Lime		1712	1743	SLM 1749			
Pencil Cave		1743	1749				
Big Lime		1749	1884				
Keener Sand		1884	1906				
Slate		1906	1909	SW 1914			
Injun Sand		1909	1948	SW 1943			
Slate		1948	1986				
Lime	blk	1986	2001	SLM 1991			
Slate		2001	2034				
Lime	blk	2034	2070				
Slate & Shell		2070	2341				
Brown Slate		2341	2360				
Slate & Shell		2360	3675				
Lime		3675	3710				
White Slate		3710	3922				