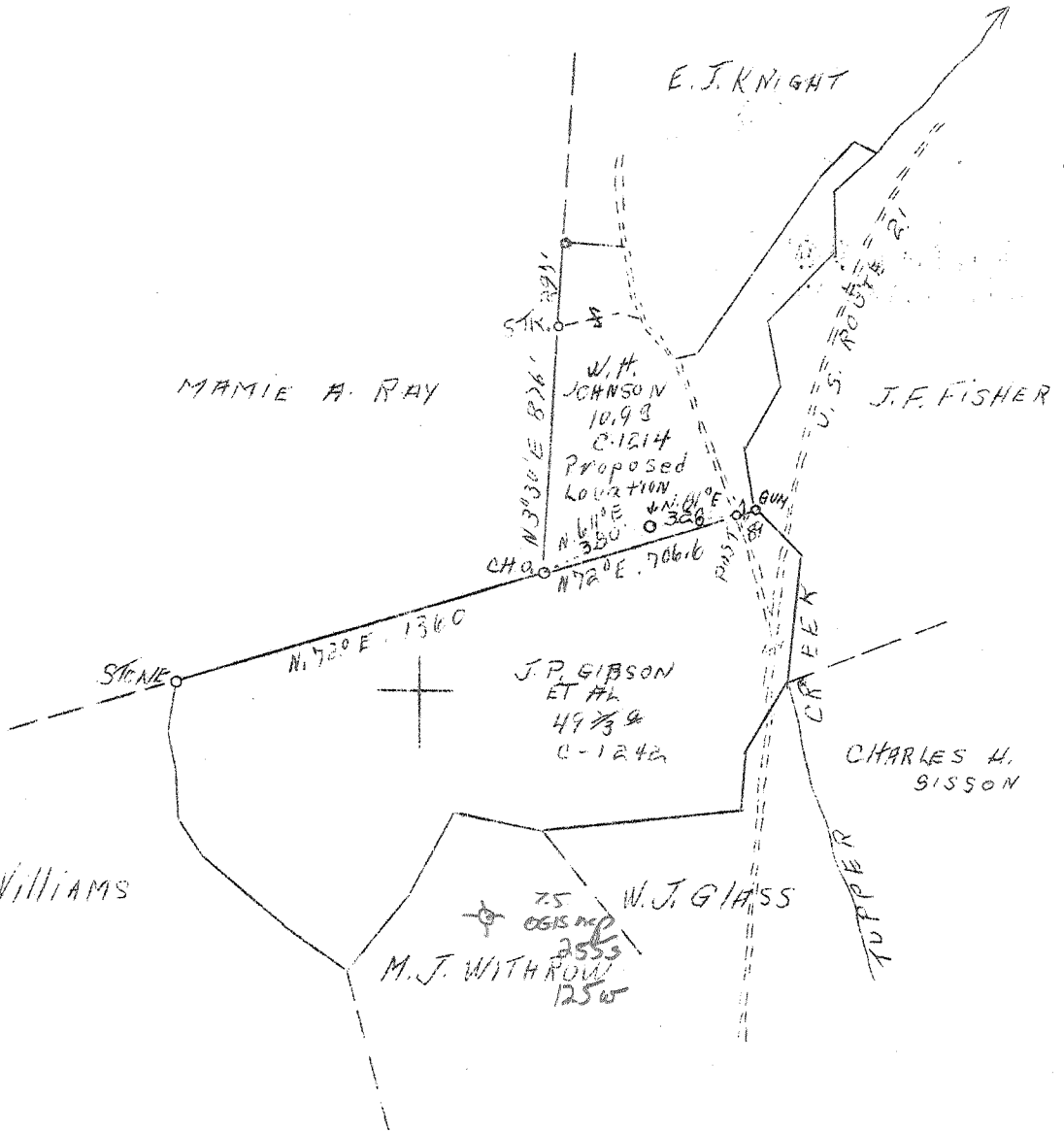


1 2 3

LATITUDE 38° 35'

LONGITUDE 81° 35'



5.5 S
4.6 W

Company	Columbian Carbon Co.
Address	Box 1240, Charleston, W.Va.
Farm	W.H. Johnson, J.P. Gibson et al
Tract	Acres 10.9 C-1214
Well No. (Farm)	1 Serial No. C-1242
Elevation (Spirit Level)	716
Quadrangle	Kenna S.C.
County	Kanawha District Poca
Engineer	James N. Sell
Engineer's Registration No.	772
File No.	Drawing No.
Date	March 21, 1938 Scale 1"=660'

STATE OF WEST VIRGINIA
Department of Mines
OIL AND GAS DIVISION
CHARLESTON

WELL LOCATION MAP

File No. Kan-532-D

Denotes location of well on United States Topographic Maps, scale 1 to 62,500, latitude and longitude lines being represented by border lines as shown.

Denotes one inch spaces on border line of original tracing.

WEST VIRGINIA DEPARTMENT OF MINES
OIL & GAS DIVISION

WELL RECORD

Permit No. Kan-532

Gas Well

Kenna S. W. Quad.

CASING & TUBING

Company Columbian Carbon Co.
 Address Box 1240, Charleston, W. Va.
 Farm Johnson-Gibson, et al ACRES 10.9 & 49-2/3
 Location Toppers Creek
 Well No. 1 (G-412) ELEV. 719.7 DF
 District Pocahontas County Kanawha
 Surface Elaine Melton Fabor, Sissonsville, W. Va.
 10.9 A. & W. H. Johnson 49-2/3
 Mineral Johnson, Gibson, et al, Sissonsville, W. Va.
 Drilling commenced 4-27-38 - completed 7-29-38
 Date shot 7-29-38 - Depth 4798 $\frac{1}{2}$ -4840
 Volume 24,658,200 c.f.
 Rock Pressure 1700 lbs. 24 hrs.
 Salt Water 1105' 2 blrs per hr. 1140-70 HFW

Size	Used	Left in
14"	41'10"	41'10"
10-3/4"	467' 6"	Pulled
8-5/8"	1751'11"	1751'11"
6-5/8"	4743'4"	4743'4"
2 Shut in on casing		

Formation	Color	HTF	TOP	Base	Result	Formation	Color	HTF	TOP	Base	Result
Red Rock			0	65		CEMENT RECORD:					
Sand			65	85		6/8/38 - Cemented 8-5/8" Casing with 115 sacks					
Lime			85	120		Alpha cement mixed with 2% Aquagel. 5 sacks					
Slate			120	165		Aquagel 4% mixture circulated ahead of cement.					
Sand			165	200		10' spacer run on bottom of top plug. Pipe					
Slate			200	225		went back to bottom O.K. 45' solid cement in					
Red Rock			225	245		pipe. John Stewart, Cementer - Halliburton					
Sand			245	340		Oil Well Cementing Company.					
Slate			340	460		7/15/38 - Cemented 6-5/8" Casing with 25 sacks					
Sand			460	497		Alpha cement. 10' spacer run under top plug.					
Slate			497	605		75' hard cement in pipe. Plug 20' off bottom.					
Sand			605	661		John Stewart, Cementer - Halliburton Oil Well					
Slate			661	805		Cementing Company					
Sand			805	830							
Slate			830	960							
Sand			960	975							
Slate			975	984							
Sand			984	1012							
Slate			1012	1030							
Salt Sand			1030	1440	Gas 1040-42 Show						
Slate			1440	1480	Water 1105-10 2 blrs. per hr.						
Little Lime			1480	1505	Water 1140-70 HFW						
Slate			1505	1509							
Lime Shell			1509	1513							
Pencil Cave			1513	1518							
Big Line			1518	1686							
Big Rajun			1686	1733							
Slate			1733	1738	SLM						
Lime	SLM		1738	1762							
Slate			1762	2125							
Shale			2125	2131							
Berea Sand			2131	2139							
Slate & Shells			2139	2675							
Slate			2675	3345							
Shale			3345	3420							
Lime Shells			3420	3580							
Slate			3580	3625							
Shale			3625	3640							
Slate			3640	3710							
Shale			3710	3945							
White Slate			3945	4405							
Shale			4405	4615							
White Slate			4615	4640							
Black Shale			4640	4694							
Corniferous Lime	SLM		4694	4793							
Oriskany Sand			4793	4871	Per Sand Sample examination						
Lime - full			4871	4878	Pay: 4798 $\frac{1}{2}$ -4801 $\frac{1}{2}$						
					4816 -4824						
TOTAL DEPTH				4878	SLM						

WEST VIRGINIA DEPARTMENT OF MINES
OIL & GAS DIVISION
W E L L R E C O R D

Permit No. Kan-532-D
- Quad.

Gas Well

Company Columbian Carbon Co.,
Address Box 1240, Charleston, W. Va.
Farm Johnson, Gibson, et al ACRES 10.9 &
Location Tuppers Creek 49-2/3
Well No. 1 (GW-412) ELEV. 719.7 DF
District Poca - Kanawha County
Surface Elaine Melton Fabor 10.9 A.
 W. H. Johnson 49-2/3 A.
Mineral Johnson, Gibson, et al, Sissonville,
Commenced Deepening June 2, 1940 W. Va.
Completed Deepening June 2, 1940
Shot Not shot
Volume 3,487,000 c.f.
Rock Pressure 820 lbs. 23 hrs.
Water -

CASING & TUBING
2-3/8 4897-1 4897-1
5 89-7 89-7

No packer

Oriskany Sand 4793 4871
Old Total Depth 4878 in Lime SLM

5/29/40 to 6/1/40 - cleaned out 50' of cavings

DRILLED DEEPER:

Lime 4878 4881 DLM
New Total Depth 4881 DLM

No deepened pay