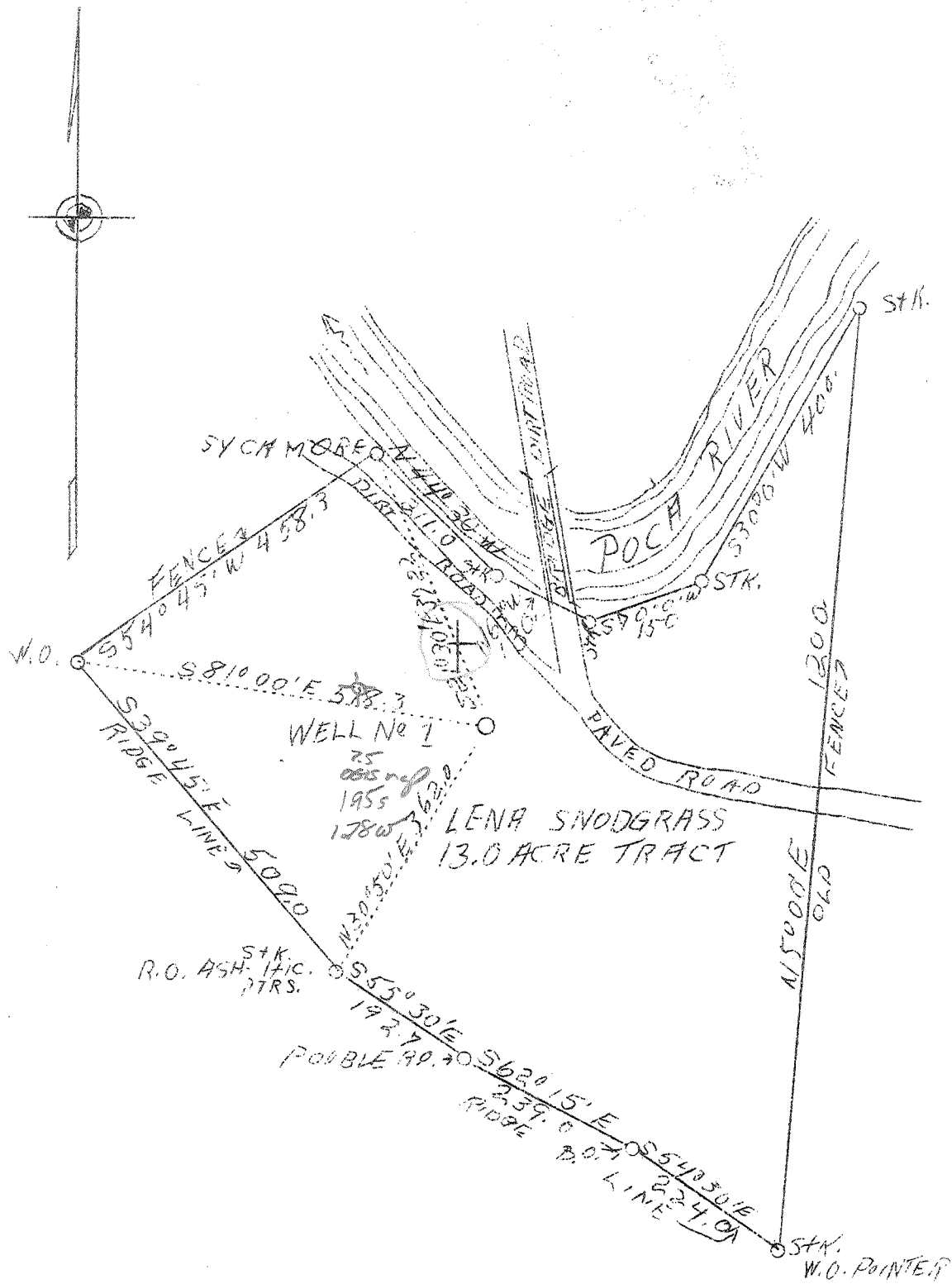


38° 32' 30"

LATITUDE 38° 35'

LONGITUDE 81° 35'

81° 37' 30"



Company Philip K. Harness
 Address 4301 Connecticut Ave., N.W.
Washington, D.C.
 Farm Lena Snodgrass
 Tract 1 Acres 13 Lease No.
 Well (Farm) No. 1 Serial No.
 Elevation (Spirit Level) 614-634
 Quadrangle Kenna S.C.
 County Kanawha District Poca
 Engineer C.B. Holsclaw
 Engineer's Registration No. 250
 File No. 1 Drawing No. 1
 Date April 2, 1938 Scale 1"=200'

STATE OF WEST VIRGINIA
 Department of Mines
 OIL AND GAS DIVISION
 CHARLESTON

WELL LOCATION MAP

File No. Kan-533-

D
 Denotes location of well on United States Topographic Maps, scale 1 to 62,500, latitude and longitude lines being represented by border lines as shown.

Denotes one inch spaces on border line of original tracing.

6-6-1938

WEST VIRGINIA DEPARTMENT OF MINES

OIL & GAS DIVISION

WELL RECORD

Permit No. Kan-533

Gas Well

Kenna Quad.

CASING & TUBING

Company	Philip K. Harness	14" O.D.	44'	44'
Address	Washington, D. C.	10-3/8 "	383	383
Farm	Lena Snodgrass Acres -	8-5/8 "	1756	1756
Location	Poca River	7 "	4662	4662
Well No.	One Elev. 634	2	4750	4750
District	Poca County Kanawha			
Surface & Mineral Address	Lena Snodgrass, et al Poca, W. Va.	<u>PACKER:</u> Kind - Size - Shoe Depth set - Shoe Perf. bottom - 6'		
Drilling commenced	May 7, 1938			
Drilling completed	July 5, 1938			
Shot record	-			
Open Flow	50/10ths Water in 6" I.D. 16/10ths Merc. in 6" I.D.	<u>CASING CEMENTED:</u> Size - 8-5/8 Feet -		
Rock Pressure	1700 lbs. 24 hrs.			
Fresh water	70° 2 bailers per hr.			
Salt Water	1020 - 1000			

6289mc
Vol XVI

Formation	Color	Har	TOP	Base	Result	Formation	Color	Har	TOP	Base	Result
Clay	red	s	0	60	F. water 70° - 2 bailers hr.						
Lime	grey	"	60	115							
Red Rock	red	"	115	129							
Slate	black	"	129	139							
Sand	grey	H	139	179							
Red Rock	red	s	179	266							
Slate	black	"	266	277							
Sand	grey	"	277	310							
Slate	blue	"	310	335							
Sand	grey	"	335	408							
Slate	black	"	408	537							
Red Lime	red	"	537	547							
Slate	black	"	547	557							
Sand	grey	h	557	620							
Slate Shells	grey	"	620	695							
Sand	grey	s	695	724							
Slate	grey	"	724	780							
Sand	grey	"	780	790							
Slate	grey	"	790	920							
Sand	grey	"	920	935							
Slate	grey	"	935	947							
Sand	grey	"	947	963							
Slate	grey	"	963	970	Salt Water						
Salt Sand	grey	h	970	1432	Water 1020 - 1/2 bailer hr.						
Slate	black	s	1432	1435	Water 1072 - hole full						
Little Lime	black	h	1435	1460							
Pencil cave	black	s	1460	1464							
Big Lime	grey	h	1464	1631							
Keener Sand	grey	"	1631	1655							
Big Injun	grey	"	1655	1703							
Slate	black	s	1703	1740							
Lime	black	h	1740	1760							
Slate Shells	black	s	1760	2083							
Lime	black	"	2083	2102							
Slate Shells	grey	"	2102	2910							
Slate	grey	s	2910	3090							
Slate Shells	grey	"	3090	3300							
Brown Shale	brown	"	3300	3395							
Slate Shells	grey	"	3395	3564							
Brown Shale	brown	"	3564	3869							
Slate	white	"	3869	4360							
Brown Shale	brown	"	4360	4640							
Corn Lime	grey	h	4640	4743							
Oriskany S.	white	"	4743	4756	Gas 4744 30/10 W. 1"						
					" 4750 16/10 M. 6" I.D.						