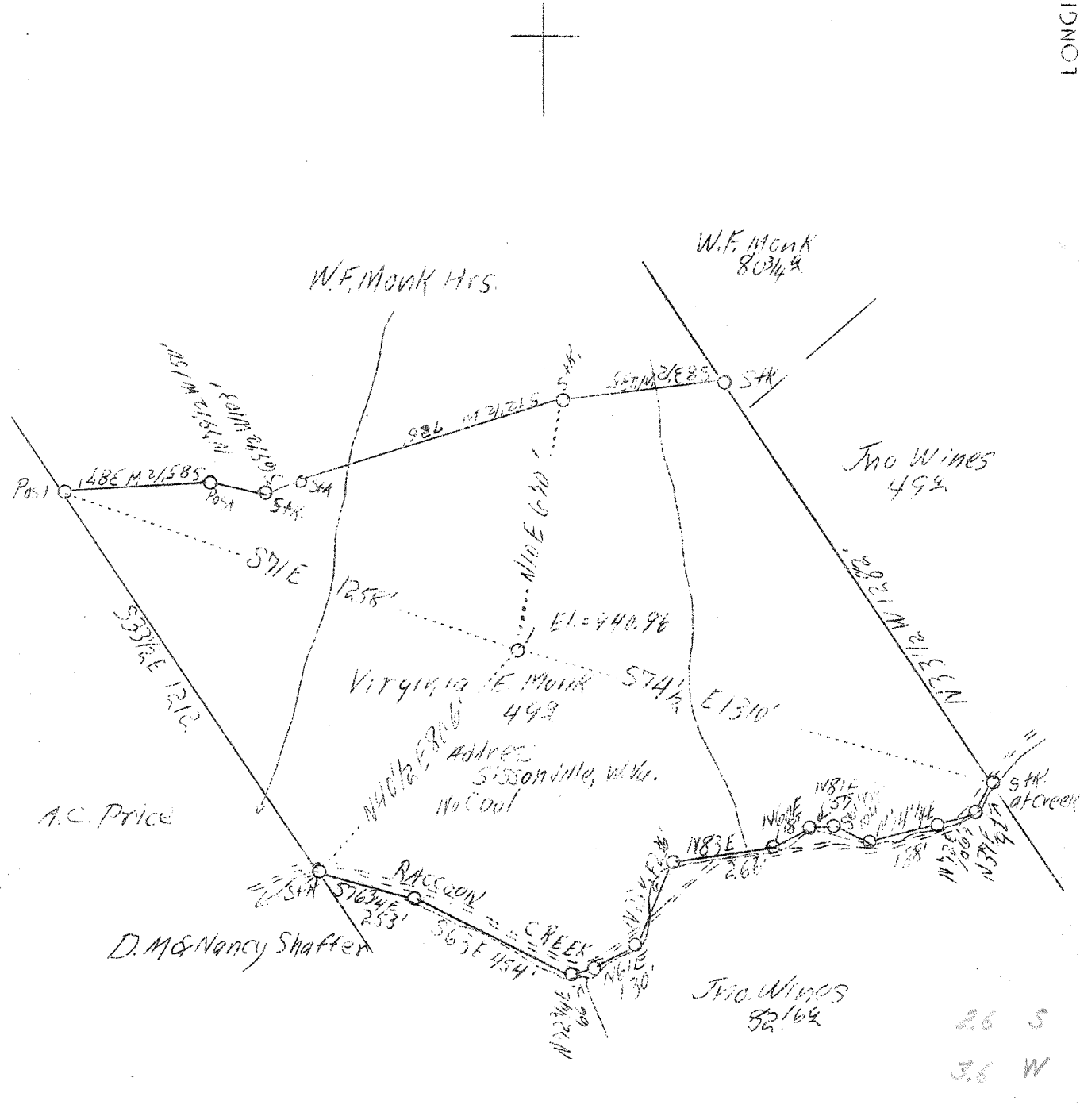


LATITUDE 38° 35'

LONGITUDE 81° 30'



Company	South Penn Oil Co.
Address	411 Seventh Ave., Pittsburgh, Pa.
Farm	Virginia E. Monk
Tract	Acres 49 Lease No. 79759
Well (Farm) No.	1 Serial No.
Quadrangle	Kenna SE
County	Kanawha
District	Poca
Engineer	E.C. Tabler
Engineer's Registration No.	
File No.	Drawing No.
Date	April 21, 1938 Scale 1"-400'

STATE OF WEST VIRGINIA
 Department of Mines
 OIL AND GAS DIVISION
 CHARLESTON

WELL LOCATION MAP

File No. Kan-536

Denotes location of well on United States Topographic Maps, scale 1 to 62,500, latitude and longitude lines being represented by border lines as shown.

Denotes one inch spaces on border line of original tracing.

Deer



WEST VIRGINIA DEPARTMENT OF MINES

OIL & GAS DIVISION

WELL RECORD

Permit No. Kan-536

Gas Well

Kenna Quad.

CASING & TUBING

Company	South Penn Oil Co.	Size	Used	Left in
Address	411-7th Ave. Pgh. Pa.	16	15'9"	Pulled 6'6"
Farm	Virginia E. Monk ACRES 49	13-3/8	560'4"	" 15'9"
Location	Raccoon Creek of Poca River	10	1726'7"	" 43'11"
Well No.	One ELEV. 940.96'	8-5/8	1935'8"	" 5'11"
District	Poca County Kanawha	7	5051'9"	
Surface	Va. E. Monk, Sissonville, W. Va.	<u>CASING CEMENTED</u>		
Mineral	Va. E. Monk, et al " "	Size	Feet	
Drilling commenced	May 4, 1938	8-5/8	1924	
Drilling completed	August 23, 1938	7	5004	
Shot	Not shot			
Open Flow	104/10ths Merc. in 7" OD 20# Csg.	PACKER - See Below		
Volume	18,685,144 c. f.			
Rock Pressure	1570 lbs. 24 hrs.			
Fresh Water	125' - Salt W. 1285-1342-1806'			

Formation Color ^{Hor} TOP Base Result Formation Color ^{Hor} TOP Base Result

Soil	0	16	Water	125	1 blr. per hr.		
Sand	16	25	" (Salt)	1285	3 blrs. per hr.		
Red Rock	25	45	" "	1342	Hole full		
Slate & Shell	45	110	Gas	1375	insf. to test		
Sand	110	160	Water	1806	1/2 blr. pr. hr.		
Slate & Shell	160	205	Oil	1806	Show		
Red Rock	205	270	Gas	1809	ins. to test		
Sand	270	300	"	4830	insf. to test		
Slate & Shell	300	410	"	5069	insf. to test		
Lime	410	435	Gas 5099-5102	12/10 M 2"	op. (608,000 cf)		
Slate & Lime	435	445	" 5102-5111	20/10 M 7"	Csg. (8186,000 cf)		
Red Rock	445	468	" 5111-5112	24/10 M 7"	Csg. (8953,000 cf)		
Slate & Lime	468	540	" 5112-5115	40/10 M 7"	Csg. (11527,000 cf)		
Lime	540	590	" 5115-5119	74/10 M 7"	Csg. (15893,000 cf)		
Sand	590	635	" 5119-5121	104/10 M 7"	Csg. (18685,144 cf)		
Lime	635	670	<u>PACKER RECORD</u>				
Sand	670	700	Steel Shoe	13-3/8	554'	5-10-38	
Slate	700	735	Do	10-3/4	1711'	6-11-38	
Sand	735	785	Do	8-5/8	1924'	6-17-38	
Slate	785	915	Do	7" OD	5004'	8-10-38	
Sand	915	960					
Slate & Shell	960	980					
Sand	980	1025					
Slate & Shell	1025	1255					
Salt Sand	1255	1633					
Slate	1633	1636					
Lime	1636	1681					
Slate	1681	1682					
Little Lime	1682	1700					
Pencil Cave	1700	1702					
Big Lime	1702	1853					
Big Inj.	1853	1890					
White Slate	1890	1920					
Lime Shells	1920	2015					
Slate & Shell	2015	2335					
Lime	2335	2360					
Slate & Shell	2360	2550					
Berea Shell	2550	2553					
Slate & Shells	2553	3520					
Lime Shells	3520	3910					
Slate & Shells	3910	3980					
Brown Shale	3980	4070					
Grey Shale	4070	4625					
Brown Shale	4625	4945					
Black Shale	4945	4984					
Corniferous	4984	5093					
Oriskany	5093	NOT DRILLED THRU					
Total Depth		5121					

Probable Berea horizon

?