

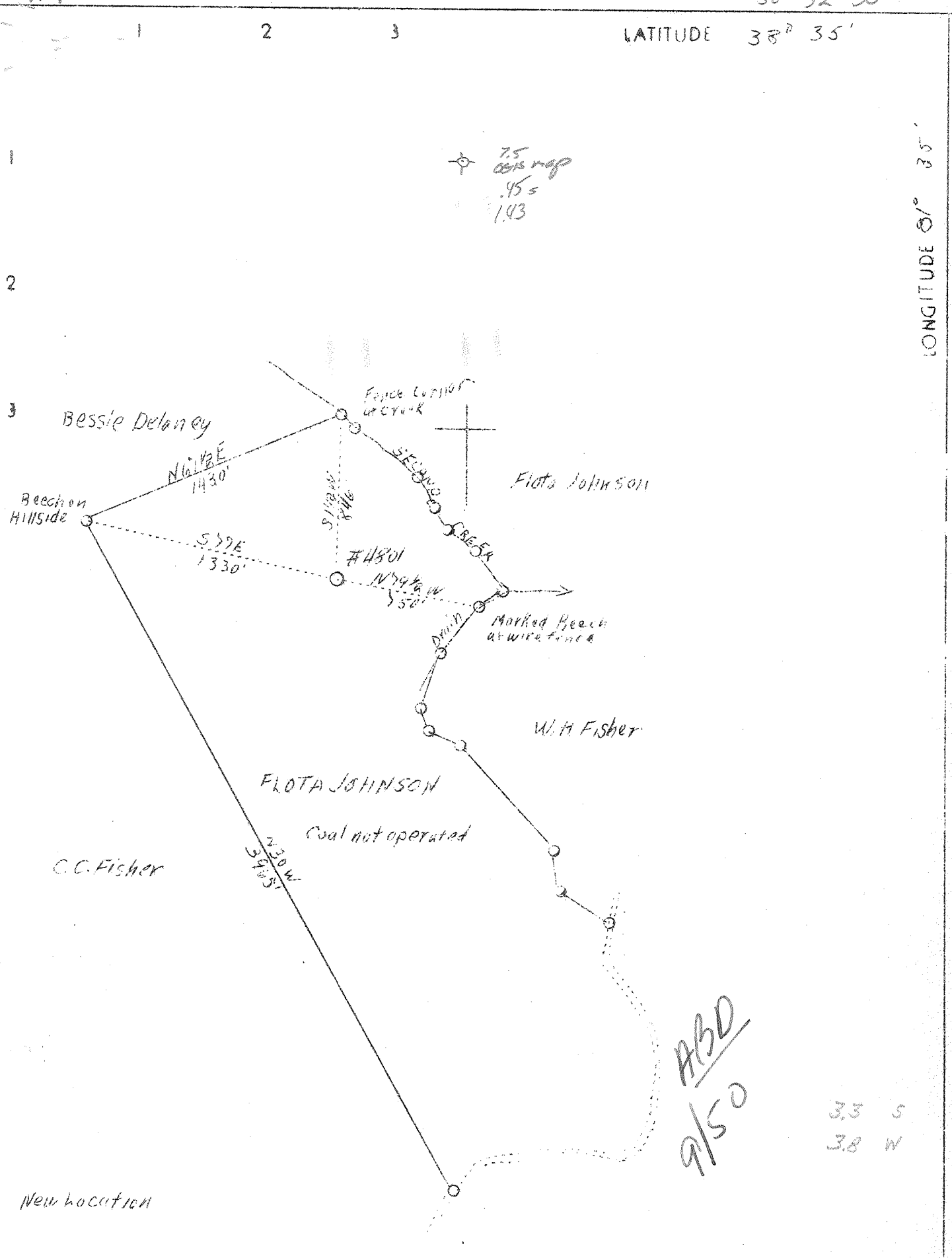
M

38° 32' 30"

LATITUDE 38° 35'

LONGITUDE 81° 35'

81° 37' 30"



ABD
9/50

3.3 S
3.8 W

Company United Fuel Gas Co.
 Address Charleston, W.Va.
 Farm Flota Johnson
 Tract Acres 123 Lease No. 40281
 Well (Farm) No. 1 Serial No. 4801
 Elevation (Spirit Level) 851'
 Quadrangle Kenna S.C.
 County Kanawha District Poca
 Engineer G.A. Cunningham
 Engineer's Registration No. 659
 File No. 60-71 Drawing No.
 Date May 9, 1938 Scale 1"=660'

STATE OF WEST VIRGINIA
 Department of Mines
 OIL AND GAS DIVISION
 CHARLESTON

WELL LOCATION MAP

File No. Kan-541

Denotes location of well on United States Topographic Maps, scale 1 to 62,500, latitude and longitude lines being represented by border lines as shown.

Denotes one inch spaces on border line of original tracing.

WEST VIRGINIA DEPARTMENT OF MINES

OIL & GAS DIVISION

WELL RECORD

Permit No. Kan-541

Gas Well

Kenna Quad.

CASING & TUBING

Company	United Fuel Gas Co.	10	665	665
Address	Charleston, W. Va.	8-5/8	1975	1975
Farm	Flora Johnson ACRES 123	7	4940	4940
Location	Second Creek			
Well No.	4801 ELEV. 855.39			
District	Poca - Kanawha County			
Surface & Mineral	Flora Johnson, Charleston, W. Va.			
Drilling commenced	June 25, 1938			
Drilling completed	Sept. 29, 1938			
Shot	Not shot			
Open Flow	60/10ths Merc. in 7 inch			
Volume	12,091,000 c.f.			
Rock Pressure	1535 lbs. 48 hrs.			
Water	-			

Formation	Color	Har	TOP	Base	Result	Formation	Color	Har	TOP	Base	Result
-----------	-------	-----	-----	------	--------	-----------	-------	-----	-----	------	--------

Formation	Color	Har	TOP	Base	Result	Formation	Color	Har	TOP	Base	Result
Red Rock			95	95							
Slate			95	130							
Red Rock			130	215							
Slate			215	330							
Sand			330	370							
Red Rock			370	490							
Sand			490	620							
Slate			620	685							
Sand			685	775							
Slate			775	875							
Sand			875	937							
Slate			937	947							
Sand			947	970							
Slate			970	1120							
Sand			1120	1155							
Slate			1155	1265							
Sand			1265	1285							
Slate			1285	1305							
Salt Sand			1305	1663							
Slate			1663	1665							
Maxon			1665	1720							
Slate			1720	1730							
Little Lime			1730	1750							
Slate			1750	1760							
Big Lime			1760	1895							
Injun			1895	1955							
Slate			1955	1971							
Lime Shell			1971	1990							
Slate			1990	2380							
Berea Grit			2380	2395	Gas 2385'						
Slate & Shells			2395	3585							
Brown Shale			3585	3625							
Lime - Hard			3625	3730							
Slate Shells			3730	3880							
Brown Shale			3880	4010							
Slate & Shells			4010	4020							
Shale, Brown			4020	4185							
Slate			4185	4625							
Brown Shale			4625	4840							
Slate (white)			4840	4875							
Shale (Black)			4875	4924							
Corniferous Lime			4924	5032							
Oriskany Sand			5032								
Total Depth			5051		Cable Meas.						