

Latitude 38° 35'

Longitude 81° 35'

New Location...   
 Drill Deeper...   
 Abandonment...  issued 10-27-71

Company Cities Service Oil Co.  
of UMBIAN CARBON CO.  
 Address Box 1210 CHARLESTON, W. VA., 25323  
 Farm LENA CASTO  
 Tract \_\_\_\_\_ Acres 3 3/4 Lease No. C-1162  
 Well (Farm) No. ONE Serial No. GW-415  
 Elevation (Spirit Level) 993.17  
 Quadrangle KENNA-8-SE  
 County KANAWHA District POCA  
 Engineer Cl. Branham  
 Engineer's Registration No. 683  
 File No. \_\_\_\_\_ Drawing No. \_\_\_\_\_  
 Date 5/11/38 Scale 1" = 400'

STATE OF WEST VIRGINIA  
 DEPARTMENT OF MINES  
 OIL AND GAS DIVISION  
 CHARLESTON

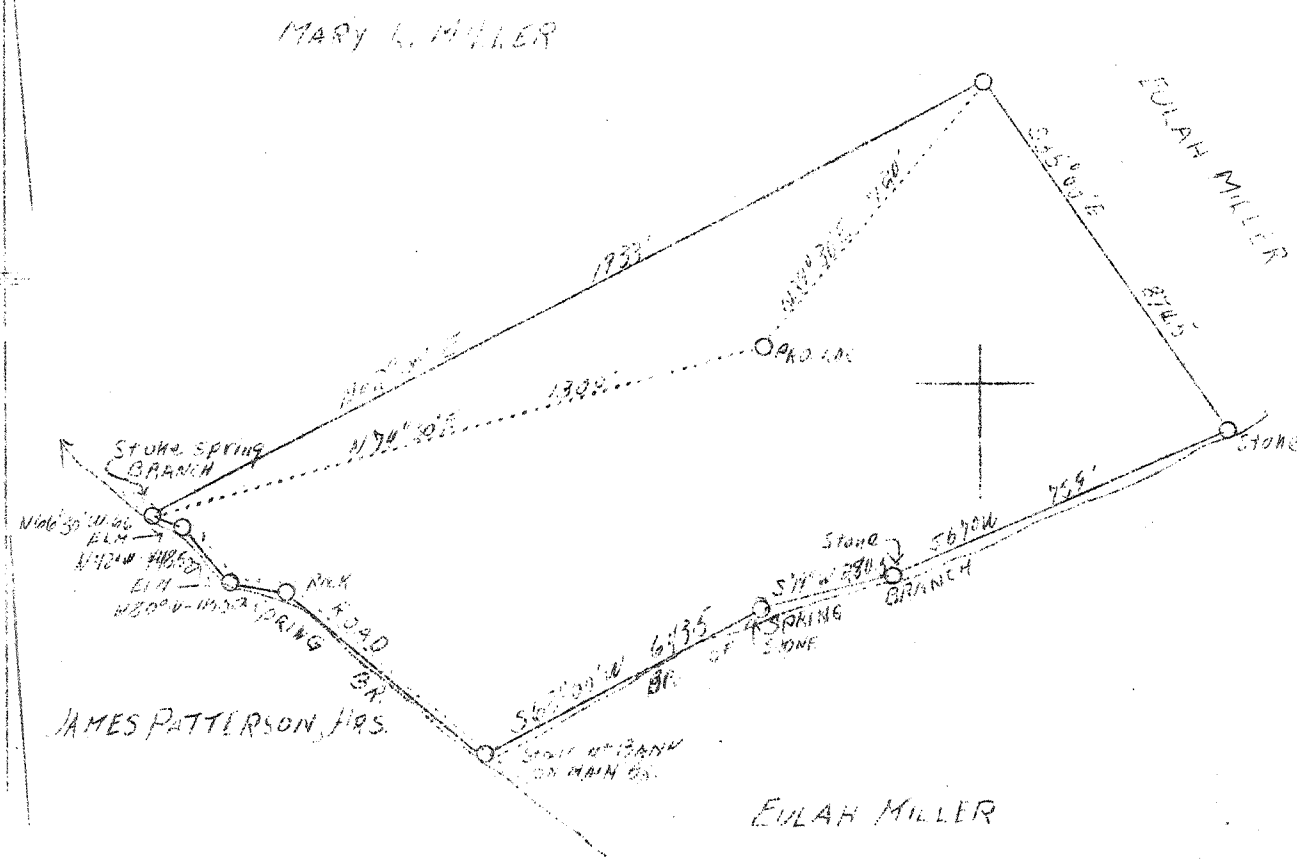
WELL LOCATION MAP  
 FILE NO. Kan-544-P

+ Denotes location of well on United States Topographic Maps, scale 1 to 62,500, latitude and longitude lines being represented by border lines as shown.  
 - Denotes one inch spaces on border line of original tracing.

LATITUDE 38° 35'

LONGITUDE 81° 35'

1  
2  
3



New Location

5.3 S  
5.26-S  
20 W  
1.99-W

Company	Columbian Carbon Co.
Address	Box 1240, Charleston, W.Va.
Farm	Lena Casto
Tract	Acres $31\frac{3}{4}$ Lease No. C-1162
Well (Farm) No.	1 Serial No. GW-
Elevation (Spirit Level)	993.17
Quadrangle	Kenna 30
County	Kamwaha District Poca
Engineer	C.A. Branham
Engineer's Registration No.	683
File No.	Drawing No.
Date	5/11/38 Scale 1"=400'

STATE OF WEST VIRGINIA  
Department of Mines  
OIL AND GAS DIVISION  
CHARLESTON

WELL LOCATION MAP  
File No. Mon-544 D

Denotes location of well on United States Topographic Maps, scale 1 to 62,500, latitude and longitude lines being represented by border lines as shown.

Denotes one inch spaces on border line of original tracing.

WEST VIRGINIA DEPARTMENT OF MINES

GIL & GAS DIVISION

WELL RECORD

Permit No. Kan-544

Gas Well

Kenna Quad.

CASING & TUBING

Company	Columbian Carbon Co.	14	44-C	44-C
Address	Box 1240, Charleston, W. Va.	10-3/4	645-11	598-6
Farm	Lena Cisto ACRES 21-3/4	8-5/8	1982-10	1982-10
Location	Spring Br. Tupper's Creek	6-5/8	5005-11	5005-11
Well No.	1 (GW-415) ELEV. 997.1 DF			
District	Poca County Kanawha			
Surface	Tom Williams, et ux,			
Address	Magazine St., Charleston, W. Va.			
Mineral	Lena Cisto, et al, Charleston, W. Va.			
Drilling commenced	June 20, 1938			
Drilling completed	Sept. 14, 1938			
Date shot	Not shot			
Open Flow	-			
Volume	12,530,000 c.f.			
Rock Pressure	1500 lbs. 36 hrs.			
Fresh Water	90' 1/2-13" blr hr. 660' 2-10" blr hr. (Exhausted)			
Salt Water	1352' 5-10" blr. hr. 1375' HPW			

Formation	Color	Top	Base	Result	Formation	Color	Top	Base	Result
Sand		0	50		Brown Shale		2350	2356	
Slate & Shells		50	175		Berea Sand		2356	2359	
Sand		175	200		Slate & Shells		2359	3595	
Red Rock		200	263		Brown Shale		3595	3630	
Slate		263	272		Slate & Shells		3630	4010	
Sand		272	293		Brown Shale		4010	4200	
Red Rock		293	380		Slate & Shells		4200	4610	
Lime		380	410		Shale, Dark		4610	4700	
Slate & Shells		410	472		Brown Shale		4700	4880	
Red Rock		472	495		White Slate		4880	4910	
Sand		495	550		Dark Shale		4910	4970	SLM
Slate		550	562		Corniferous Lime	SLM	4970	5071	
Red Rock		562	590		Criskany Sand		5071	5092	
Lime		590	602		Total Depth			5092	
Sand		602	618						
Slate		618	625		Pay		5077-5092		
Sand		625	665		Oil		2285 Small show		
Slate & Shells		665	785		Gas		2340 Small show		
Sand		785	810						
Slate & Shells		810	825						
Sand		825	870						
Slate		870	890						
Sand		890	905						
Slate		905	970						
Sand		970	984						
Slate		984	1136						
Sand		1136	1157						
Slate		1157	1215						
Sand		1215	1244						
Slate		1244	1275						
1st Silt Sand		1275	1418						
Slate		1418	1427						
2nd Silt Sand		1427	1605						
Slate		1605	1615						
Sand		1615	1632						
Slate		1632	1646						
Maxton Sand		1646	1702						
Slate		1702	1714						
Little Lime		1714	1737						
Pencil Cave		1737	1746						
Lime Shell		1746	1749						
Pencil Cave		1749	1754						
Big Lime		1754	1902						
Big Injun		1902	1970						
Slate		1970	1975						
Lime Shell		1975	1968	SLM					
(SLM run at 1990' sand line measurement equal 1966' SLM. No corrections made in log above 1968' SLM)									
Slate & Shells	SLM	1968	2350						

CEMENT RECORD:

7/23/38 Ran 105 sacks Alpha cement mixed with 2% Aquagel solution. 5 sacks Aquagel run ahead of cement. 5' solid cement left in hole.  
(D. M. Holley, Cementer - Halliburton Oil Well Cementing Co.)

8/29/38 Cemented with 35 sacks Alpha cement. 10' spacer between plugs. 17' hard cement on bottom plug.  
(John Stewart, Cementer - Halliburton Oil Well Cementing Company)

475

WEST VIRGINIA DEPARTMENT OF MINES  
OIL & GAS DIVISION  
WELL RECORD

Permit No. Kan-544-D  
Quadrangle - Kenna 8 S.E.

Gas Well  
CASING & TUBING

Company	Columbian Carbon Co.	2-3/8 5119-10 5119-10
Address	Box 1240, Charleston, W. Va.	
Farm	Lena Casto ACRES 31-3/4	
Location	Spring Br. Tappers Creek	
Well No.	1 (GW-415) ELEV. 997.1 DF	
District	Poca - Kanawha County	
Surface	Tom Williams, et ux, Magazine St., Charleston, W.Va.	
Mineral	Lena Casto, etal, Charleston, W.Va.	
DRILLING DEEPER:		
Commenced	7/6/39	
Completed	7/13/39	
Shot	Not shot	
Volume	10,259,000 c.f.	
Rock Pressure	not taken - tubed into line	
Water		

*Formation Color* <sup>Hor</sup> *Top Base Result*      *Formation Color* <sup>Hor</sup> *Top Base Result*

Oriskany		5071							
DRILLED DEEPER RECORD									
Old Total Depth	5092'	DLM	=	5085'	SLM in	Oriskany Sand			
Oriskany		5085		5129					
NEW TOTAL DEPTH				5129					
				415					

WEST VIRGINIA DEPARTMENT OF MINES  
OIL & GAS DIVISION  
WELL RECORD

Permit No. Kan-544-D  
- Quad.

Gas Well

CASING & TUBING

2-3/8 5183-4 5183-4

No Pecker

Company                   Columbian Carbon Co.  
Address                   Box 1240, Charleston, W. Va.  
Farm                      Lena Casto   ACRES 31-3/4  
Location                  Spring Br. Tappers Creek  
Well No.                  1 (GW-415)   ELEV. 997.1 DT  
District                  Poca - Kanawha County  
Surface                  Tom Williams, et ux,  
Address                  Magazine St., Charleston, W. Va.  
Mineral                  Lena Casto, et al, Charleston, W. Va.  
Deepening Commenced   June 13, 1940  
Deepening Completed   June 16, 1940  
Shot                      Not shot  
Open Flow                -  
Volume                   4,927,000 c.f.  
Rock Pressure           600 lbs. 39 hrs.  
Water                    -

Oriskany                 5071

DRILLED DEEPER RECORD

Old Total Depth        5129 in Oriskany Sand

Oriskany                5129   5145  
Black Line *Held*        5145   5156   No deepened Pay

New Total Depth        5156

485