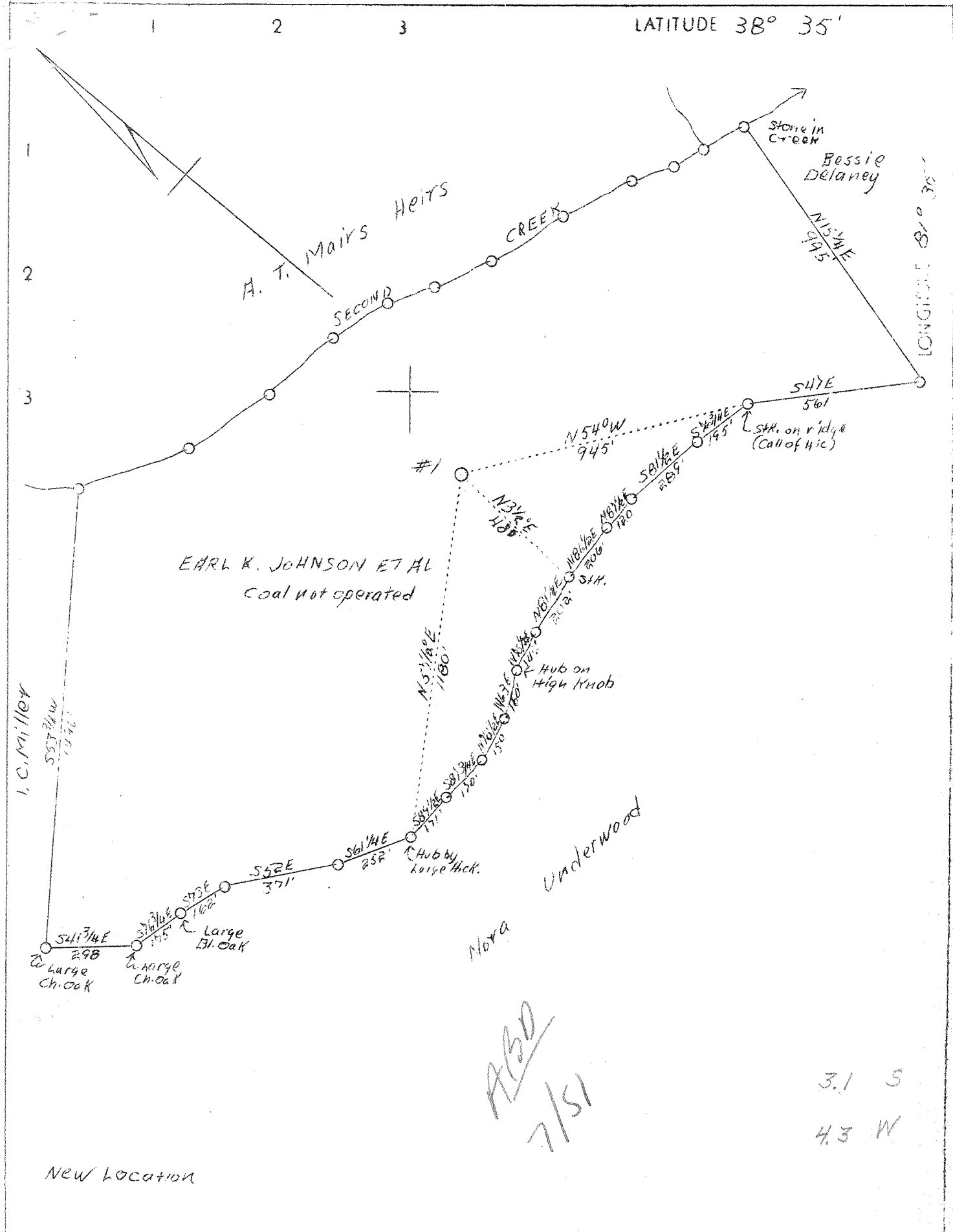


M



Company	Mullins Gas Co.	STATE OF WEST VIRGINIA
Address	Charleston, W. Va.	Department of Mines
Farm	Earl K. Johnson, et al	OIL & GAS DIVISION
Acres	80	Charleston
Well (Farm) No.	1	WELL LOCATION MAP
Elevation	-	File No. <u>Kan-530</u>
Quadrangle	Kenna S.C.	
County	Kanawha	X Denotes location of well on U. S. Topographic Maps, scale 1 to 62,500, latitude and longitude lines being represented by border lines as shown.
District	Poca	- Denotes one inch spaces on border line of original tracing.
Engineer	G. A. Cunningham	
Eng. Reg. No.	659	
File No.	60-71	
Date	June 10, 1938	
Scale	1" = 400'	

WEST VIRGINIA DEPARTMENT OF MINES

OIL & GAS DIVISION

WELL RECORD

Permit No. Kan-550

Gas Well

Kenna Quad.

CASING & TUBING

Company	Mullins Gas Co.	10	706
Address	507 Kanawha Bank & Trust Bldg., Charleston, W. Va.	8-1/4	1962
Farm	Earl K. Johnson, et al ACRES 80	7 OD	4923
Location	Second Creek of Poca	2	5026
Well No.	One ELEV. 827	Facker - Parmaco	
District	Poca County Kanawha	Size - 8-5/8x10	
Surface & Mineral	E. K. Johnson et al, Sissonville, W.Va.	Depth set - 5018 1/2	
Drilling commenced	July 12, 1938	Perf. bot. 5026	
Drilling completed	Oct. 15, 1938		
Open Flow	27/10ths Merc in 7"OD 24-30#	Casing Cemented:	
Volume	- 812 Mcf	Size feet	
Rock Pressure	1550 lbs.	7"OD	4923
Slat Water	1320 & 1380 feet		

Formation	Color	Top	Base	Result	Formation	Color	Top	Base	Result
Clay		0	20		Slate Brown		4420	4490	
Slate		20	57		Lime		4490	4520	
Sand		57	84		Slate Brown		4520	4580	
Slate		84	112		Slate		4580	4610	
Red Rock		112	147		Brown Shale		4610	4914	
Slate		147	163		Corniferous		4914	5014	
Grey Lime		163	184		Top of Oriskany		5014	SLM 5002	
Slate		184	210		First Gas		5016		
Red Rock		210	245		Total Depth		5029		
Slate & Lime		245	280						
Red Rock		280	425						
Slate & Shells		425	509		Water 1320				two barrels per hour.
Red Rock		509	519		Water Sand 1380				Hole full.
Slate		519	597						
Lime		597	611						
Slate		611	672		Gas 2415				No test
Sand		672	712		" 3099-3100				No test
Slate & Shells		712	900		" 4435				
Sand		900	1010		" 4535				
Slate Lime Shells		1010	1212						
Slate Sandy Shells		1212	1310		Shale Gas 13/10 in 1"		38,000		
Salt Sand		1310	1672						
Slate		1672	1674						
Max. Sand		1674	1703						
Lime		1703	1719						
Slate		1719	1721						
Lime		1721	1732						
Red Rock		1732	1745						
Little Lime		1745	1764						
Pencil Cave		1764	1780						
Bis Lime		1780	1880						
White Slate		1880	1883						
Inj. Sand		1883	1948						
Slate		1948	1958						
Lime		1958	1992						
Slate Black		1992	1994						
Sandy Lime		1994	2085						
Slate Shells		2085	2365						
Lime Shells		2365	2580						
Slate		2580	2660						
Lime		2660	2790						
Slate		2790	3095						
Lime		3095	3180						
Slate		3180	4000						
Brown Shale		4000	4030						
Blue Slate Shells		4030	4260						
Lime		4260	4310						
Slate white		4310	4380						
Lime		4380	4420						