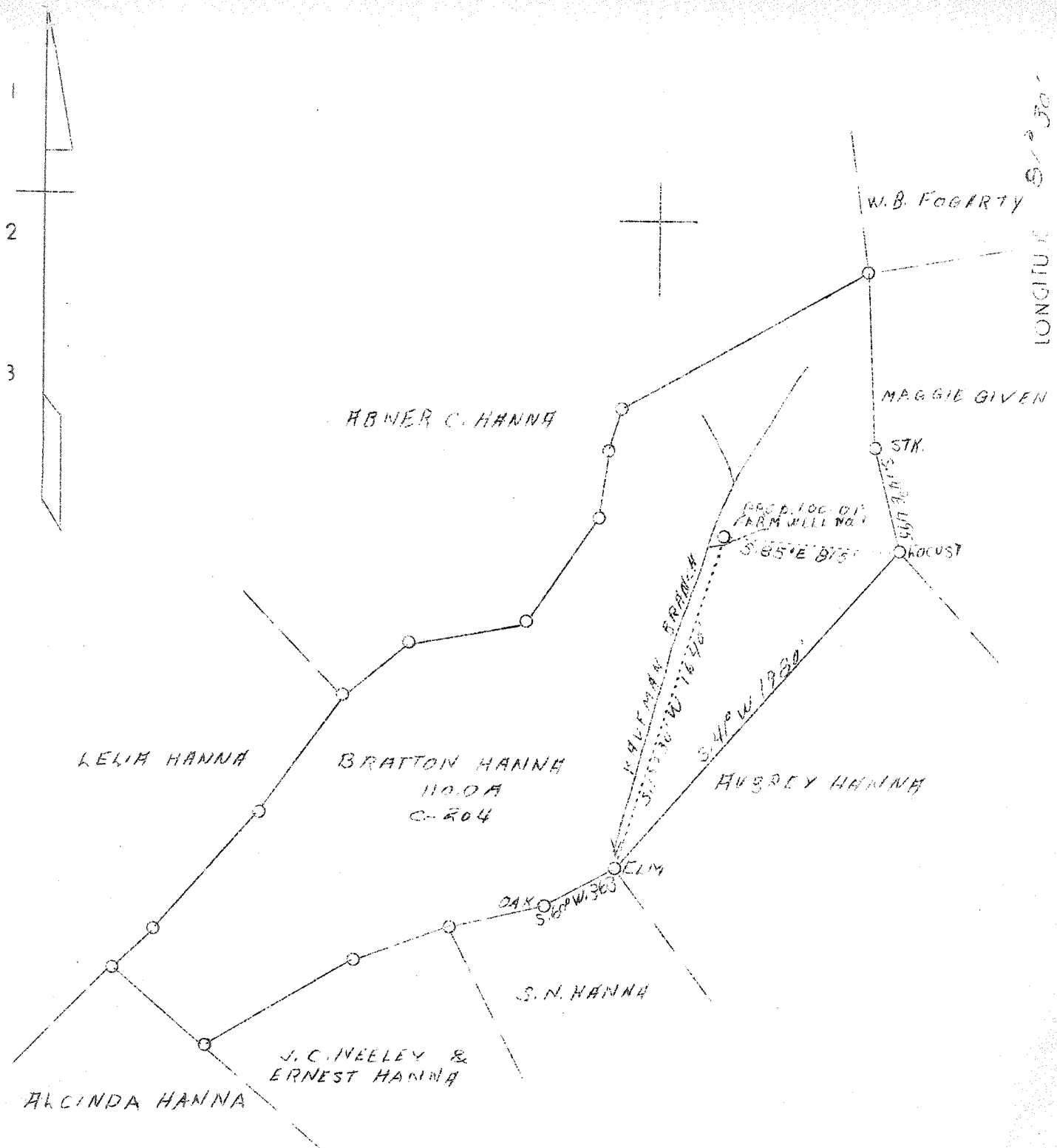


1 2 3

LATITUDE 38° 30'

LONGITUDE 81° 30'



New location

2.04 S.
2.88 W.

Vol. XIV, P. 317

1C (J-5)

Company	Columbian Carbon Co.
Address	Box 1240, Charleston, W. Va.
Farm	Bratton Hanna
Acres	110.0
Lease No.	C-204
Well (Farm) No.	One
Elevation	915.0' (Spirit Level)
Quadrangle	Charleston, N. E.
County	Kanawha
District	Elk
Engineer	James N. Sell
Eng. Reg. No.	772
Date	June 14, 1938
Scale	1" = 660'

STATE OF WEST VIRGINIA
 Department of Mines
 OIL & GAS DIVISION
 Charleston

WELL LOCATION MAP

File No. Kan-555 D

X Denotes location of well on U. S. Topographic Maps, Scale 1 to 62,500, latitude & longitude lines being represented by border lines as shown.

- Denotes one inch spaces on border line of original tracing.

C-6-192

Deep Well

✓

WEST VIRGINIA DEPARTMENT OF MINES

OIL & GAS DIVISION

W E L L R E C O R D

Permit No. Kan-555

Gas Well

Charleston N. J.

CASING & TUBING

Company	Columbian Carbon Co.	14	41-7	41-7
Address	Box 1240, Charleston, W. Va.	10-3/4	492-5	pulled
Farm	Bratton Hanna ACRES 110.0	8-5/8	1606-1	1606-1
Location	Coopers Creek	2-3/8	4341-11	4341-11
Well No.	1 (GW-418) ELEV. 918.0 DF			
District	Elk County Kanawha			
Surface & Mineral	Bratton Hanna, et al Route #5, Charleston, W. Va. (Contact Columbian Carbon Co. for addresses)			
Drilling commenced	7-13-38			
Drilling completed	9-30-38			
Date shot	Not shot			
Volume	1,400,000 c.f.			
Rock Pressure	535 lbs. 67 hrs.			
Salt Water	1145 HW			

FORMATION	COLOR	H ₂ O	TOP	Base	Result	FORMATION	COLOR	H ₂ O	TOP	Base	Result
Soil			0	10		Slate & Shells		SLM	3945	4319	SLM
Red Rock			10	80		Total Depth				4319	SLM
Sand			80	100							
Blue Slate			100	150		Pay: 3863-3886 - Brown Shale					
Red Rock			150	270		4016-4020					
Sand			270	310		4316-4318					
Slate			310	312							
Sand			312	360							
Slate			360	370		CEMENT RECORD:					
Sand			370	401		8/19/38 - Cemented 8-5/8" casing.					
Slate			401	415		Ran 80 sacks Green Bag cement mixed					
Sand			415	440		with 2% Aquagel solution. 5 sacks					
Slate			440	450		Aquagel 4% circulated ahead of cement.					
Sand			450	465		Casing went back to bottom O.K.					
Slate			465	480		20' cement left in pipe					
Gritty Lime			480	490		John Stewart, Cementer - Halliburton					
Sand			490	510		oil well Cementing Co.					
Slate			510	540							
Sand			540	569							
Slate			569	607							
Sand			607	709							
Slate			709	738							
Sand			738	844							
Slate			844	860							
Sand			860	875							
Slate			875	970							
Sand			970	1000							
Slate			1000	1011							
1st Salt Sand			1011	1030							
Slate			1030	1032							
2nd Salt Sand			1032	1065							
Slate			1065	1068	G-1068-						
3rd Salt Sand			1068	1335	show						
Black Slate			1335	1345	G-1374 -						
Broken Sand			1345	1373	sm.show						
4th Salt Sand			1373	1464							
Slate			1464	1486							
Nexton Sand			1486	1528							
Slate			1528	1535							
Little Lime			1535	1571							
Pencil Cave			1571	1575	SLM						
Big Lime	SLM		1575	1733	G-1668 Sh.						
Big Injun Sand			1733	1756							
Slate Shells			1756	3390							
Brown Slate & Shells			3390	3450							
White Slate & Shells			3450	3670							
Brown Slate			3670	3679							
White Slate			3679	3863							
Brown Shale			3863	3945	SLM						

WEST VIRGINIA DEPARTMENT OF MINES
OIL & GAS DIVISION

W E L L R E C O R D

Permit No. Kan-555

Gas Well

Charleston N. E. Quad.

C A S I N G & T U B I N G

Company	Columbian Carbon Co.	14	41-7	41-7
Address	Box 1240, Charleston, W. Va.	10-3/4	492-5	492-5
Farm	Bratton Hanna ACRES 110.0	8-5/8	1606-1	1606-1
Location	Coopers Creek	6-5/8	4946-5	4946-5
Well No.	1 (GW-418) ELEV. 918. D.F.	2-3/8	5081-4	5081-4
District	Elk - Kanawha County			
Surface & Mineral Address	Bratton Hanna, et al R 5, Charleston, W. Va.	No Packer		
	Contact Columbian Carbon for addresses			

DRILLING DEEPER:

Commenced	11-8-38
Completed	12-17-38
Shot	Not Shot
Volume	5,130,000 c.f.
Rock Pressure	920 lbs. hrs.
Oil	Show 5056
Salt Water	1145 - hole full

Formation Color ^{HAR} Top Base Result	Formation Color ^{HAR} Top Base Result
--	--

Old Total Depth in Slate & Shells	SLM	4319	SLM				
DRILLED DEEPER 11-8-38 to 12-17-38							
Slate & Shells	SLM	4319	4528				
Brown Shale			4528	4565			
Slate & Shells			4565	4610			
Brown Shale			4610	4790			
Slate & Shells			4790	4820			
Brown Shale			4820	4866			
Black Shale			4866	4899			
Corniferous Lime			4899	5009			
Oriskany Sand	SLM	5009	5056	Oil 5056 show			
Total Depth			5056	Pays: 5020; 5030; 5036-38			

CEMENT RECORD:

12/4/38 Ran 25 Sacks Alpha cement
6-5/8" casing. Ran 10' spacer.
Plug on top cement. 12' solid
cement in hole.

Patterson, cementer - Halliburton
Oil Well Cementing Company