

7M

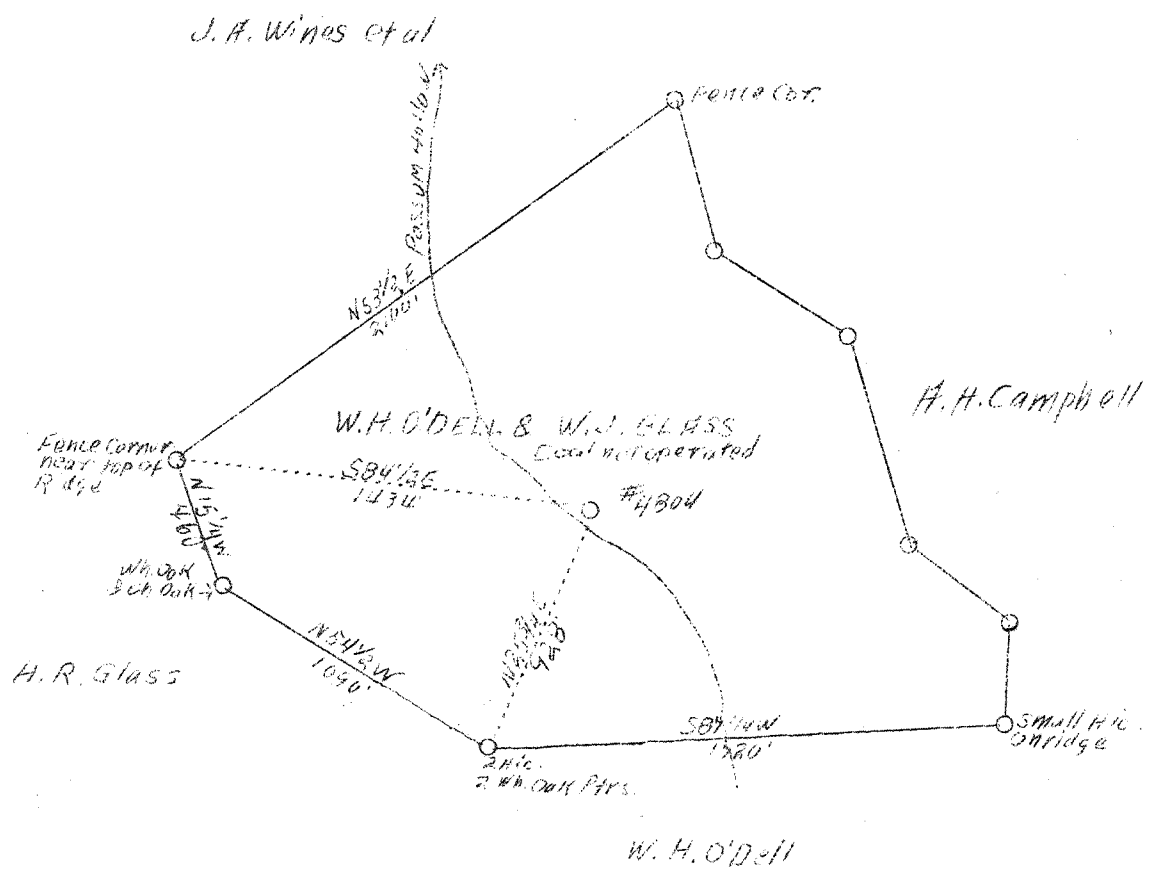
1 2 3

LATITUDE 38° 35'

$\frac{0.005 \ 75' \ 60 \ 15'}{38^{\circ} 35' 30'' \cdot 385 \ 3265}$   
 $\frac{81^{\circ} 35' \cdot 130 \cdot 130}{pkc}$

0.005 75'

LONGITUDE



A 30  
 4/50

32 S  
 0.3 W

New location

Company	United Fuel Gas Co.
Address	Charleston, W. Va.
Farm	W. H. O'Dell & J. J. Glass
Acres	87
Lease No.	40031
Serial No.	4804
Elevation	779.4 Ground
Quadrangle	Kenna S.C.
County	Kanawha
District	Poca
Engineer	G. A. Cunningham
Eng. Reg. No.	659
File No.	64 - 71
Date	June 27, 1938
Scale	1" = 660'

STATE OF WEST VIRGINIA  
 Department of Mines  
 OIL & GAS DIVISION  
 Charleston

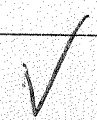
WELL LOCATION MAP

File No. Man-557 D

X Denotes location of well on U. S. Topographic Maps, scale 1 to 62,500, latitude and longitude lines being represented by border lines as shown.

- Denotes one inch spaces on border line of original tracing.

6-1938



WEST VIRGINIA DEPARTMENT OF MINES

OIL & GAS DIVISION

WELL RECORD

Permit No. Kan-557

Gas Well

Kenna Quad.

CASING & TUBING

Company	United Fuel Gas Co.	10	508	508
Address	Charleston, W. Va.	8-5/8	1747	1747
Farm	W. H. O'Dell & W. J. Glass	7	4825	4825
Acres	87			
Location	Possum Hollow			
Well No.	4804 ELEV. 783.4			
District	Poca - Kanawha County			
Surface	W. J. Glass, Sissonville, W. Va.			
Mineral	W. J. Glass & W. H. O'Dell Charleston, W. Va.			
Drilling commenced	Aug. 8, 1938 - completed Oct. 26, 1938			
Shot	Not shot			
Open Flow	56/10ths Merc. in 7 inch			
Volum	11,681,000 c.f.			
Rock Pressure	1370 lbs. 60 hrs.			
Water	Fresh-55 - Salt-1150			

Formation Color <sup>Max</sup> TOP Base Result Formation Color <sup>Max</sup> TOP Base Result

Formation	Color	Max	TOP	Base	Result	Formation	Color	Max	TOP	Base	Result
Surface			0	10		Slate & Lime shells			3420	3670	
Sand			10	55	W-55	Brown shale			3670	3685	
Red Rock			55	88		Slate & Lime shells			3685	3818	
Sand			88	90		Brown shale			3818	3992	
Blue Mud			90	95		White slate			3992	4480	
Sand			95	100		Brown shale			4480	4706	
Red Rock			100	108		White slate			4706	4731	
Blue Mud			108	123		Brown shale			4731	4773	
Red Rock			123	200		Black shale			4773	4809	
Sand			200	230		Corniferous lime			4809	4918	
White Slate			230	250		Oriskany sand			4918	4937	
Lime Shells			250	260		Total depth				4937	
Red Rock			260	270							
Slate & shells			270	320							
Sand			320	350							
White Slate			350	372							
Sand			372	435							
Slate			435	445							
Sand			445	480							
Slate & shells			480	490							
White Sand			490	515							
Slate			515	520							
Lime			520	546							
Sand			546	595							
Slate			595	645							
Sand			645	685							
Slate			685	715							
Sand			715	795							
Slate			795	855							
Sand			855	880							
Slate			880	990							
Lime			990	1015							
Sand			1015	1075							
Slate			1075	1085							
Salt Sand			1085	1482	W-1150						
Slate			1482	1497							
Lime			1497	1528							
Pencil Cave			1528	1532							
Big Lime			1532	1693							
Injun Sand			1693	1723							
Slate			1723	1741							
Lime shells			1741	1750							
Slate shells			1750	2126							
Brown shale			2126	2134							
Lime shells			2134	2142							
Slate & shells			2142	2525							
White slate			2525	3370							
Brown shale			3370	3420							

WEST VIRGINIA DEPARTMENT OF MINES  
OIL & GAS DIVISION  
W E L L R E C O R D

Permit No. Kan-557-D  
Kenna Quad.

Gas Well

Company	United Fuel Gas Co.
Address	Box 1256, Charleston, W. Va.
Farm	W. H. O'Dell & W. J. Glass ACRES 87
Location	Pessum Hollow of Poca River
Well No.	4804 ELEV. 783.4
District	Poca - Kanawha County
Surface & Mineral	W. J. Glass, et al, Sissonville, W. Va.
Commenced	Sept. 5, 1940
Completed	Sept. 12, 1940
Shot	-
Volume	Gas Well
Rock Pressure	-
Water	-

CASING & TUBING  
No change in Casing

DEEPENING RECORD

Original Depth	4937
Oriskany Sand	4918 4954
New Total Depth	4954