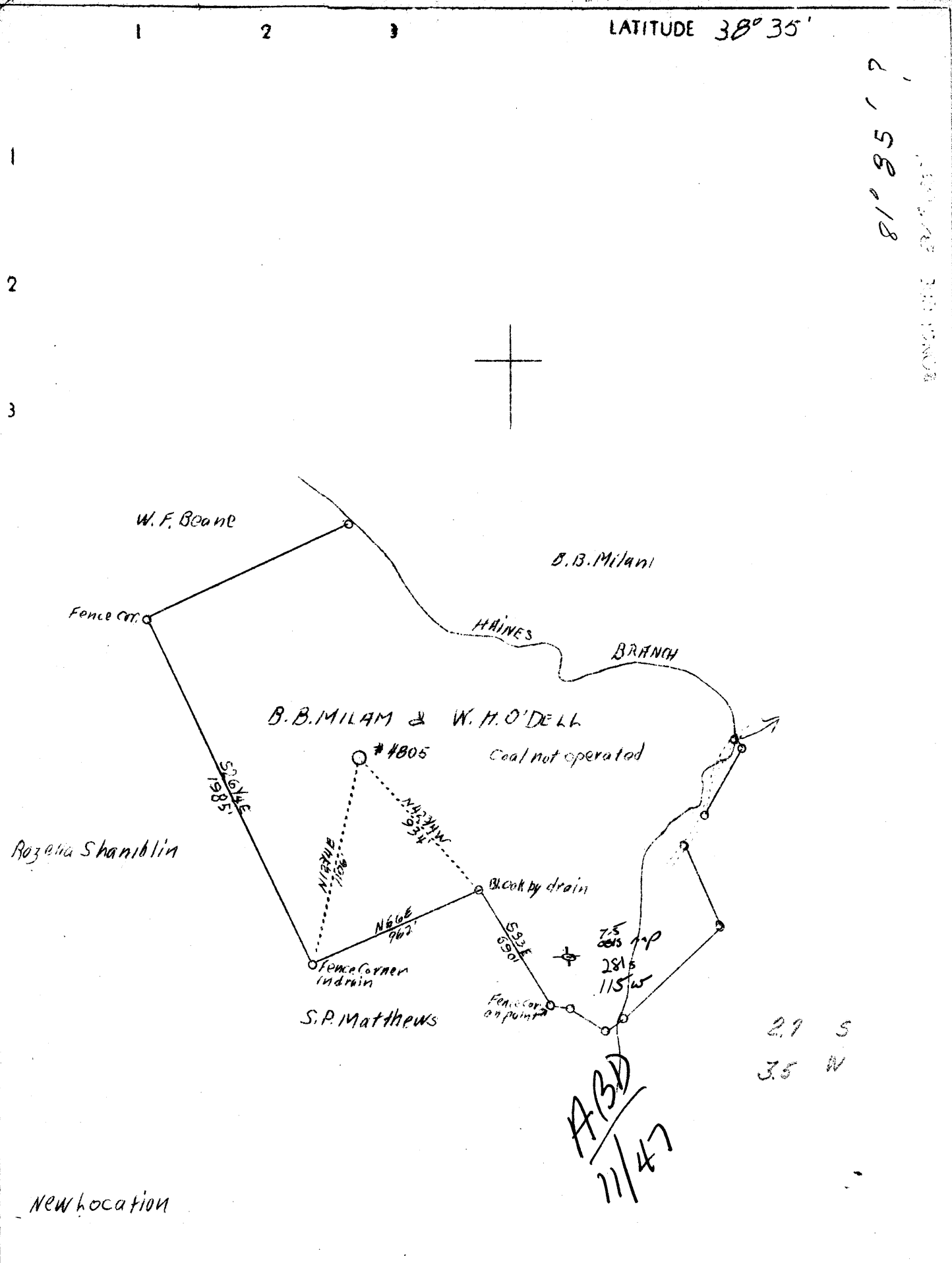


LATITUDE 38° 35'

81° 35' ?



27 S
35 W

ABD
11/47

New location

Company	United Fuel Gas Co.
Address	Charleston, W. Va.
Farm	B. B. Milam & W. H. O'Dell
Acres	53.38
Lease No.	40487 40029
Well (Farm) No.	One
Serial No.	4805
Elevation (S.P)	664.6 Ground
Quadrangle	Kenna S.C.
County	Kanawha
District	Poca
Engineer	G. A. Cunningham
Eng. Reg. No.	659
File No.	60-71
Date	June 27, 1938
Scale	1" = 660'

STATE OF WEST VIRGINIA
 Department of Mines
 OIL & GAS DIVISION
 Charleston

WELL LOCATION MAP
 File No. Kan-558

X Denotes location of well on U. S. Topographic Maps, scale 1 to 62,500, latitude and longitude lines being represented by border lines as shown.

- Denotes one inch spaces on border line of original tracing.

2-6 192

WEST VIRGINIA DEPARTMENT OF MINES

OIL & GAS DIVISION

WELL RECORD

Permit No. Kan-558

Gas Well

Kenna Quad.

CASING & TUBING

Company	United Fuel Gas Co.	14	50	50
Address	Charleston, W. Va.	10	505	505
Farm	B. B. Milam & W. H. O'Dell	8-5/8	1802	1802
Location	Haines Creek ACRES 107	7	4790	4790
Well No.	4805 ELEV. 671.7			
District	Poca - Kanawha County			
Surface	B. B. Milam, Sissonville, W. Va.			
Mineral	B. B. Milam & W. H. O'Dell Charleston, W. Va.			
Drilling commenced	Aug. 11, 1938			
Drilling completed	Oct. 24, 1938			
Shot	Not shot			
Open Flow	55/10ths Merc. in 7 inch			
Volume	11,577,000 c.f.			
Rock Pressure	1525 lbs. 48 hrs.			
Fresh water	20 - Salt Water 1230			

Formation Color ^{Har} 5 TOP Base Result Formation Color ^{Har} 5 TOP Base Result

Formation	Color	^{Har} 5	TOP	Base	Result	Formation	Color	^{Har} 5	TOP	Base	Result
Gravel			0	25	W-20						
Slate			25	90							
Red Rock			90	120							
Slate			120	170							
Red Rock			170	210							
Slate			210	250							
Red Rock			250	315							
Slate			315	355							
Sand			355	430							
Red Rock			430	440							
Slate			440	455							
Sand			455	485							
Slate			485	520							
Sand			520	565							
Slate			565	585							
Sand			585	640							
Slate			640	665							
Sand			665	690							
White Slate			690	730							
Slate, black			730	740							
Sand			740	825							
Slate			825	845							
Sand			845	860							
Slate & shells			860	1035							
Sand			1035	1045							
Slate			1045	1140							
Salt sand			1140	1498	W-1230						
Slate			1498	1503							
Sand			1503	1547							
Slate			1547	1556							
Little Lime			1556	1574							
Pencil Cave			1574	1580							
Big Lime			1580	1740							
Injun sand			1740	1795							
Shells			1795	2194							
Berea Sand			2194	2204							
Slate & shells			2204	3400							
Brown shale			3400	3460							
Slate & shells			3460	3815							
Brown shale			3815	3985							
White slate			3985	4430							
Brown shale			4430	4675							
Black shale			4675	4773							
Corniferous Lime			4773	4877							
Oriskany Sand			4877	4893							
Total Depth				4893							