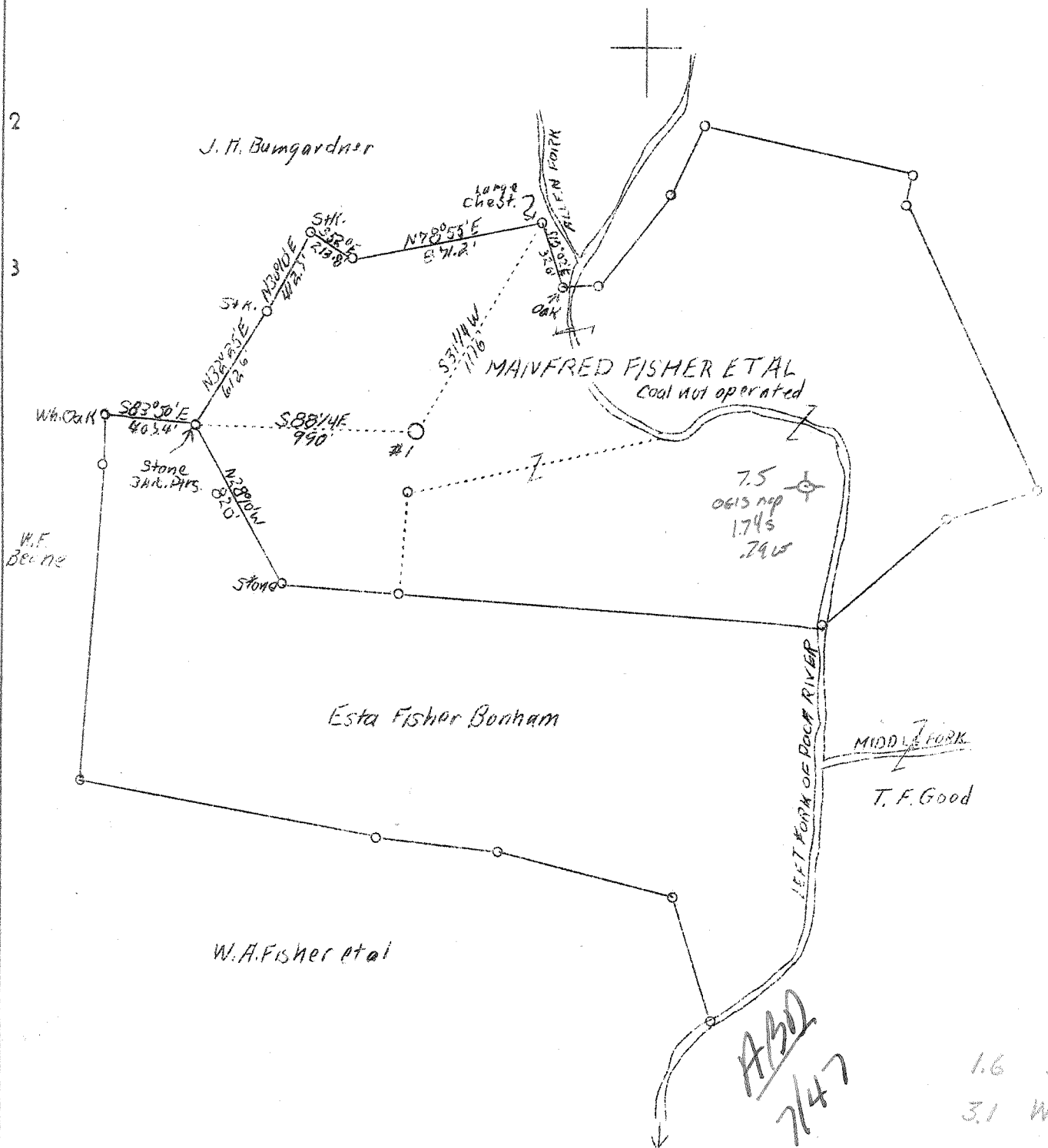


LATITUDE 38° 35'

LONGITUDE 81° 37' 30"



Company Mullins Gas Co.,
 Address Charleston, W. Va.
 Farm Manfred Fisher, et al
 Acres 123.25
 Well (Farm) No. One
 Elevation -
 Quadrangle Kenna S.E.
 County Kanawha
 District Poca
 Engineer G. A. Cunningham
 Eng. Reg. No. 659
 File No. 60-73
 Date June 29, 1938
 Scale 1" = 660'

STATE OF WEST VIRGINIA
 Department of Mines
 OIL & GAS DIVISION
 Charleston

WELL LOCATION MAP
 File No. Kan-560

X Denotes location of well on U. S. Topographic Maps, scale 1 to 62,500, latitude and longitude lines being represented by border lines as shown.

- Denotes one inch spaces on border line of original tracing.

G. A. Cunningham

WEST VIRGINIA DEPARTMENT OF MINES

OIL & GAS DIVISION

WELL RECORD

Permit No. Kan-560

Gas Well

Keena Quad.

CASING & TUBING

Company	Mullins Gas Company	10-3/4	735	735
Address	Box 28, Charleston, W. Va.	8-5/8	2030	2030
Farm	Manfred Fisher et al ACRES 123.25	7 O.D.	4982	4982
Location	Poca River	2"	5088	
Well No.	One ELEV. 821.5			
District	Poca County Kanawha			Packer - Parmaco
Surface & Mineral	J. W. Fisher Heirs			Cemented 20 Bags
Address	1129 Main St., W. Charleston, W. Va.			Cemented 26 Bags
Drilling commenced	July 21, 1938			Perf. top 5080-1/2
Drilling completed	Oct. 12, 1938			Perf. bot 5088
Date shot	10-14-38 - Depth 5082			
Open Flow	25/10ths Merc. in 7" O.D.			Casing Cemented
Volume	7,805,000 c. f.			Feet
Rock Pressure	1540 lbs. - hrs.			Size
Salt Water	1410'			4982 7" OD

Formation Color ^{Max}/₅ TOP Base Result Formation Color ^{Max}/₅ TOP Base Result

Soil		0	6						
Red Rock		6	195						
Sand Stone		195	245						
Red Rock		245	500						
Blue Slate		500	570						
Red Rock		570	739						
Sand		739	1020	W-970					
Slate & Shells		1020	1220						
Sand		1220	1250						
Slate & Shells		1250	1310						
Sand		1310	1335						
Black Slate		1335	1363						
Salt Sand		1363	1670	W-1410 EF					
Break		1670	1672						
Maxon Sand		1672	1742						
Break		1742	1745						
Little Lime		1745	1759						
Break Pencil		1759	1761						
Big Lime		1761	1910						
Break		1910	1912						
Injun Sand		1912	1992						
Slate		1992	1995						
Black Lime		1995	2045						
Slate & Shells		2045	2360						
Shale Brown		2360	2380						
Berea Grit Shells		2380	2420						
Slate & Shells		2420	3650	4967 5080					
Shale Brown		3650	3680	822					
Gorden Shells		3680	3750	4145 4558					
Slate & Shells		3750	3980						
Shale Brown		3980	4180						
Shale Blue		4180	4640						
Shale Brown		4640	4840						
Shale Blue		4840	4905						
Coffee Shale		4905	4967	5070 SLM					
Corniferous		4967	5082	Gas 5082					
Oriskany		5080		5082 Top of shot					
Total Depth		5114		5103 Bottom of shot					