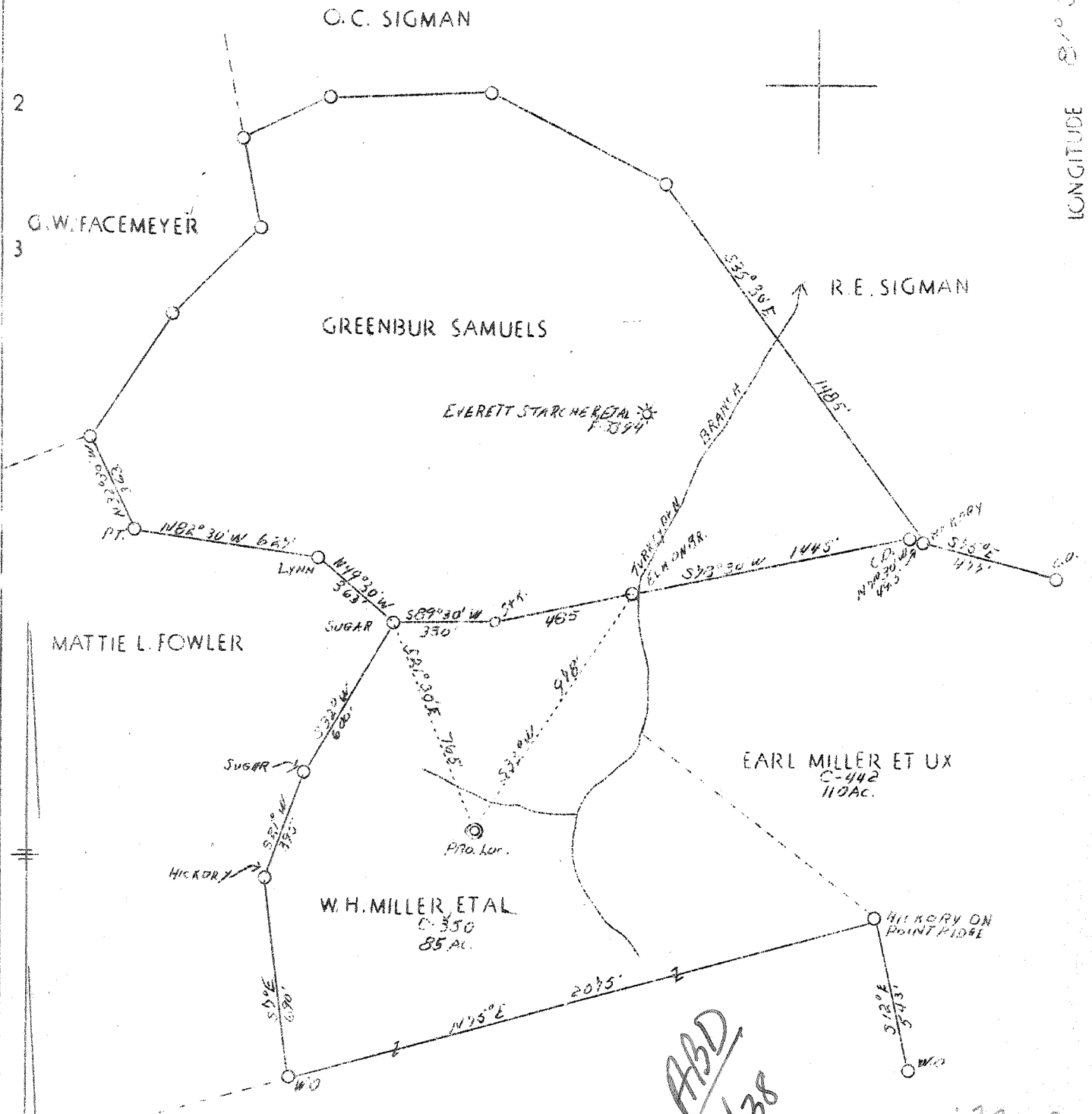


LATITUDE 38° 30'

LONGITUDE 81° 35'



NEW LOCATION	7.5' 0615 Loc	15'
	38° 30' 1.965	1.965
	81° 35' 1.870	1.870

ABD
11/38

2.0 S
2.0 W

Company Columbian Carbon Co.,
 Address Box 1240, Charleston, W.Va.
 Farm W. H. Miller, et al and Earl Miller, et ux
 Acres 195
 Lease No. C-350 & C-442
 Well (Farm) No. One
 Serial No. GW-
 Elevation 823' (Spirit Level)
 Quadrangle Charleston - 2 - N. E. NC
 County Kanawha
 District Poca
 Engineer C. A. Branham
 Eng. Reg. No. 683
 Date July 6, 1938
 Scale 1" = 500'

STATE OF WEST VIRGINIA
 Department of Mines
 OIL & GAS DIVISION
 Charleston

WELL LOCATION MAP

File No. Kan. 562

X Denotes location of well on U. S. Topographic Maps, scale 1 to 62,500, latitude and longitude lines being represented by border lines as shown.

- Denotes one inch spaces on border line of original tracing.

6-0 192

WEST VIRGINIA DEPARTMENT OF MINES

OIL & GAS DIVISION

WELL RECORD

Permit No. Kan-562

Dry Hole

Charleston 2 N.E. Quad.

CASING & TUBING

Company	Columbian Carbon Co.	14	36
Address	B-1240, Charleston, W. Va.	10-3/4	500 pulled
Farm	W. H. Miller ACRES 195	8-5/8	1665-6
Location	Turkeypen Br. of Tupper Ck.	6-5/8	4915-8
Well No.	1 (G-413) ELEV. 823 G.		
District	Poca - Kanawha County		Casing cemented:
Surface & Mineral	W. H. Miller, et al, Charleston, W.Va.		See below
Drilling commenced	8-3-38 - completed 11-12-38		
Shot	11-12-38 - Depth 4987-5039		
Volume	Dry hole		
Fresh water	88' 1-13" blr. per hr.		
Salt Water	670' 1 1/2-10" blr. per hr.		
	1150' raised 200' in hole		
	1185 HP7		
	1824 - 3/4 - 6" blr. pr. hr.		

Formation Color ^{MAP} TOP Base Result Formation Color ^{MAP} TOP Base Result

Red Rock		0	36	White Slate		4795	4830
Sand		36	40	Brown Shale		4830	4879 SLM
Red Rock		40	185	Corniferous Lime	SLM	4879	4978 SLM
Sand		185	195	Criskany Sand	SLM	4978	5013
Blue Slate		195	220	Lime Break	-0	5013	5024
Sand		220	260	Criskany Sand		5024	5046
Red Rock		260	271	Lime - 4		5046	5063
Slate		271	300	Total Depth		5063	
Red Rock		300	335				
Slate		335	385	Gas 4994 - not enough to gauge.			
Sand		385	472				
Slate		472	492	CEMENT RECORD:			
Sand		492	503	9/14/38 Cemented 8-5/8 Casing.			
Slate		503	542	Ran 165 sacks Alpha cement mixed with			
Sand		542	562	2% Aquagel with 10 sacks silicated mud			
Slate		562	590	ahead of cement. Ran 10' spacer between			
Sand		590	607	plugs. 167' solid cement in pipe.			
Slate		607	620	Dallas Halley, Cementer - Halliburton			
Sand		620	680	Oil Well Cementing Co.			
Slate		680	690				
Sand		690	720	10/22/38 - Cemented 6-5/8 Casing. Ran			
Slate		720	753	40 sacks Alpha cement. Ran 10' spacer			
Sand		753	785	ahead of cement. 12' solid cement in			
Slate & Shells		785	1038	pipe.			
Sand		1038	1070	Mack Mills, Cementer - Halliburton Oil			
Slate		1070	1080	Well Cementing Co.			
Salt Sand		1080	1452				
Slate		1452	1465				
Sand		1465	1470				
Slate		1470	1478				
Lime		1478	1482				
Sand		1482	1548				
Slate		1548	1551				
Lime		1551	1560				
Sand		1560	1595				
Slate		1595	1607				
Little Lime		1607	1631				
Slate		1631	1640				
Lime		1640	1643				
Slate		1643	1650				
Big Lime	SLM	1650	1810				
Big Injun		1810	1840				
Slate & Shells		1840	1866				
Blk Lime		1866	1906				
Slate & Shells		1906	3890				
Brown Shale		3890	4080				
White Slate		4080	4552				
Brown Shale		4552	4795				