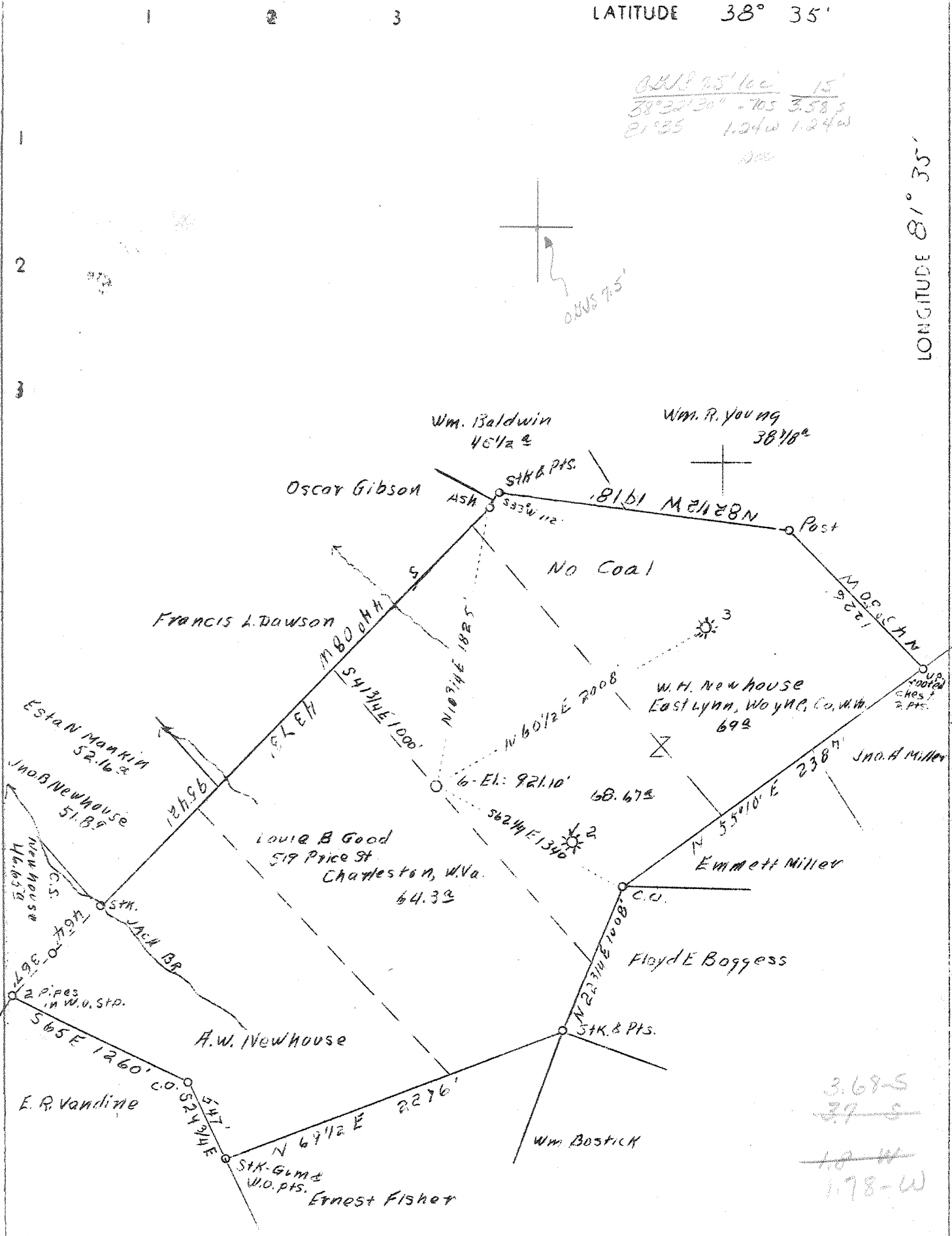


LATITUDE 38° 35'

LONGITUDE 81° 35'

$\frac{0.001375' \times 100'}{15'}$
 $\frac{38^{\circ} 32' 30'' - 705}{3.585}$
 $\frac{81^{\circ} 33' - 1.24W}{1.24W}$
 000



3.68 S
~~39 S~~
~~10 W~~
 1.78-W

Company South Penn Oil Co.
 Address 411-7th Ave., Pittsburgh, Pa.
 Farm T. H. Newhouse
 Acres 500
 Lease No. 61410
 Well (Farm) No. 6
 Quadrangle Kenna *SC*
 County Kanawha
 District Poca
 Engineer E. C. Tabler
 Eng. Reg. No. -
 Date July 18, 1938
 Scale 1" = 800'

STATE OF WEST VIRGINIA
 Department of Mines
 OIL & GAS DIVISION
 Charleston
 WELL LOCATION MAP
 File No. Kan-567D

X Denotes location of well on U. S. Topographic Maps, scale 1 to 62,500, latitude and longitude lines being represented by border lines as shown.
 - Denotes one inch spaces on border line of original tracing.

WEST VIRGINIA DEPARTMENT OF MINES

OIL & GAS DIVISION

WELL RECORD

Permit No. Kan-567

Gas Well

Kenna Quad.

CASING & TUBING

Company	South Penn Oil Co.	16	12-10 (Pulled 6-2)
Address	411-7th Ave., Pittsburgh, Pa.	13-3/8	822-3 " 8-2
Farm	T. H. Newhouse ACRES 500	10	1728-2 " 11-7
Location	Poca River	8-5/8	1968-9 " 6-1
Well No.	6 ELEV. 921.10	7	5023
District	Poca - Kanawha County		
Surface	Louie P. Good et al, 519 Price St., Charleston, W. Va.	PACKER: See below	
Mineral	W.H. Newhouse et al, Sissonville, W. Va.		
Drilling commenced	Sept. 1, 1938		
Drilling completed	Dec. 20, 1938	CASING CEMENTED:	
Shot	Not shot	Feet	Inches
Open Flow	26/10ths Mar. in 7" OD 20# csg.	10	1715
Volume	9,336,000	8-5/8	1960
Rock Pressure	1280 lbs. 24 hrs.	7	4971
Salt Water	1335 - hole full		

Formation Color ^{Mar} TOP Base Result Formation Color ^{Mar} TOP Base Result

Formation	Color	TOP	Base	Result	Formation	Color	TOP	Base	Result
Clay		0	30		White Slate		4075	4590	
Slate		30	70		Brown Shale		4590	4890	
Red Rock		70	100		Black Shale - ^{Marcellus}		4890	4951	
Lime		100	140		Coniferous		4951	5059	
Red Rock		140	165		Criskany		5059	not drilled thru	
Sand		165	225		TOTAL DEPTH			5079	
Slate		225	250					475	
Red Rock		250	300		Gas 1828-1830	Insf. to test			
Sand		300	330		Gas 1854	4/10 1" op. 23,000 c.f.			
Red Rock		330	390		Gas 4025	Insf. to test			
Lime		390	400		Gas 5060	1/10 M. 7" OD 20# csg. 1,859,000 cf			
Slate		400	435		Gas 5060-62	30/10 7" 20# 20# 2,713,900 cf			
Red Rock		435	450		Gas 5062-65	9/10 M 7" " " 5,510,000 cf			
Slate & Shells		450	500		Gas 5065-72	25/10 M 7" " " 9,170,000 cf			
Red Rock		500	505		Gas 5072-78	26/10 M 7" " " 9,336,000 cf			
Slate & Shells		505	605						
Lime		605	625						
Slate		625	630		PACKER RECORD:				
Lime		630	640		Shoe 10-3/4" 1715'				
Sand		640	755		" 8-5/8 1960				
Slate		755	818		" 7" OD 4971				
Sand		818	914						
Slate		914	950						
Sand		950	983						
Slate		983	1090						
Sand		1090	1126						
Slate & Shells		1126	1194						
Sand - 23		1194	1283						
Slate		1283	1285						
Salt Sand		1285	1408						
Slate		1408	1430						
Gritty Lime		1430	1450						
Sand - Salt Sand?		1450	1575						
Break		1575	1578						
Maxon Sand		1578	1650						
Slate		1650	1652						
Little Lime		1652	1691						
Pencil Cove		1691	1695						
Big Lime		1695	1852						
Big Injun		1852	1907						
Black Slate		1907	1958						
Lime Shells		1958	1970						
Slate & Shells		1970	2352						
Berea Grit		2352	2364						
Slate & Shells		2364	3830						
Brown Shale - 4A1		3830	3847						
Slate		3847	3975						
Shale		3975	4075						

WEST VIRGINIA DEPARTMENT OF MINES
OIL & GAS DIVISION
W E L L R E C O R D

Permit Kan-567-D		Gas Well
Company	South Penn Natural Gas Co.	Casing & Tubing
Address	Union Trust Bldg., Parkersburg, W.Va.	
Farm	T.H. Newhouse Acres 500	---
Location	Poca River	
Well No.	6-D.D. Elev 921.10	
District	Poca Kanawha County	
Surface	Louie B. Good et al, 519 Price St. Charleston, W.Va.	
Mineral	W.H. Newhouse et al, Sissonville, W.Va.	
Commenced	Oct. 24, 1941	
Completed	Nov. 10, 1941	
Shot	11-12-41 Depth 5085-5095-30 qts.	
Flow	24/10ths M in 3"	
Volume	1,715,000 C.F.	
Rock Pressure	325 lbs. 1 hrs.	

DRILLED DEEPER

Commenced drilling		5074
Oriskany	5074	5102--not drilled thru
TOTAL DEPTH		5102
		(475)
Gas test before drilling deeper		18/10W 3" Opng.--405,000 C.F.
Gas(after drilling deeper)	5078'	20/10 W 3" Opng.,-424,000 C.F.
Gas " "	5088	24/10 M 3" Opng.,-1,715,000 C.F.

NOTE:-Increased gas from 18/10 M 3" Opng., 1,485,000 C.F. to
64/10 M 3" Opng., 2,800,000 C.F.
1 hour after shot