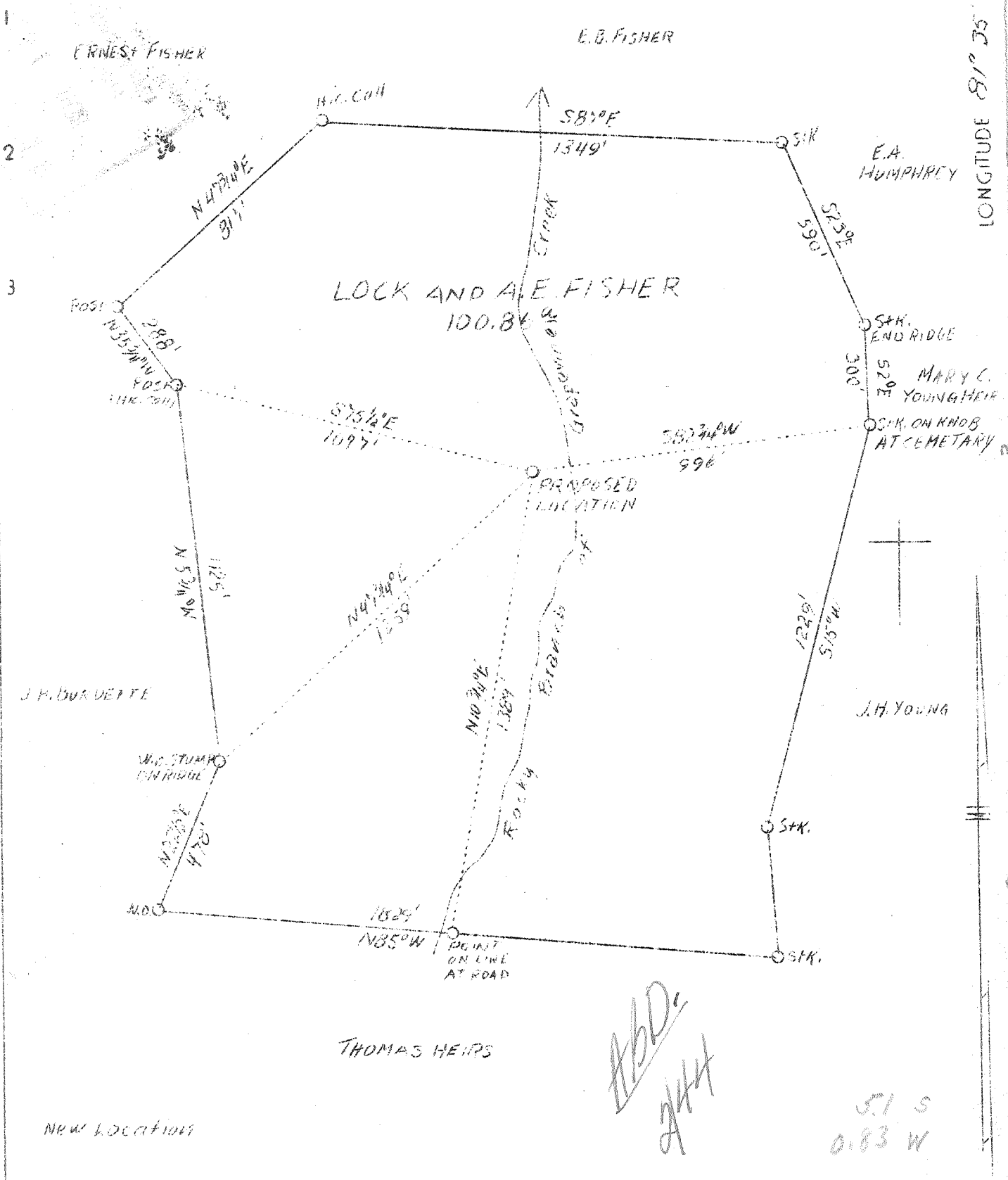


M

LATITUDE 38° 35'

LONGITUDE 81° 35'



Company Spartan Gas Company  
 Address Kanawha Valley Bldg.,  
 Charleston, W. Va.  
 Farm Lock & A. E. Fisher  
 Acres 100.86  
 Well (Farm) No. One  
 Elevation 795.7 (Stadia)  
 Quadrangle Kenna S. E. *SC*  
 County Kanawha  
 District Poca  
 Engineer Robert S. Hyde  
 Eng. Reg. No. 646  
 Date July 13, 1938  
 Scale 1" = 400'

STATE OF WEST VIRGINIA  
 Department of Mines  
 OIL & GAS DIVISION  
 Charleston  
 WELL LOCATION MAP  
 File No. Kan-571

X Denotes location of well on U. S. Topographic Maps, scale 1 to 62,500, latitude and longitude lines being represented by border lines as shown.

- Denotes one inch spaces on border line of original tracing.

*6-6-38* ✓

WEST VIRGINIA DEPARTMENT OF MINES

OIL & GAS DIVISION

W E L L R E C O R D

Permit No. Kan-571

Kenna S. E. Quad.

Gas Well

CASING & TUBING

Company	Spartan Gas Co.,	13	36-3
Address	618 Kanawha Valley Bldg., Charleston, W. Va.	10	570 All Puled
Farm	Lock Fisher #1 ACRES 100	8-1/4	1732
Location	Grpevine Creek, Poca Distr.	6-5/8	4784
Well No.	One	2	4915-6
District	Poca - Kanawha County		4785' 61M of 6-5/8
Shot	-		casing cemented on
Surface & Mineral	Lock Fisher, et al, Sissonville		Oct. 9, 1938 with 25
Drilling commenced	August 10, 1938		bags of cement
Drilling completed	Oct. 13, 1938		
Open Flow	10/10ths Water in 6-5/8"		
Volume	4,311,000 c.f.		
Rock Pressure	1450 lbs, 48 hrs.		
Water	-		

Formation Color <sup>1/2</sup> TOP Base Result Formation Color <sup>1/2</sup> TOP Base Result

Gravel		36	36						
Sand		36	46						
Red Mud		46	120						
White Slate		120	280						
Red Rock		280	285						
Sand		285	323						
White Slate		323	360						
Sand		360	500						
Slate		500	540						
Sand		540	544						
Slate		544	570						
Sand		570	605						
Slate		605	610						
Sand		610	625						
Slate		625	650						
Sand		650	670						
Slate		670	693						
Sand		693	760						
Slate		760	785						
Sand		785	805						
Slate		805	835						
Sand		835	850						
Slate		850	910						
Sand		910	940						
Slate		940	970						
Salt Sand		970	1460	HFV 1050					
Slate		1460	1468						
Little Lime		1468	1497						
Pencil Cave		1497	1501						
Big Lime		1501	1657						
Big Lxjun		1657	1705						
Sl.&Shells		1705	2110						
Brown Shale		2110	2120						
Perea Sand		2120	2130						
Slate&Sh.		2130	3300						
Br. Shale		3300	3335						
Sl. & Sh.		3335	3800						
Brown Shale		3800	3985						
White Slate		3985	4440						
Brown Shale		4440	4702						
White Slate		4702	4732						
Brown Shale		4732	4775						
Corniferous		4775	4887						
Oriskany		4887	4907	Gas 4890-4900					
TOTAL DEPTH			4907						