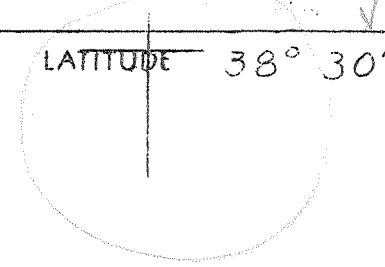
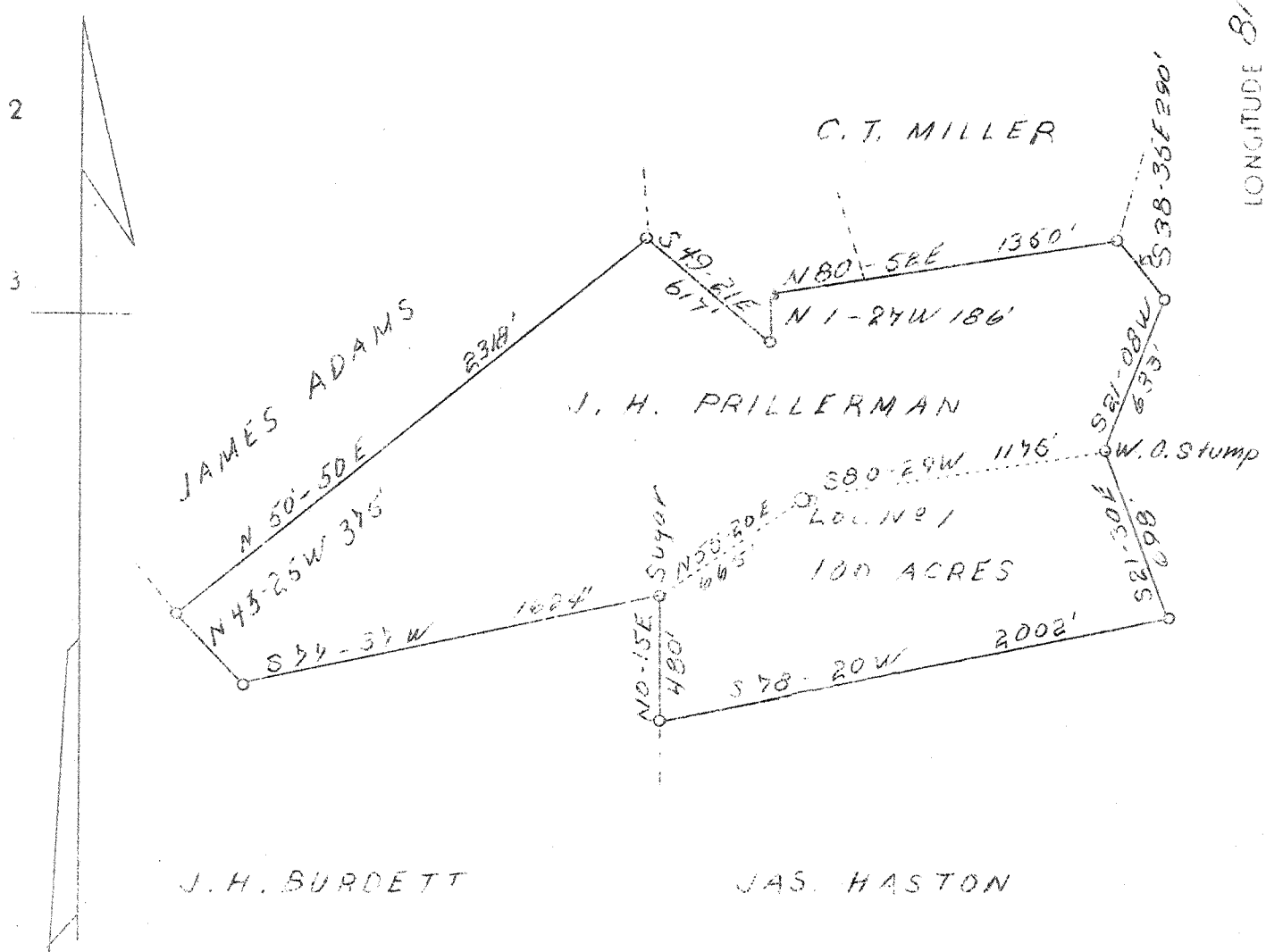


771

1 2 3



LONGITUDE 81° 35'



ABD
12/16

New Location $\frac{25' 06.15 \text{ Sec}}{38^\circ 30' .185} \frac{15'}{.185}$
 $\frac{91^\circ 35' 2.07W}{2.07W}$

0.1 S
2.2 W

Company United Carbon Company
 Address Charleston, W. Va.
 Person J. H. Prillerman
 Acres 100
 Lease No. 2614
 Well (Farm) No. One
 Serial No. 748
 Illustration (S.P.) 107618
 Quadrangle Charleston N.C.
 County Kanawha
 District Poca
 Engineer E. B. Wilson
 Eng. Reg. No. 494
 Date July 27, 1938
 Scale 1" = 660'

STATE OF WEST VIRGINIA
 Department of Mines
 OIL & GAS DIVISION
 Charleston

WELL LOCATION MAP
 File No. 161-572

X Denotes location of well on U. S. Topographic Maps, scale 1 to 62,500, latitude and longitude lines being represented by border lines as shown.

- Denotes one inch spaces on border line of original tracing.

6-4-192 ✓

WEST VIRGINIA DEPARTMENT OF MINES

OIL & GAS DIVISION

WELL RECORD

Permit No. Kan-572

Gas Well

Charleston Quad.

CASING & TUBING

Company	United Carbon Co.	10	743	743
Address	901 Union Bg., Charleston, W. Va.	8-1/4	2044	2044
Farm	J. H. Prillerman	6-5/8	5066	5066
Location	Tuppers Creek	2 tbg.		5171
Well No.	1 748 ELEV. 1076.5			
District	Poca - Kanawha County	CASING CEMENTED:		
Surface & Mineral	J. H. Prillerman, Legg, W. Va.	Size	Feet	Date
Drilling commenced	Aug. 19, 1938	8-5/8	700	9/27/38
Drilling completed	Nov. 11, 1938	6-5/8	222	11/6/38
Date shot	Not shot	Coal Encountered at 595		
Open Flow	100/10ths Merc. in 6-5/8" O.D.			
Volume	13,629,000 c.f.			
Rock Pressure	1500 lbs. 36 hrs.			
Salt Water	1425			

Formation	Color	Mar	Top	Base	Result	Formation	Color	Mar	Top	Base	Result
Sand	yel.	c	0	40		Lime	wh.	h	4000	4050	
Rock	red	s	40	50		Slate & Shells	lgt.	d	4050	4110	
Slate	blue	s	50	90		Shale	brn.	s	4110	4250	
Sand	wh.	h	90	120		Slate & Shells	lgt.	c	4250	4735	
Slate	lgt.	s	120	200		Shale	brn.	s	4735	4974	
Rock	red.	s	200	210		Slate	lgt.	s	4974	4995	
Slate	lgt.	s	210	295		Shale	blk.	s	4995	5046	
Rock	red	s	295	335		Corniferous Lime	h		5046	5155	
Slate	wh.	s	335	340		Oriskany Sand	h		5155	5175	
Sand	wh.	h	340	380		Total Depth				5175	
Rock	red	s	380	410							
Slate	blue	s	410	416							
Rock	red	s	416	427							
Slate	blue	s	427	440							
Sand	wh.	h	440	460							
Slate	lgt.	s	460	505							
Sand	wh.	h	505	543							
Slate	wh.	s	543	555							
Sand	wh.	h	555	595							
Coal			595	598							
Slate	drk.	s	598	646							
Sand	wh.	h	646	715							
Slate & Shells	lgt	c	715	850							
Sand	wh.	h	850	930							
Slate	wh.	s	930	940							
Sand	wh.	h	940	960							
Slate	drk	s	960	980							
Little Lime	wh.	h	980	1010							
Slate	wh.	s	1010	1025							
Sand	wh.	h	1025	1067							
Slate & Shells	s drk	s	1067	1275							
Sand	lgt.	h	1275	1326							
Slate	lgt.	s	1326	1355							
1st Salt S	lgt.	h	1355	1630	NEW 1425						
Slate	drk	s	1630	1670							
2nd Salt S	wh.	h	1670	1768							
Slate	blk	s	1768	1780							
Little Lime	wh.	h	1780	1807							
Slate	drk.	s	1807	1810							
Big Lime	wh.	h	1810	1976							
Injur	wh.	h	1976	2028							
Slate & Shells	s lgt	c	2028	2435	G 2380 show						
Berea Shells	s lgt	h	2435	2555							
Slate & Shells	s lgt	c	2555	3670							
Shale	brn.	c	3670	3720							
Slate & Shells	s lgt	c	3720	3855							
Lime	lgt	h	3855	3965							
Slate	drk	s	3965	4000							