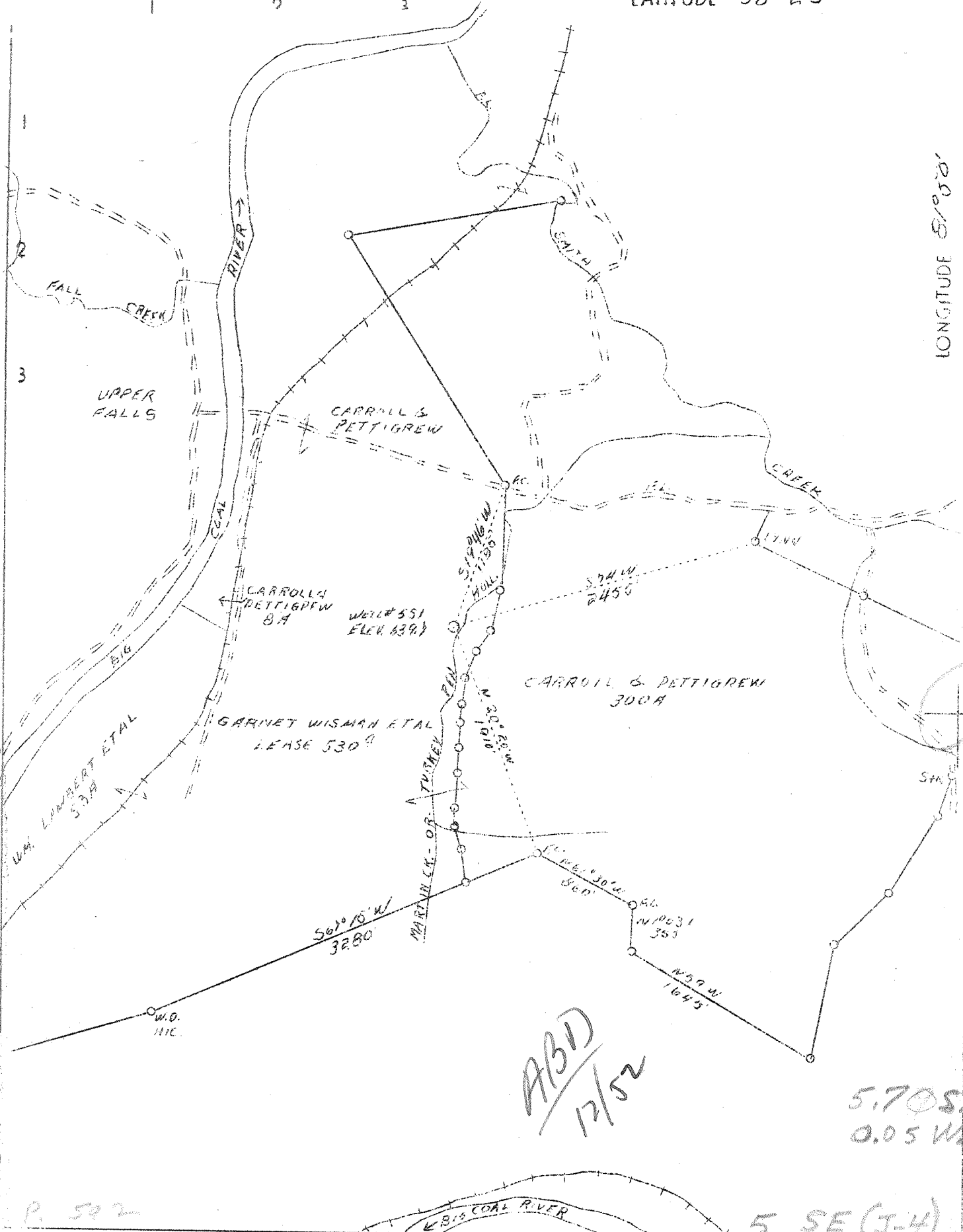


LATITUDE 38° 25'

LONGITUDE 81° 50'



P. 502

5 SE (J-4)

Company Owens-Libby-Owens Gas Dept.  
 Address Box 1375, Charleston, W.Va.  
 Farm Garnet Wisman, et al  
 Lease No. 530  
 Lease No. 1041  
 Well (Farm) No. One  
 Section No. 551  
 Quarter Section St. Albans - C  
 County Kanawha  
 District Washington  
 Engineer T. S. Flournoy  
 Eng. Reg. No. 269  
 Date July 11, 1938  
 Scale 1" = 1000'

STATE OF WEST VIRGINIA  
 Department of Mines  
 OIL & GAS DIVISION  
 Charleston

WELL LOCATION MAP

File No. Kan-575

X Denotes location of well on U. S. Topographic Maps, scale 1 to 62,500, latitude and longitude lines being represented by border lines as shown.

- Denotes one inch spaces on border line of original tracing.

Samples 11-Band C (1433-4547')

1-1

Deep Well ✓

WEST VIRGINIA DEPARTMENT OF MINES  
OIL AND GAS DIVISION

W E L L R E C O R D

Permit No. Kan-575

Gas Well

St. Albans Quad.

Casing & Tubing

Company	The Owens, Libbey-Owens	13	38 1/2	38 1/2
	Gas Department	10	178	178
Address	P.O. Box 1375, Chas., W. Va.	8-1/4	1484	None
Farm	Garnett Wisman Acres 530	6-5/8	2149	2149
Location	Little Coal River	3	2172	2172
Well No.	551 Elev. 639.7			
District	Washington Kanawha County			
Surface	Garnett Wisman et al			Kind of Packer
Mineral	Sure			Reeter disc well
Drilling commenced	Oct. 24, 1938			Size-6 5/8x3"x18"
Drilling completed	Jan. 13, 1939			Depth set 2170'
Date shot	Jan. 5, 1939	Depth of shot	3546-3809	
Open Flow	30/10ths. Water in 1"			COAL ENCOUNTERED AT
Volume	43,000		146'36"	
Rock Pressure	550 lbs. 72 hrs.		321'36"	
Fresh Water	50'-85'			
Salt Water	425.990-1708			

Formation Color <sup>Major</sup> TOP Base Result Formation Color <sup>Major</sup> TOP Base Result

Formation	Color	Major	TOP	Base	Result	Formation	Color	Major	TOP	Base	Result
Clay	Yol.	S	0	8		Shale	Dark	S	3561	3583	
Mud	Dark	"	8	36		Shale	Brown	"	3583	3796	
Sand	Gray	"	36	61	Fr. water	Gas 3614	Test 387	cu. ft.			
Slate	White	"	61	83	50' 5bails p/h						
Sand	White	"	83	106	Fr. water	Gas 3689	"	548	"		
Clay	Blue	"	106	146	85' hole full						
Coal	Black	"	146	149		Gas 3749	"	574	"		
Slate	Dark	"	149	165		Slate	Light	S	3796	4176	
Sand	White	"	165	214		"	Dark	"	4176	4207	
Slate	Dark	"	214	285		Shale	"	"	4207	4238	
Sand	Gray	"	285	321		Slate	Light	"	4238	4246	
Coal	Black	"	321	324		Shale	Brown	"	4246	4425	
Slate	Black	"	324	341	352'-	Corn. Line	Dark	H	4425	4449	
Sand	White	"	341	386	Sh. gas	"	Light	"	4449	4484	
Slate	Dark	"	386	448	S. water	"	Dark	"	4484	4494	
Sand	White	"	448	465	425' 3b	Paris. Sand	White	"	4494	4506	
Slate	Black	"	465	528		Line	Brown	"	4506	4547	
Sand	White	"	528	558		Total depth				4547	
Slate	Dark	"	558	721							WELL PLUGGED BACK
Sand	Gray	"	721	749		Clay, Sand Pumpings					
Slate	Dark	"	749	859		and Rocks				4471	4547
Sand	Dark	"	859	884		Wood Plug				4467	4471
Slate	Dark	"	884	894		Cement				4460	4467
Salt sand	White	H	894	1379	S. water	Open Hole				3900	4460
Slate	White	S	1379	1443	990' hole sl.						
Little Line	Dark	H	1443	1469		Bridge				3809	3900
Big Line	White	"	1469	1664							
Slate			1664	1689							
Sand	Gray	S	1689	1710							
Gas 1689'-1708			4	124							
Salt water	1708-4	bails p/h	gas	blew out							
Sl. & Shell	Dark	S	1710	2128		4425	4494	4506			
Slate	Dark	"	2128	2134		640	640	640			
Shale	Brown	"	2134	2149		3785	3854	3866			
Berea Sand	White	H	2149	2168							
Line shell	Dark	"	2168	2180							
Sl. & Shell	Dark	"	2180	2751							
"	"	S	2751	2820							
"	Light	"	2820	2889							
"	Dark	"	2889	3088							
"	"	H	3088	3100							
"	"	S	3100	3376							
Gas 3241-245			cu. ft.								
"	3313-Test		274	cu. ft.							
Sl. & Shell	Bro.	S	3376	3400							
"	Drk.	"	3400	3498							
Shale	Light	"	3498	3521							
Sl. & Shell	Drk.	"	3521	3561							