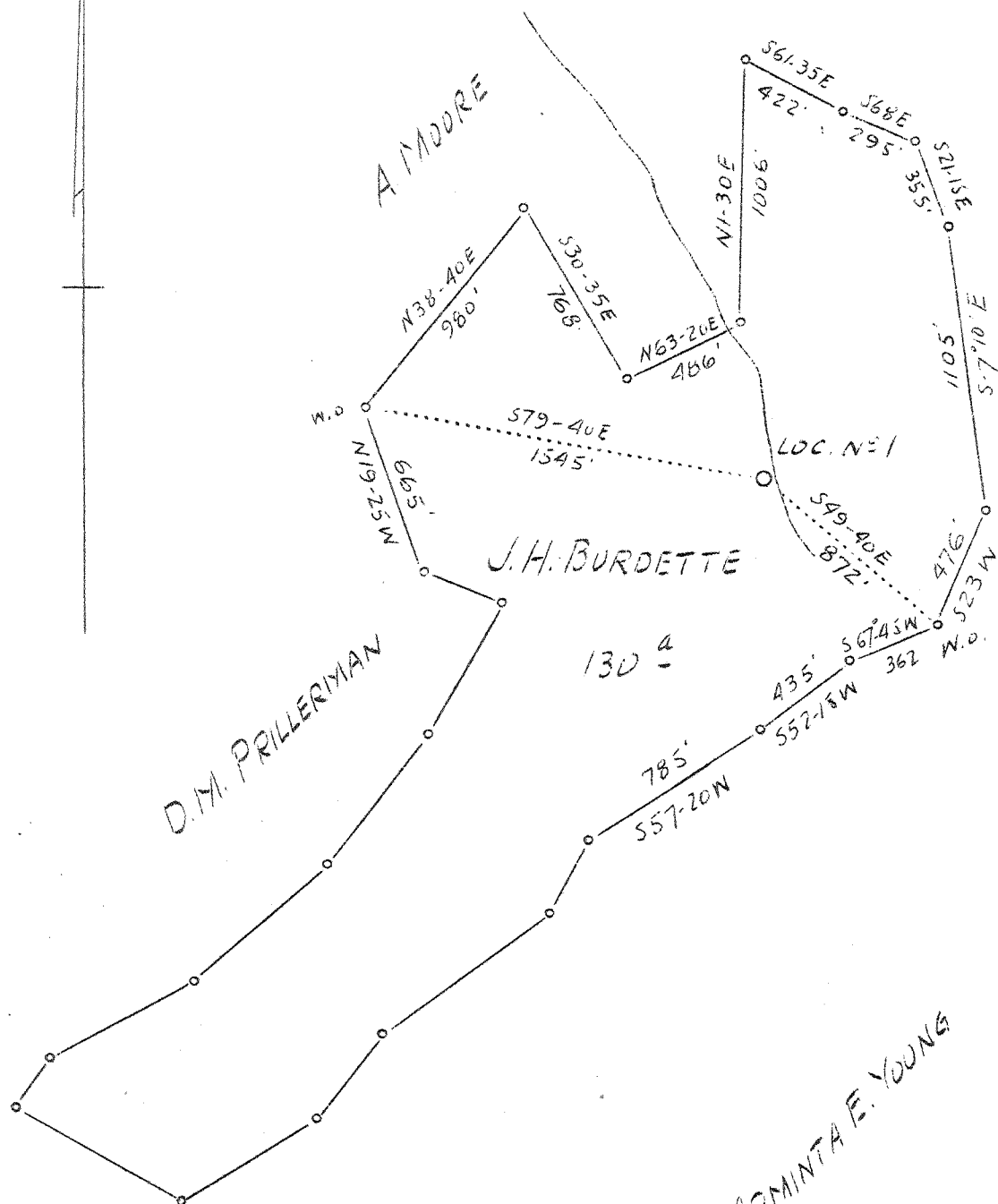


LATITUDE 38° 35'

LONGITUDE 81° 35'



D. M. PRILLERIMAN

J. H. BURDETTE

ARMINTA E. YOUNG

130 a

ABD

1.1 W
5.8 S

NEW LOCATION

Company	United Carbon Co.
Address	Charleston, W. Va.
Farm	J. H. Burdette
Acres	130
Lease No.	2320
Well (Farm) No.	One
Serial No.	772
Elevation (HP)	257.5 980-1145 7.5' top
Quadrangle	Kenna
County	Kanawha
District	Poca
Engineer	E. B. Wilson
Eng. Reg. No.	494
Date	August 26, 1938
Scale	1" = 660'

STATE OF WEST VIRGINIA
 Department of Mines
 OIL & GAS DIVISION
 Charleston

WELL LOCATION MAP

File No. KAN-579

x Denotes location of well on U. S. Topographic Maps, scale 1 to 62,500, latitude and longitude lines being represented by border lines as shown.

- Denotes one inch spaces on border line of original tracing.

WEST VIRGINIA DEPARTMENT OF MINES
OIL AND GAS DIVISION

W E L L R E C O R D

Permit No. Kan. 579
Kenne Quad.

Gas Well

Casing & Tubing

Company	United Carbon Co.	10	3/4	470	470
Address	Union Bldg., Chas., W. Va.	8 1/2		1775	1755
Farm	J.H. Burdette Acres 130	65/8		4837	4837
Location	Grapevine Creek	2			4943
Well No.	1---772				
District	Poca Kanawha County				
Surface	J.H. Burdette				
Mineral	J.H. Burdette				
Drilling Commenced	Oct. 4, 1938				
Drilling Completed	Jan. 12, 1939	8-5/8"	747'	11/17/38	
Date shot	Not shot	6-5/8"	225'	1/2/39	
Open Flow	38/10ths. Merc. in 6-5/8"				
Volume	8,403,000				
Rock Pressure	1300 lbs. 48 hrs.				
Salt Water	1195-45				

*80.75' top - CLA
1200 lbs
Seems OK - OKH*

Casing Cemented

Formation Color ^{Has} TOP Base Result Formation Color ^{Has} TOP Base Result

Clay	Yel.		0	12							
Sand			12	45							
Slate	Blue		45	65							
Rock	Red		65	175							
Sand			175	225							
Slate&Shells			225	258							
Rock	Red		258	345							
Sand			345	375							
Slate&Shells			375	435							
Sand			435	468							
Slate&Lime Shells			468	620							
Sand			620	700							
Slate&Shells			700	745							
Sand			745	765							
Slate&Shells			765	838							
Sand			838	890							
Slate	Black		890	900							
Slate&Shells Wh.			900	1014							
1st. Salt Sand			1014	1055							
Slate			1055	1060	(Water						
Salt Sand			1060	1384	1195 Hole						
Lime	Grey		1384	1400	Full)						
Slate			1400	1415	(Water						
Lime			1415	1445	1145-2						
Mason Sand			1445	1515	bailers)						
Slate			1515	1525							
Little Lime			1525	1545							
Slate			1545	1547							
Lime shells			1547	1555							
Pencil Cave			1555	1557							
Big Lime			1557	1733							
Inj. Sand			1733	1760							
Clate	White		1760	1820							
Lime	Blue		1820	1865							
Slate&Shells			1865	3385	G-2103						
Shale	Brown	H	3385	3430							
Sl. & Shells		H	3430	3700							
Shale	Brown		3700	3730							
Sl. & Shells			3730	3840							
Shale	Brown		3840	3980							
Lime shells			3980	4478							
Shale	Brown		4478	4715							
Slate	White		4715	4760							
Shale	Black		4760	4822							
Corn. Lime			4822	4933							
Oris. Sand			4933	4952							
Total Depth				4952	Gas-4939' to 4950'						