

LATITUDE 36° 35'

LONGITUDE 81° 35'

J. H. MILLER ETAL

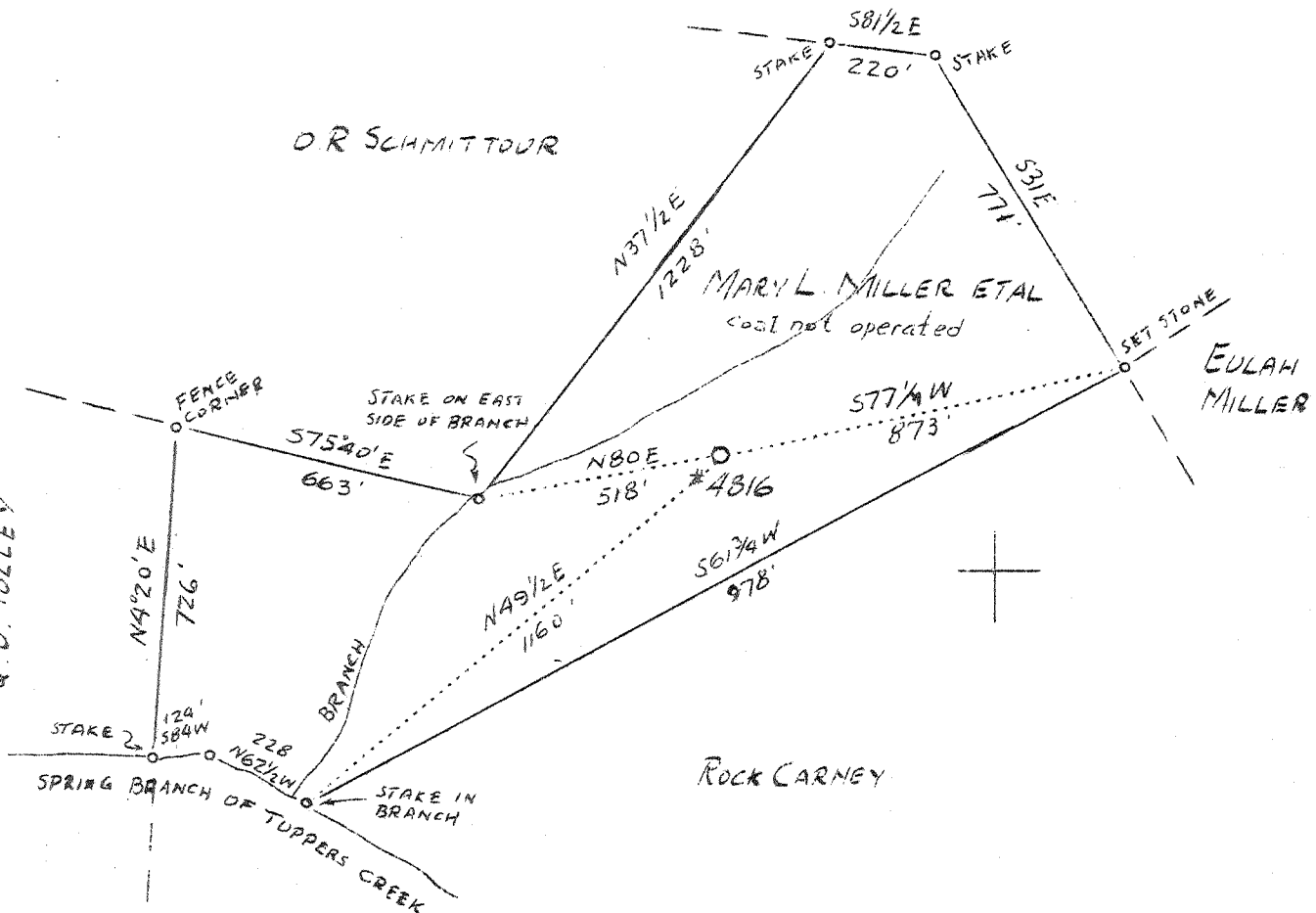
O. R. SCHMITT TOUR

MARY L. MILLER ETAL  
coal not operated

EULAH MILLER

ROCK CARNEY

Q. V. TOLLEY



ABD  
6/41

5.12 W  
5.25 S

NEW LOCATION

Company	United Fuel Gas Co.
Address	Charleston, W. Va.
Farm	Mary L. Miller, et al
Acres	32
Lease No.	42409
Well (Farm) No.	One
Serial No.	4816
Elevation (SP)	-
Quadrangle	Kenna <i>sc</i>
County	Kanawha
District	Poca
Engineer	G. A. Cunningham
Eng. Reg. No.	659
File No.	62 - 69
Date	-
Scale	1" = 400'

STATE OF WEST VIRGINIA  
Department of Mines  
OIL & GAS DIVISION  
Charleston

WELL LOCATION MAP

File No. KAN-580

x Denotes location of well on U. S. Topographic Maps, scale 1 to 62,500, latitude and longitude lines being represented by border lines as shown.

- Denotes one inch spaces on border line of original tracing.

WEST VIRGINIA DEPARTMENT OF MINES

OIL & GAS DIVISION

WELL RECORD

Permit No. Kan-580

Gas Well

Kenna Quad.

CASING & TUBING

Company	United Fuel Gas Co.	13	15	15
Address	Charleston, W. Va.	10	513	513
Farm	Mary L. Miller, et al ACRES 32	8-5/8	1834	1834
Location	Spring Br. of Tappers Creek	7	4856	4856
Well No.	4816 ELEV. 873.8			
District	Poca - Kanawha County			
Surface & Mineral Address	Mary L. Miller, et al Sissonville, W. Va.			
Drilling commenced	Oct. 6, 1938			
Drilling completed	Jan. 4, 1939			
Date shot	Not shot			
Open Flow	62/10ths Merc. in 7 inch			
Volume	12,293,000 c.f.			
Rock Pressure	1275 lbs. 48 hrs.			
Fresh water	745			
Salt Water	1202			

Formation	Color	Top	Base	Result	Formation	Color	Top	Base	Result
Surface		0	15		Slate & shells		3790	3900	
Slate		15	120		Brown shale		3900	4000	
Red Rock		120	160		White slate		4000	4535	
Blue Slate		160	180		Brown shale		4535	4760	
Red Rock		180	230		Gray lime		4760	4783	
Sand		230	288		Black shale		4783	4846	
Slate		288	330		Corniferous lime		4846	4949	
Sand		330	355		Oriskany sand		4949	4973	G 4960
Blue Slate		355	375		Total Depth			4973	G 4972
Red Rock		375	390						
Sand		390	436						
Blue Slate		436	466						
Sand		466	533						
Slate		533	560						
Sand		560	580						
Slate & shells		580	680						
Sand		680	757	W 745					
Black Slate		757	837						
Lime		837	867						
Slate & shells		867	1080						
Sand		1080	1121						
Slate		1121	1152						
Salt Sand		1152	1416	W 1202					
Slate		1416	1488						
Maxon Sand		1488	1565						
Slate		1565	1568						
Little Lime		1568	1600						
Lime shells		1600	1607						
Pencil cave		1607	1611						
Big Lime		1611	1747						
Injun		1747	1810						
Slate		1810	1820						
Lime		1820	1940						
Slate & shells		1940	2141						
Lime		2141	2175						
Slate		2175	2225						
Lime		2225	2311	G 2231					
Slate		2311	2315						
Lime		2315	2390						
Slate		2390	2400						
Lime		2400	2445						
Slate		2445	2453						
Lime		2453	2480						
Slate		2480	2485						
Lime		2485	2725						
Slate & shells		2725	3750						
Brown Shale		3750	3790						