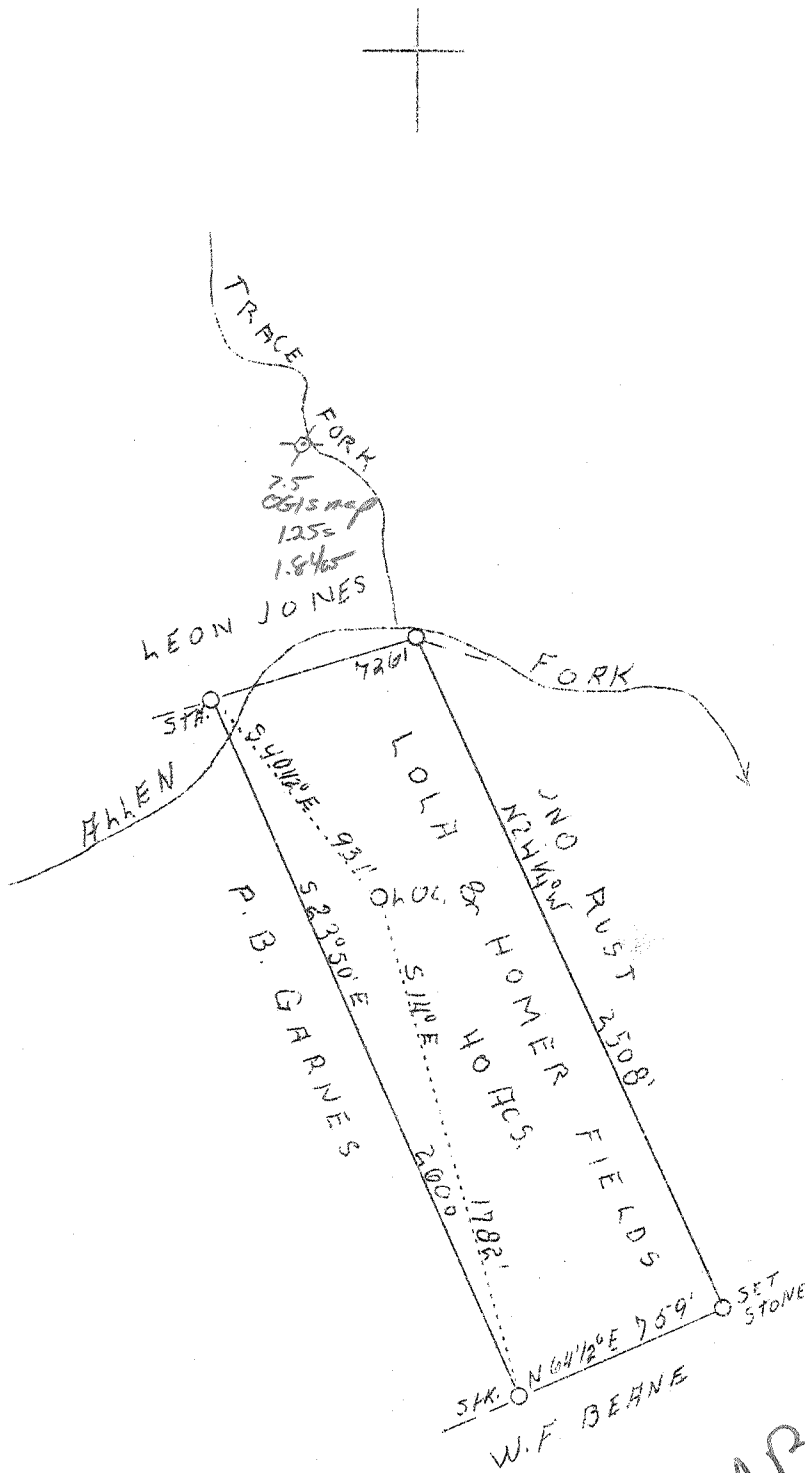


LATITUDE 38° 35'

LONGITUDE 81° 35'

81° 37' 30"



4.3 W  
1285

ABD  
7/43

New location

Company	Meigs Del. Co.
Address	1900 - 19th St., Parkersburg, W. Va.
Farm	Lola & Homer Fields
Tract	-
Acres	40
Well (Farm) No.	One
Elevation (SP)	712 (Stadia)
Quadrangle	Kenna SC.
County	Kanawha
District	Poca
Engineer	C. E. Krebs
Eng. Reg. No.	9
File No.	11.576
Date	August 16, 1938
Scale	1" - 660'

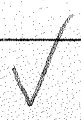
STATE OF WEST VIRGINIA  
 Department of Mines  
 OIL & GAS DIVISION  
 Charleston

WELL LOCATION MAP

File No. Kan-583

x Denotes location of well on U. S. Topographic Maps, scale 1 to 62,500, latitude and longitude lines being represented by border lines as shown.

- Denotes one inch spaces on border line of original tracing.



WEST VIRGINIA DEPARTMENT OF MINES

OIL & GAS DIVISION

WELL RECORD

Permit No. Kan-583

Gas Well

Kenn. Quad.

CASING & TUBING

Company	Joe Rubin	10	585
Address	1900-19th St., Parkersburg, W. Va.	8-1/4	1400
Farm	Homer Fields, et ux ACRES 40	6	1950
Location	Allons Fork		
Well No.	One ELEV. 702 (?)	No Packer	
District	Poca - Kanawha County		
Surface	Mr. & Mrs. Homer Fields, Sissonville, W. Va.	CASING CEMENTED:	
Mineral	Josephine Higginbotham Sissonville, W. Va.	4869' of 5-3/16	
Drilling commenced	Sept. 3, 1933	No Coal	
Drilling completed	Nov. 25, 1933		
Date shot	11-24-38 - depth 30'		
Open Flow	-		
Volume	- 942 Mcf - Vol <del>XVI</del>	No Fresh water	
Rock Pressure	-	No Salt Water	

Formation Color <sup>Mar</sup> TOP Base RESULT Formation Color <sup>Mar</sup> TOP Base RESULT

Rock	red		0	30	Slate		4135	4570
Slate	blue		30	65	Shale		4570	4795
Rock	red		65	100	Black Slate		4795	4852
Sand			100	105	Lime		4852	4961
Slate	blue		105	275	Sand		4961	
Rock	red		275	350				
Slate	blue		350	365	Open Flow before shot:			
Sand			365	375			4976 1/2	5.5M
Blue Rock			375	465			4978 3/4	
Red Rock			465	505			4979	
Blue Shale			505	520			4987	
Red			520	525			4991	No pay
Blue Shale			525	570			4994	No pay
Red Rock			570	585	10" pipe Gas 2" pipe:			
Slate			585	595			4966	85 tenths
Sand			595	620			4968	20 "
Slate			620	658			4969	24 "
Red			658	686			4970	48 "
Slate			686	714			4972	60 "
Sand			714	770			4973 1/2	87 "
Slate			770	790			4976 1/2	55 "
Sand			790	820				
Slate			820	835	Water at 1370 Feet			
Sandy Shale			835	940	Hole full water at 1430 feet			
Sand			940	975				
Slate			975	985				
Sand			985	995				
Slate			995	1250				
Sand			1250	1260				
Slate			1260	1282				
Sand			1282	1287				
Slate			1287	1295				
Sand			1295	1625				
Slate			1625	1685				
Sand			1685	1695				
Pencil			1695	1700				
Lime			1700	1850				
Sand			1850	1920				
Shale			1920	2050				
Slate			2050	2316				
Coffee Shale			2316	2321				
Berea Sand			2321	2325				
Slate & Shells			2325	3515				
Brown Shale			3515	3570				
Slate & Shells			3570	3810				
Brown Shale			3810	3880				
Slate			3880	4055				
Shale Brown			4055	4135				

Worth less  
Same log for two wells  
583 + 584