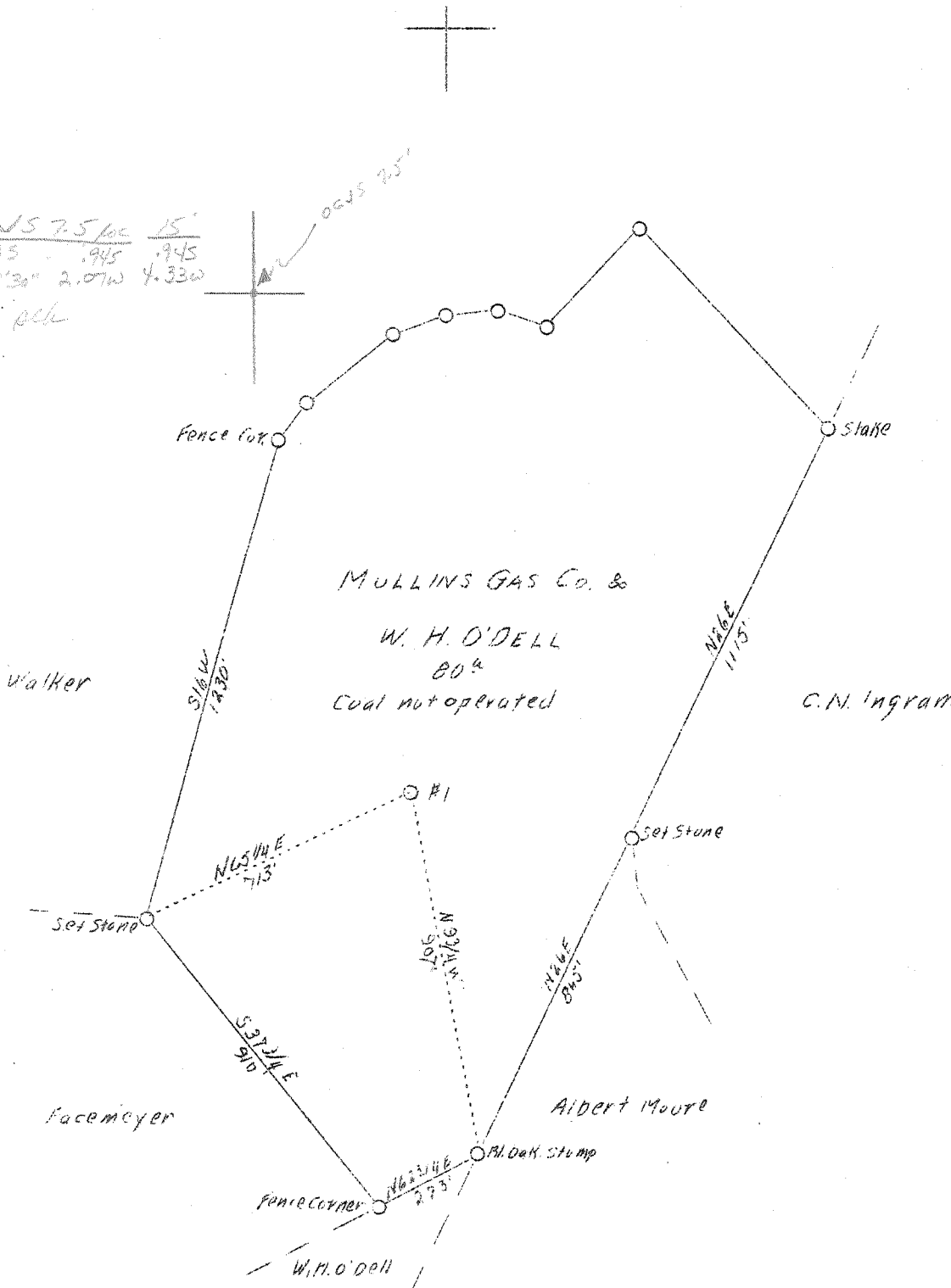


LATITUDE 38° 35'

LONGITUDE 81° 30'

$\frac{00NS 7.5 \text{ loc } 15'}{38^{\circ} 35' - .945 \quad .945}$
 $\frac{81^{\circ} 32' 30'' - 2.07W \quad 4.33W}{}$

ack



New location

4.3 W
.85 S

Company	Mullins Gas Co.
Address	Charleston, W. Va.
Farm	Mullins Gas Co. & W.H.O'Dell
Acres	80
Well (Farm) No.	1
Elev. (Spirit Level)	864 Ground
Quadrangle	Kanawha S, E
District	Poca
Eng.	G.A. Cunningham
Eng. Reg. No.	659
File No.	64 - 73
Date	Sept. 22, 1938
Scale	1" - 400'

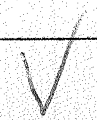
STATE OF WEST VIRGINIA
Department of Mines
OIL AND GAS DIVISION
Charleston

WELL LOCATION MAP

File No. KOM-585 D

x Denotes location of well on U.S. Topographic Maps, scale 1 to 62,500, latitude and longitude lines being represented by border lines as shown.

- Denotes one inch spaces on border line of original tracing.



WEST VIRGINIA DEPARTMENT OF MINES
OIL & GAS DIVISION

WELL RECORD

Permit No. Kan-585

Kenna Quad.

Gas Well

CASING & TUBING

Company	Mullins Gas Company	13" Wood conductor
Address	507 Kanawha Bk. & Trust Bldg., Charleston, W. Va.	10 673 673
Farm	Berry-Odell ACRES 103	8-5/8 1942 1942
Well No.	One ELEV. 864	7 5023 5023
District	Poca - Kanawha County	2 tubing 5138
Surface & Mineral Address	W. H. Odell, et al 504 Columbia Blvd., West Charleston, W. Va.	Parmaco Packer cemented in with 25 bags. Perf. bot. 7'
Drilling commenced	10-11-38 - completed 12-15-38	
Shot	Not shot	5023' of 7"OD casing cemented
Open Flow	84/10ths Merc. in 7" O.D. 24#	
Volume	4,552,000 c.f.	
Rock Pressure	1775 lbs. hrs.	
Salt Water	1410'	

Formation	Color	Har	To P	Base	Result	Formation	Color	Har	To P	Base	Result
Red mud			0	16							
Red Rock			16	230							
Blue Slate			230	280							
Sand			280	300							
Red Rock			300	310							
Slate			310	330							
Red Rock			330	340							
Slate			340	360							
Red Rock			360	650							
Sand			650	675							
Slate			675	780							
Sand			780	830							
Slate			830	875							
Sand			875	915							
Slate			915	935							
Sand			935	950							
Slate			950	978							
Sand			978	1020							
Slate			1020	1050							
Sand			1050	1145							
Slate			1145	1260							
Sand			1260	1280							
Slate			1280	1325							
Salt Sand			1325	1690	Salt Water 1410'						
Little Lime			1690	1710							
Big Lime			1710	1868							
Injun Sand			1868	1924							
Slate			1924	1938							
Lime			1938	1953							
Slate & Shells			1953	2330							
Berea Shells			2330	2365							
Slate & Shells			2365	3535	Small show gas @ 3220'						
Brown Shale			3535	3575							
Slate & Shells			3575	3833							
Brown Shale			3833	3865	Small show Gas @ 3830'						
Slate & Shell			3865	4000							
Brown Shale			4000	4150							
White Slate			4150	4690	STEEL LINE RUN 5114'						
Brown Shale			4690	4920	Gas 5126'						
White Shale			4920	4950	(36/10 Merc.)						
Brown Shale			4950	4980	5117 Top of Sand						
Black Shale			4980	5008	5126 Top of pay to 5141'						
Corniferous			5008	5117	(84/10 merc. in 7" OD)						
Oriskany			5117	5141	Total Depth						