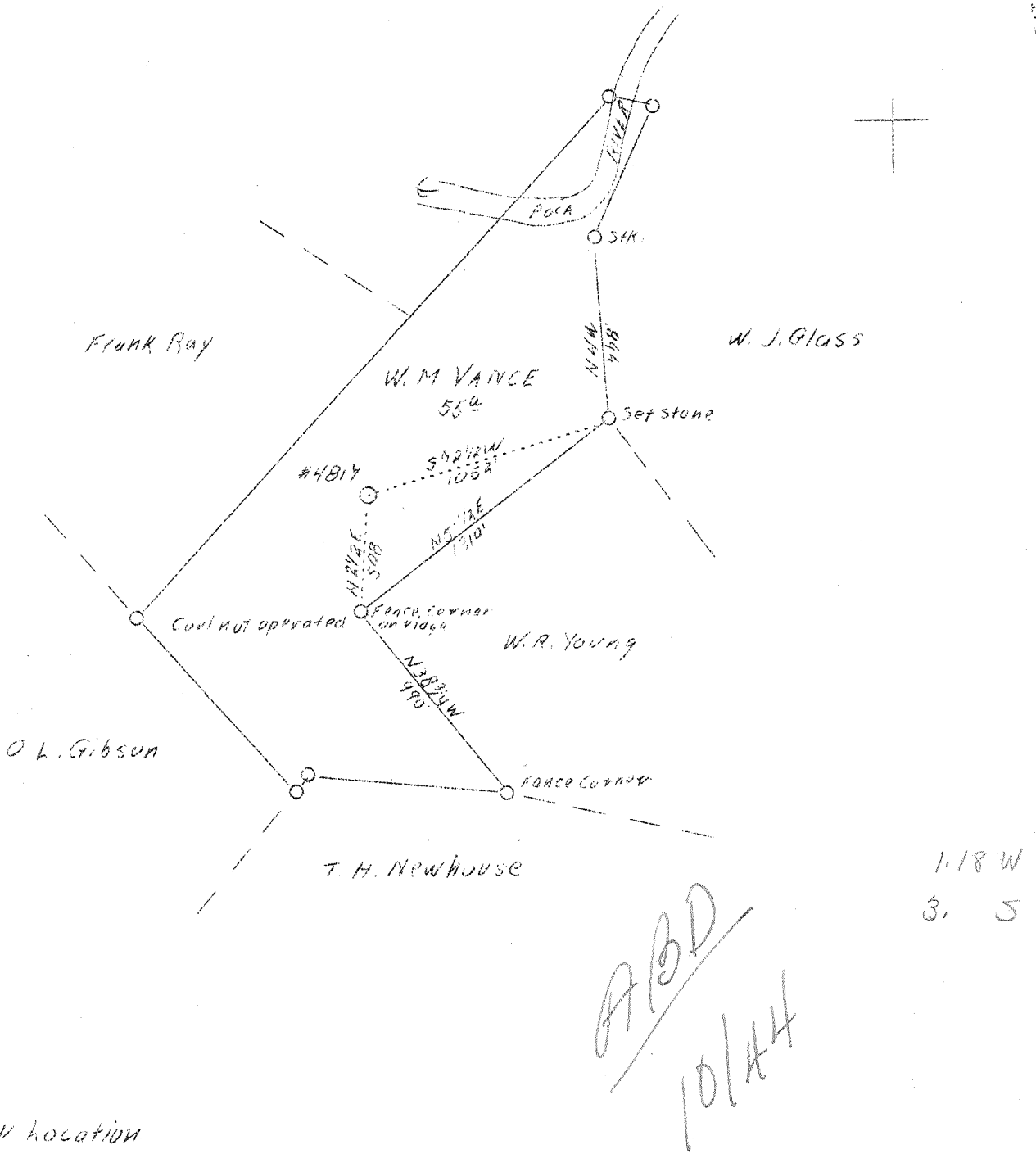


M

LATITUDE 38° 35'

LONGITUDE 81° 35'



New location

ABD
10/14/44

1.18 W
3.5

Company	United Fuel Gas Co.
Address	Charleston, W.Va.
Farm	W.M. Vance
Acres	55
Lease No.	42514
Well (Farm) No.	1
Serial No.	4817
Quadrangle	Kenna <i>SL</i>
County	Kanawha
District	Poca
Eng.	G.A. Cunningham
Eng. Reg. No.	659
File No.	62 - 71
Date	Sept. 26, 1938
Scale	1" - 660'

STATE OF WEST VIRGINIA
 Department of Mines
 OIL AND GAS DIVISION
 Charleston

WELL LOCATION MAP

File No. MON-586

x Denotes location of well on U.S. Topographic Maps, scale 1 to 62,500, latitude and longitude lines being represented by border lines as shown.

- Denotes one inch spaces on border line of original tracing.



WEST VIRGINIA DEPARTMENT OF MINES

OIL & GAS DIVISION

WELL RECORD

Permit No. Kan-586

Gas Well

Kenna Quad.

CASING & TUBING

Company	United Fuel Gas Co.,	13	16	16
Address	Charleston, W. Va.	10	692	692
Farm	W. M. Vance ACRES 55	8-5/8	1944	1944
Location	Poca River	7	4995	4995
Well No.	4817 ELEV. 917.7			
District	Poca - Kanawha County			
Surface & Mineral Address	T. W. Armstrong, et al Charleston, W. Va.			
Drilling commenced	Dec. 15, 1938			
Drilling completed	March 29, 1939			
Date Shot	Not shot			
Open Flow	40/10ths Merc. in 7" O.D.			
Volume	9,874,000 c.f.			
Rock Pressure	1150 lbs. 48 hrs.			
Salt Water	1340 and 1490			

Formation Color ^{Mar}/_S TOP Base Result Formation Color ^{Mar}/_S TOP Base Result

Formation Color	^{Mar} / _S	TOP	Base	Result	Formation Color	^{Mar} / _S	TOP	Base	Result
Red Rock		0	75						
Blue Slate		75	100						
Red Rock		100	180						
Sand		180	220						
Red Rock		220	520						
Sand		520	530						
Red Rock		530	645						
Sand		645	690						
Slate & Shells		690	700						
Sand		700	770						
Slate		770	802						
Sand		802	837						
Slate		837	847						
Sand		847	950						
Slate		950	975						
Sand		975	1006						
Slate		1006	1140						
Sand		1140	1158						
Slate		1158	1218						
Sand		1218	1238						
Slate		1238	1250						
Salt Sand		1250	1679	W 1340					
Little Lime		1679	1700	W 1490					
Big Lime		1700	1862						
Injun Sand		1862	1935						
Slate		1935	1937						
Shells		1937	1946						
Slate		1946	1956						
Sand		1956	2000						
Slate & Shells		2000	2339						
Berea Sand		2339	2345						
Slate & Shells		2345	3550						
Brown Shale		3550	3600						
Slate & Shells		3600	4000						
Brown Shale		4000	4120						
White Slate		4120	4675						
Brown Shale		4675	4850						
White Slate		4850	4890						
Brown Shale		4890	4979						
Corniferous Lime		4979	5095						
Oriskany Sand		5095	5113	Gas 5099-5108					
Total Depth			5113						