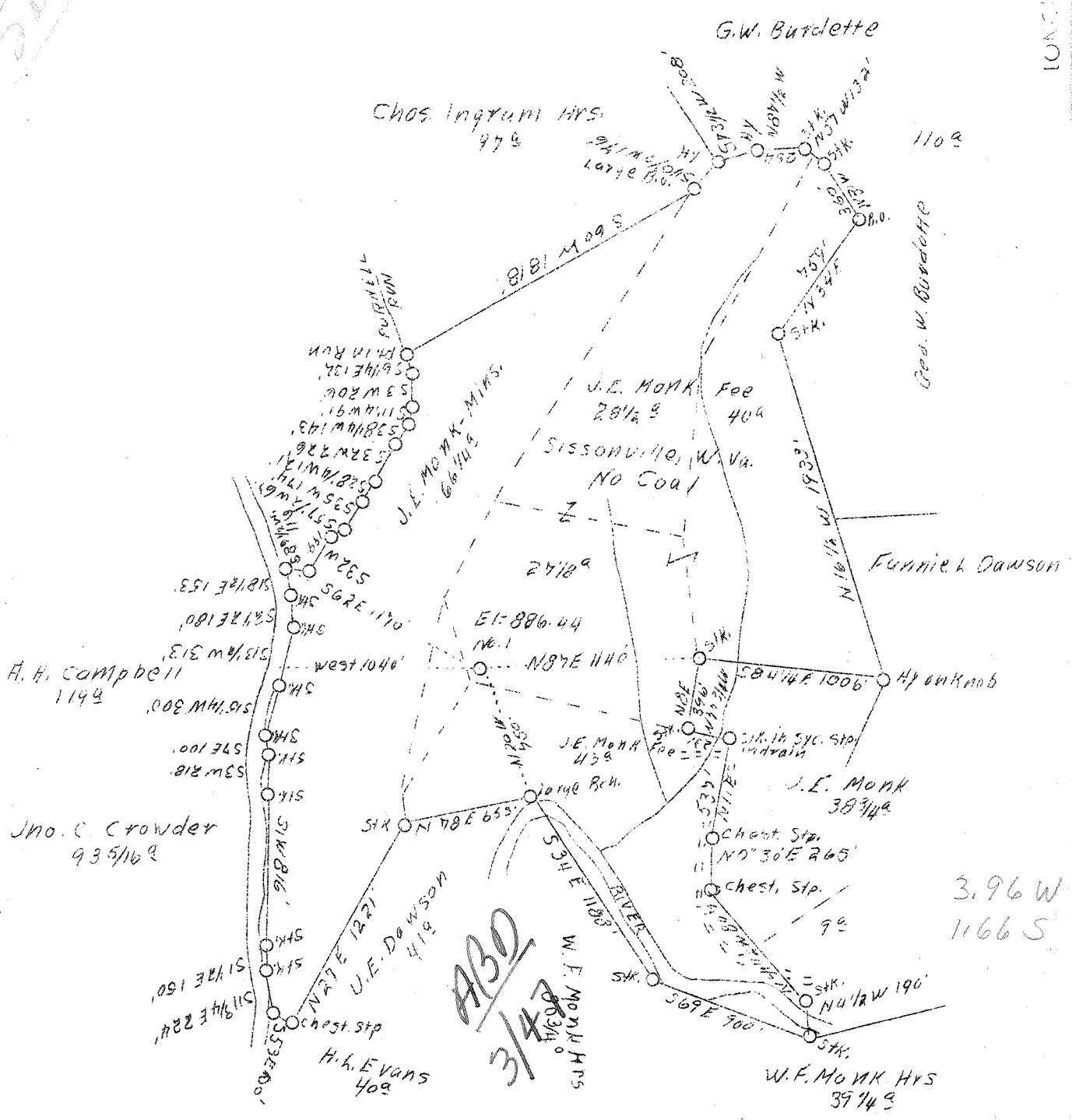


LATITUDE 38° 35'

LONGITUDE 81° 30'

*Sorted for file*



New location P. 494 8 NW (I-5)

Company	South Penn Oil Co.
Address	411 Seventh Ave. Pittsburgh, Pa.
Farm	J.E. Monk
Acres	215
Lease No.	79611
Well (Farm) No.	1
Quadrangle	Kenna S.E.
County	Kanawha
District	Poca
Eng.	E.C. Tabler
Date	Sept. 16, 1938
Scale	1" - 800'

STATE OF WEST VIRGINIA  
Department of Mines  
OIL AND GAS DIVISION  
Charleston

WELL LOCATION MAP  
File No. Kan-587

x Denotes location of well on U.S. Topographic Maps, scale 1 to 62,500, latitude and longitude lines being represented by border lines as shown.

- Denotes one inch spaces on border line of original tracing.

560 W 54 199 B 1 W

✓ Deep Well

WEST VIRGINIA DEPARTMENT OF MINES

OIL & GAS DIVISION

WELL RECORD

Permit No. Kan-587

Gas Well

Kanna Quad.

CASING & TUBING

Company	South Penn Oil Co.	16	17-9 (Pulled 5-10)
Address	411-7th Ave., Pgh. Pa.	13-3/8	506-10 " 14-4
Farm	J. E. Monk ACRES 215	10	1689-6 " 12-5
Location	Poca River		610-8
Well No.	One <u>ELEV. 886.44</u>	8-5/8	1931-6 " 5-2
District	Poca - Kanawha County	7	5033-5
Surface & Mineral	J. E. Monk, Jissonville, W. Va.		
Drilling commenced	Oct. 24, 1938	Packer - See Below	
Drilling completed	Feb. 20, 1939		
Date shot	2/20/39 - Depth 5127-5140	CASING CEMENTED:	
Open Flow	16/10ths Water in 7" O.D.	Size	Feet
Volume	1,921,000 c.f.	10	1673
Rock Pressure	1560 lbs. 24 hrs.	8-5/8	1921
Fresh Water	-	7	5012
Salt Water	1310, 1360-1744		

Formation Color	Hor	Top	Base	Result	Formation Color	Hor	Top	Base	Result
Clay		0	14		Corniferous		4993	5104	
Sand		14	109		Oriskany		5104	5140	
Red Rock		109	130		Lime - 0		5140	5142	
Slate		130	170		Total Depth			5142	
Sand		170	227		Salt Water	1310	2 blr. pr. hr.		
Red Rock		227	280		Salt Water	1360	hole full		
Lime		280	320		Water	1741-44	1/2 blr. pr. hr.		
Red Rock		320	400		Gas 1741-44	4/10 W. 2" opg.	95,000 c.f.		
Slate		400	460		Reduced to	5/10 W. 1" opg.	46,100 c.f.		
Red Rock		460	475		Gas 4340	Insf. to test			
Slate		475	490		Gas 5128-30	50/10 W. 2" opg.	(337,000 c.f.)		
Red Rock		490	497		" 5130-32	8/10 W. 7" 20# Csg.	(1209,000 cf)		
Lime		497	510		" 5136 16/10 W. 7" 20# Csg.	(1921,000 c.f.)			
Red Rock		510	574						
Grey Slate		574	635						
Sand		635	664						
Slate		664	666						
Sand		666	835						
Slate		835	850		PACKER RECORD:				
Sand		850	920		Steel Shoe	10-3/4"	1673'		
Black Slate		920	950		do	8-5/8	1921		
Sand		950	1080		do	7" OD	5012		
Slate		1080	1100						
Black Slate		1100	1195						
Slate&Shell		1195	1280						
Salt Sand		1280	1620		4993	5104	5140		
Slate		1620	1622		886	886	986		
Little Lime		1622	1633		4107	4218	4254		
Pencil Conc		1633	1656						
Big Lime		1656	1800						
Big Injun		1800	1880						
Slate&Shells		1880	1920						
Lime		1920	1934						
Slate&Shells		1934	2340						
Lime Shells		2340	2520						
Slate&Shells		2520	2620						
Berea Grit		2620	2623						
Slate&Shells		2623	3447	300' ? Too Deep.					
Lime Shells		3447	3582						
Slate&Shells		3582	3995						
Brown Shale		3995	4194						
White Slate		4194	4635						
Brown Shale		4635	4886						
White Slate		4886	4916						
Black Slate		4916	4955						
Lime Shells		4955	4957						
Black Slate		4957	4993						