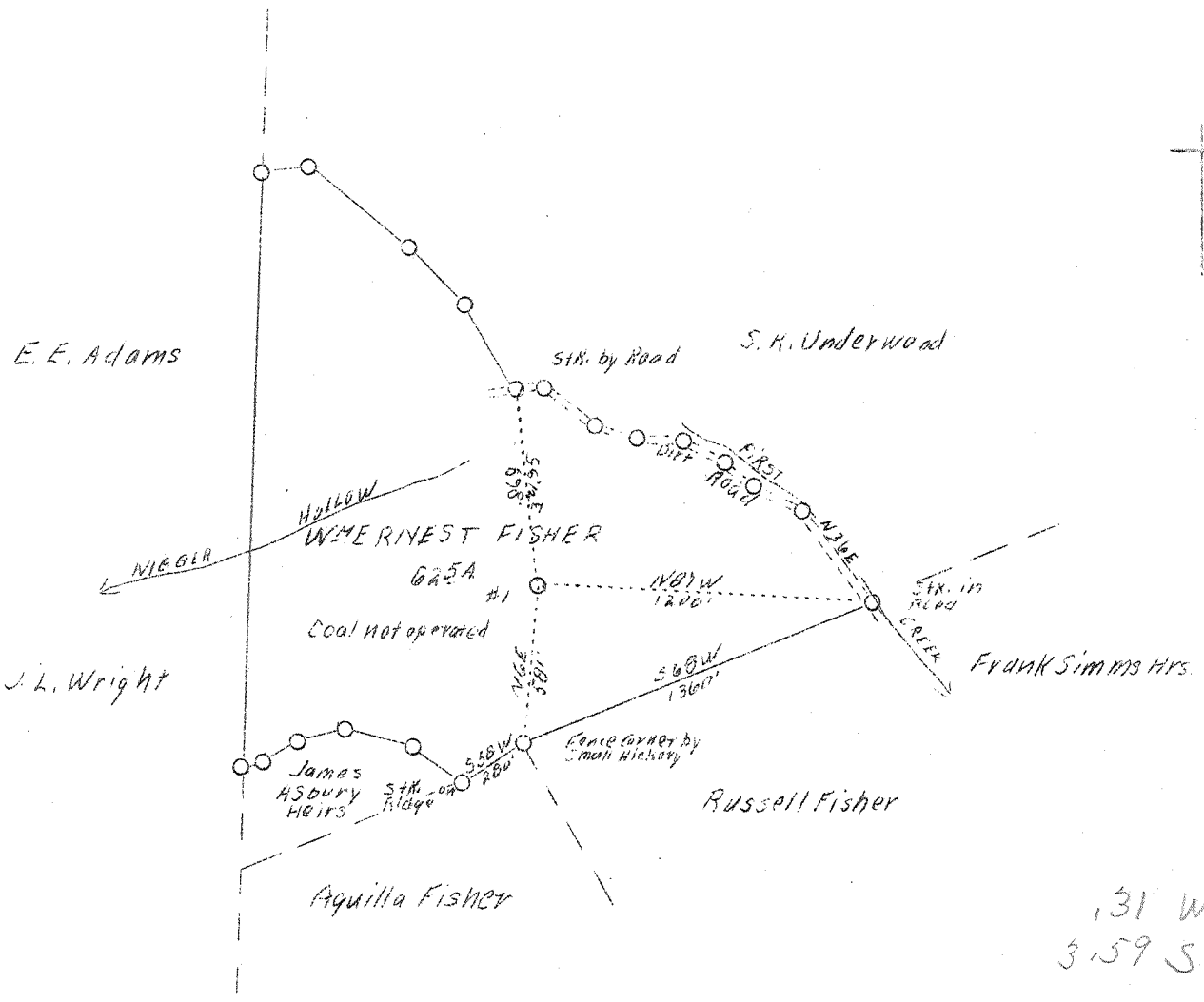


M

LATITUDE 38° 35'

LONGITUDE 81° 40'



New location

ASD.
1/49

Company	Mullins Gas Co.	STATE OF WEST VIRGINIA
Address	Charleston, W. Va.	Department of Mines
Farm	Wm. Ernest Fisher	OIL & GAS DIVISION
Acres	62.5	Charleston
Well (Farm) No.	One	WELL LOCATION MAP
Elevation (SP)	-	File No. <u>RAW-588 D</u>
Quadrangle	Kenna S.W	x Denotes location of well on U. S. Topo-
County	Kenawha	graphic Maps, scale 1 to 62,500, latitude
District	Poca	and longitude lines being represented by
Engineer	G. A. Cunningham	border lines as shown.
Eng. Reg. No.	659	- Denotes one inch spaces on border line
File No.	58 - 71	of original tracing.
Date	Sept. 30, 1938	
Scale	1" = 660'	

✓

WEST VIRGINIA DEPARTMENT OF MINES

OIL & GAS DIVISION

WELL RECORD

Permit No. Kan-588

Gas well

Kenna Quad.

CASING & TUBING

Company	Mullins Gas Co.	16 Wood conductor
Address	Box 28, Charleston, W. Va.	10-3/4 668 668
Farm	Wm. Ernest Fisher ACRES 65	8-5/8 1936 1936
Location	Pocataligo River	
Well No.	One ELEV. 999	Packer - Spang Anchor
District	Poca - Kanawha County	Size - 8 1/2 x 10 x 16
Surface	Wm. Ernest Fisher, et al Sissonsville, W. Va.	Depth set - 1919
Mineral	Wm. E. Fisher, W.H.O'Doll & Mullins Gas Co., Charleston, W.Va.	17" Anchor perf.
Commenced	Nov. 10, 1938	
Completed	Dec. 23, 1938	
Date shot	not shot	
Open Flow	49/10ths Merc. in 4 inch	
Volume	4,400,00	
Rock Pressure	650 lbs. 48 hrs.	

Formation Color ^{ft} Top Base Result Formation Color ^{ft} Top Base Result

Formation	Color	Top	Base	Result	Formation	Color	Top	Base	Result
Soil		00	6						
Red Rock		6	100						
Mountain Sand		100	130						
Red Rock		130	400						
Blue Slat		400	500						
Red Rock		500	640						
Sand		640	675						
Blue Slat		675	709						
Red Rock		709	738						
Sand		738	765						
Red Rock		765	775						
Blue Slat		775	808						
Sand		808	865						
Slate		865	890						
Sand		890	940						
Slate		940	950						
Gray Lime		950	975						
White Slat		975	985						
Sand		985	1080						
Slate & Shells		1080	1370						
Gas Sand		1370	1428						
Break		1428	1435						
Salt Sand		1435	1797	Water 1515	Holefull 1540				
Break		1797	1800						
Maxon Sand		1800	1848						
Little Lime		1848	1871						
Pencil Cave		1871	1873						
Big Lime		1873	1936						
Total Depth			1936						

15 feet of 8-5/8 28# casing perforated with 30 3/4-inch holes. Casing coupling faced for shoe on bottom of perforation.

Well drilled into gas in Big Lime - ten inch hole, full of water - blowed water out of hole and continued to spray same until 8-5/8 run and well shut in.

Well first test gauged 9 million, after blowing open 24 hours. Well shut in after about a week at 49/10 M in 4"

WEST VIRGINIA DEPARTMENT OF MINES
OIL & GAS DIVISION
W E L L R E C O R D

Permit No. Kan-588-D
Kanna Quad.

Gas Well

		CASING & TUBING
Company	Mullins Gas Company	10-3/4 668
Address	Box 28, Charleston, W. Va.	8-5/8 2104
Farm	Wm. Ernest Fisher ACRES 65	7 5059
Location	Pocataligo River	
Well No.	1 ELEV. 990*	Packer - 8-1/4 Casing
District	Poca - Kanawha County	Shoe
Surface	Wm. Ernest Fisher, et al	
Address	Sissonsville, W. Va.	CASING CEMENTED:
Mineral	Wm. E. Fisher, W. H. O'Dell & Mullins Gas Company	6-5/8" 75 sacks;
	Charleston, W. Va.	7" 25 "
Address	Charleston, W. Va.	
Commenced	Nov. 10, 1938 (Orig.)	
Completed	Jan. 30, 1940	
Shot	1/31/40 - Depth 5147 1/2-5185	
Open Flow	28/10ths Water in 7" inch	
Volume	2,220,000 c.f.	
Rock Pressure	1250 lbs. 24 hrs.	
Water	-	

EM ✓ MAR 17 1940

*Elev. 999 in previous record incorrect.

Total depth original drilling 1936 feet - 63 ft. in Big Line
(Top of Big Line 1873)
Following is log of deeper drilling:

363

Big Line	1936	2037
Big Injun	2037	2085
Slate	2085	2100
Lime Shell	2100	2242
Slate	2242	2430
Lime Shells	2430	2488
Brown Shale	2488	2510
Berea Sand	2510	2520
Lime Shells	2520	3030
Slate&Shells	3030	3730
Brown Shale	3730	2784
Lime Shells	2784	4075
Brown Shale	4075	4320
White Slate	4320	4790
Brown Shale	4790	4963
Blue Shale	4963	5000
Black Shale	5000	5044
Corniferous Lime	5044	5146
Oristany	5146	

	Gas 5146-5148	417 M.C.F.
	" 5151-5156	1963 M.C.F.
Total Depth (S.L.M)	5186	Test 5159 1196 M.C.F.
		Gas 5164-5167 1525 M.C.F.
		Test 5169 1196 M.C.F.
		Gas 5176-5178 1583 M.C.F.
		Test 5183 1037 M.C.F.
		Gas 5184-5186 1404 M.C.F.
		Test - 65 minutes after shot:
		28/10 Water in 7" (24#)