

New Location
 Drill Deeper
 Abandonment 9-21-78

Company Jackson Development Company, Inc.
 Address P.O. Box 498, West Hamlin, W. Va, 2552
 Farm J.H. BURDETTE ET AL.
 Tract _____ Acres 266 Lease No. WV 284
 Well (Farm) No. ONE Serial No. O-35
 Elevation (Spirit Level) 636.6
 Quadrangle CHARLESTON NC
 County KANAWHA District POCA
 Engineer Robert S. Hyde
 Engineer's Registration No. 646
 File No. 3 Drawing No. W.O. 245
 Date OCTOBER 4, 1938 Scale 1 INCH = 500 FEET

STATE OF WEST VIRGINIA
 DEPARTMENT OF MINES
 OIL AND GAS DIVISION
 CHARLESTON

WELL LOCATION MAP
 FILE NO. Kan-590-R-P

+ Denotes location of well on United States Topographic Maps, scale 1 to 62,500, latitude and longitude lines being represented by border lines as shown.

OCT 17 1978

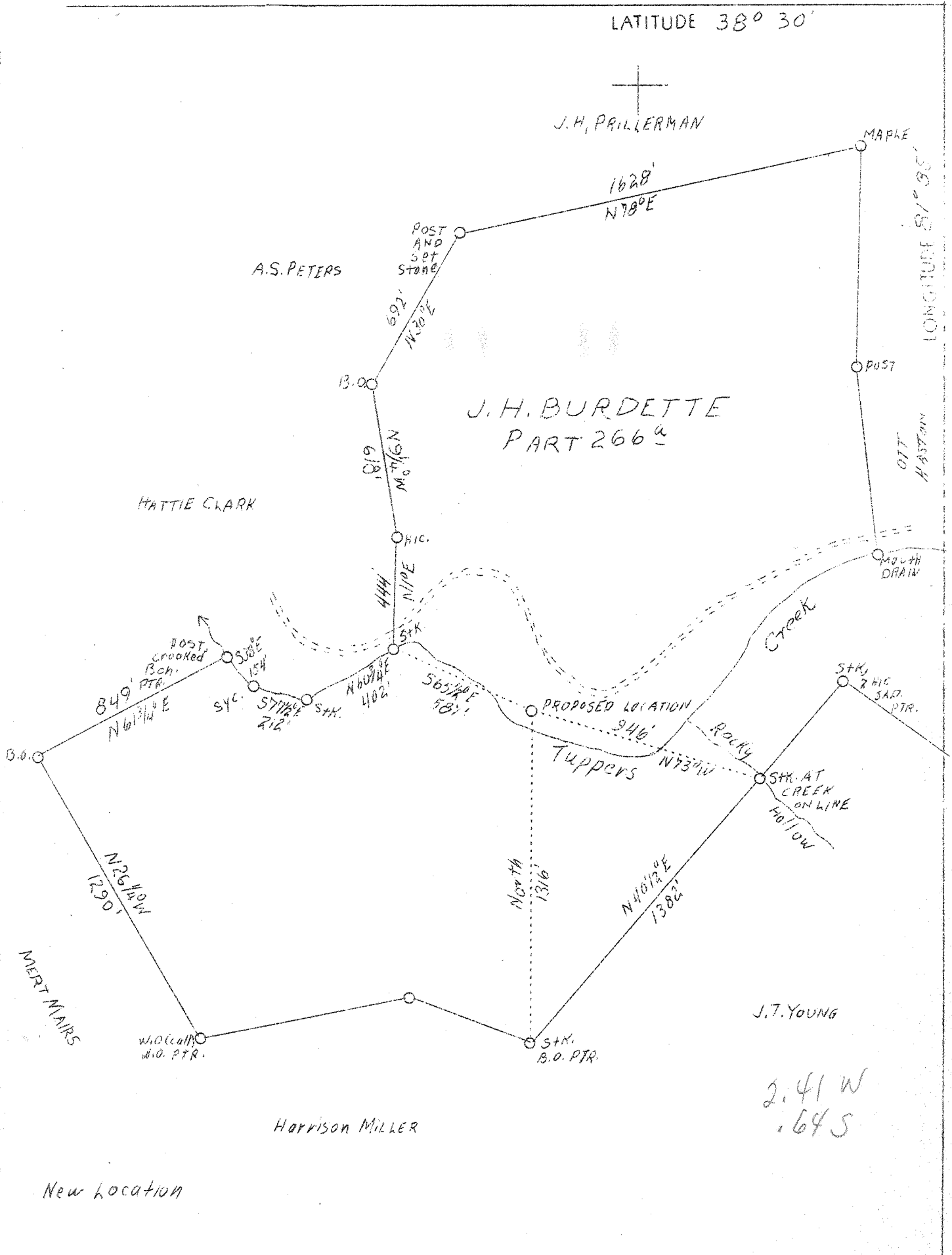
- Denotes one inch spaces on border line of original tracing.

47-039

Deep Well

LATITUDE 38° 30'

J. H. PRILLERMAN



| | |
|-----------------|---|
| Company | West Virginia Gas Corp., |
| Address | 401 Union Building, Charleston, W. Va. |
| Farm | J. H. Burdette, et al |
| Acres | 266 |
| Lease No. | W 284 |
| Well (Farm) No. | One |
| Serial No. | 0-35 |
| Elevation (SP) | 636.6 |
| Quadrangle | Charleston N. W. |
| County | Kanawha |
| District | Poca |
| Engineer | Robert S. Hyde |
| Eng. Reg. No. | 646 |
| File No. | 3 - Drawing No. W.O. 245 |
| Date | October 4, 1938 |
| Scale | 1" - 500' |

STATE OF WEST VIRGINIA
 Department of Mines
 OIL & GAS DIVISION
 Charleston

WELL LOCATION MAP

File No. KAN-590

x Denotes location of well on U. S. Topographic Maps, scale 1 to 62,500, latitude and longitude lines being represented by border lines as shown.

- Denotes one inch spaces on border line of original tracing.

6-6-192

WEST VIRGINIA DEPARTMENT OF MINES

OIL & GAS DIVISION

WELL RECORD

Permit No. Kan-590

Gas Well

Charleston N. W. Quad.

CASING & TUBING

| | | | |
|--------------------|---|------------------|------------------------------|
| Company | W. Va. Gas Corp., | 14 OD | 46-11 |
| Address | 401 Union Bldg., Charleston, W. Va. | 10 OD | 403-7 pulled |
| Farm | J. H. Burdette et al ACRES 266 | 8-5/8OD | 1646-5 |
| Location | Tuppers Creek | 5 1/2 OD | 4664-1 |
| Well No. | 1, Serial 0-35 ELEV. 636.6 SL | 2 | 4754-5 |
| District | Poca - Kanawha County | | |
| Surface | J. H. Burdette, Legg, W. Va. | Perf. top - | 4730 |
| Mineral | J. H. Burdette, E. S. Bock, Sr., & W. O. Ziebold, Charleston, W. Va. | " bot.- | 4735 |
| Drilling commenced | 10-13-38 - Completed 1-13-39 | CASING CEMENTED: | |
| Open Flow | 42/10ths Water in 5 1/2" 1st pay | 5 1/2" - | 40 bags |
| | 10/10ths Merc. in 5 1/2" 2nd pay | 8-5/8" - | 110 bags & 2 bags aquagel |
| Volume | 4,660,000 c.f. | | |
| Rock Pressure | 1510 lbs. 21 hrs. | | |
| Fresh Water | 75 | | |
| Salt Water | 940 and 975 | | |

Formation Color ^{Has} Top Base Result Formation Color ^{Has} Top Base Result

| Formation | Color | Has | Top | Base | Result | Formation | Color | Has | Top | Base | Result |
|------------------|-------|-----|------|------|-------------|--------------|-------|-----|-----|------|--------|
| Quick Sand | | | 0 | 21 | Big Water | 75 | | | | | |
| Blue Mud | | | 21 | 34 | Little S.W. | 940 | | | | | |
| Red Rock | | | 34 | 73 | Big Salt | W. 975 | | | | | |
| Blue Sand | | | 73 | 83 | | | | | | | |
| White Slate | | | 83 | 170 | Gas pay | 4713 to 3721 | | | | | |
| Sand | | | 170 | 180 | " " | 4732 to 4733 | | | | | |
| Shale | | | 180 | 210 | | | | | | | |
| Sand | | | 210 | 253 | | | | | | | |
| Shale | | | 253 | 418 | | | | | | | |
| Sand | | | 418 | 508 | | | | | | | |
| Slate & Shells | | | 508 | 593 | | | | | | | |
| Sand | | | 593 | 623 | | | | | | | |
| Slate&Shells | | | 623 | 835 | | | | | | | |
| Sand | | | 835 | 885 | | | | | | | |
| Slate | | | 885 | 900 | | | | | | | |
| Salt Sand | | | 900 | 1187 | | | | | | | |
| Slate | | | 1187 | 1263 | | | | | | | |
| Maxon | | | 1263 | 1355 | | | | | | | |
| Little Lime | | | 1355 | 1379 | | | | | | | |
| Pencil Cave | | | 1379 | 1383 | | | | | | | |
| Big Lime | | | 1383 | 1483 | | | | | | | |
| Slate | | | 1483 | 1487 | | | | | | | |
| Big Lime | | | 1487 | 1540 | | | | | | | |
| Slate | | | 1540 | 1543 | | | | | | | |
| Big Injun | | | 1543 | 1589 | | | | | | | |
| Slate | | | 1589 | 1600 | | | | | | | |
| Black Lime | | | 1600 | 1710 | | | | | | | |
| Slate & Shells | | | 1710 | 2003 | | | | | | | |
| Berea Grit | | | 2003 | 2015 | | | | | | | |
| Slate&Shells | | | 2015 | 3324 | | | | | | | |
| Brown Shale | | | 3324 | 3559 | | | | | | | |
| White Shale | | | 3559 | 3690 | | | | | | | |
| Brown Shale | | | 3690 | 3864 | | | | | | | |
| White Shale | | | 3864 | 4480 | | | | | | | |
| Brown Shale | | | 4480 | 4550 | | | | | | | |
| White Shale | | | 4550 | 4570 | | | | | | | |
| Brown Shale | | | 4570 | 4600 | | | | | | | |
| Corniferous Lime | | | 4600 | 4705 | | | | | | | |
| Oriskany | | | 4705 | 4740 | | | | | | | |
| Total Depth | | | | 4740 | | | | | | | |