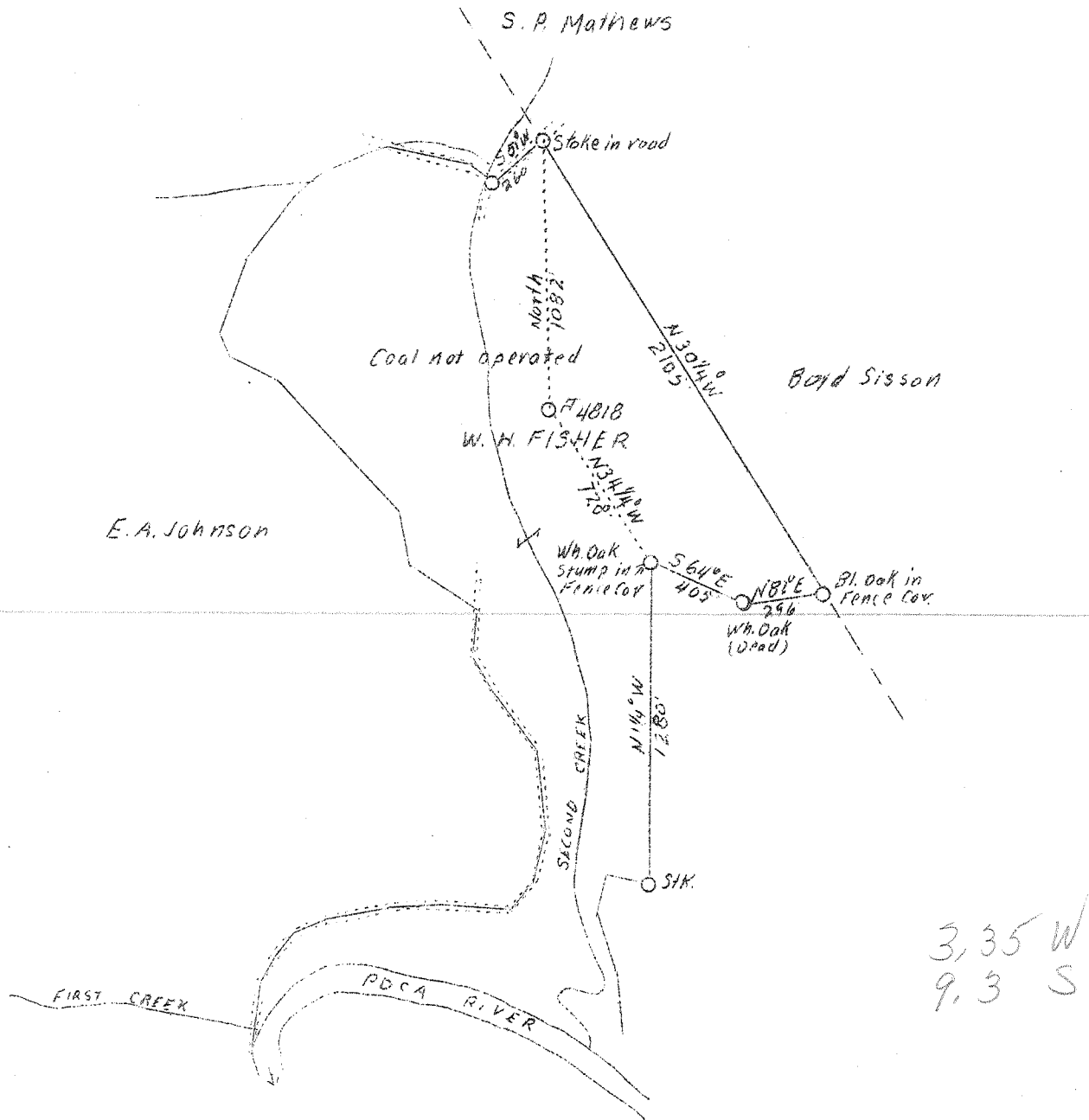


LATITUDE 38° 40'

LONGITUDE 81° 35'



REVISED LOCATION

Abcd

New Location

Company	United Fuel Gas Co.
Address	Charleston, W. Va.
Farm	W. H. Fisher
Acres	84
Lease No.	40494
Well (Farm) No.	One
Serial No.	4818
Elevation (SP)	658.4
Quadrangle	Kenna <i>S.W</i>
County	Kanawha
District	Poca
Engineer	G. A. Cunningham
Eng. Reg. No.	659
File No.	60-71
Date	Oct. 13, 1938
Scale	1" - 660'

STATE OF WEST VIRGINIA
 Department of Mines
 OIL & GAS DIVISION
 Charleston

WELL LOCATION MAP

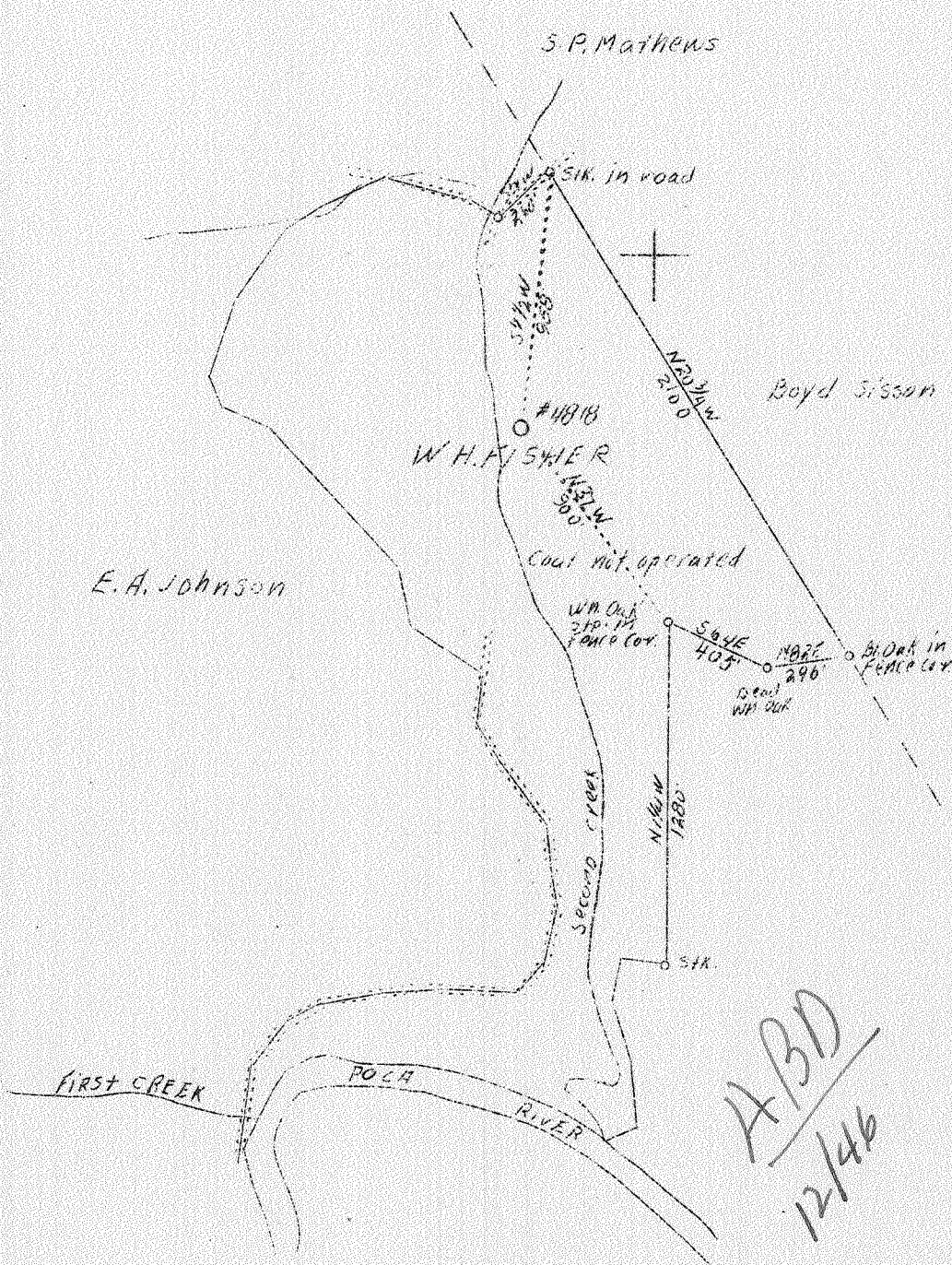
File No. Kan-591

x Denotes location of well on U. S. Topographic Maps, scale 1 to 62,500, latitude and longitude lines being represented by border lines as shown.

- Denotes one inch spaces on border line of original tracing.

LATITUDE 38 35'

LONGITUDE 81° 35'



W- 3.4
S- 3.38

New location

Company	United Fuel Gas Co.
Address	Charleston, W. Va.
Farm	W. H. Fisher
Acres	84
Lease No.	40494
Well (Farm) No.	One
Serial No.	4818
Elevation (SP)	658.4 ground
Quadrangle	Kenna <i>SC</i>
County	Kanawha
District	Poca
Engineer	G. A. Cunningham
Eng. Reg. No.	659
File No.	60-71
Date	Oct. 7, 1938
Scale	1" - 660'

STATE OF WEST VIRGINIA
Department of Mines
OIL & GAS DIVISION
Charleston

WELL LOCATION MAP
File No. Kan-591

x Denotes location of well on U. S. Topographic Maps, scale 1 to 62,500, latitude and longitude lines being represented by border lines as shown.

- Denotes one inch spaces on border line of original tracing.

WEST VIRGINIA DEPARTMENT OF MINES

OIL & GAS DIVISION

WELL RECORD

Permit No. Kan-591

Gas Well

Kenna Quad.

CASING & TUBING

Company	United Fuel Gas Co.	Wood Cond.	16
Address	Charleston, W. Va.	10	489 489
Farm	W. H. Fisher ACRES 84	8-5/8	1752 1752
Location	Second Creek	7"	4744 4744
Well No.	4818 ELEV. 662.3		
District	Poca - Kanawha County		
Surface & Mineral	W. H. Fisher, Sissonville, W.Va.		
Drilling commenced	Nov. 14, 1938		
Drilling completed	Feb. 17, 1939		
Date shot	2/21/39 - Depth 4833		
Open Flow	54/10ths Merc. in 7"		
Volume	11,474,000 c.f		
Rock pressure	1430 lbs. 48 hrs.		
Salt Water	1155		

Formation Color ^{Hor} 5' Top Base Result Formation Color ^{Hor} 5' Top Base Result

Red Rock		0	40				
Slate		40	110				
Red Rock		110	140				
Slate		140	210				
Red Rock		210	245				
Slate		245	305				
Red Rock		305	330				
Slate		330	350				
Sand		350	395				
Slate		395	460				
Sand		460	500				
Slate		500	535				
Sand		535	600				
Slate&Shells		600	655				
Sand		655	775				
Slate		775	910				
Sand		910	945				
Black Slate		945	1100				
Salt Sand		1100	1450	1155			
Slate		1450	1455				
Sand		1455	1480				
Slate		1480	1483				
Sand		1483	1500				
Slate		1500	1520				
Lime		1520	1535				
Slate		1535	1543				
Big Lime		1543	1697				
Injun Sand		1697	1747				
Slate		1747	1753				
Lime		1753	1790				
Slate&Shells		1790	2160				
Berea Sand		2160	2200				
Slate&Shells		2200	3820	Show gas 3360'			
Brown Shale		3820	3890				
Slate		3890	4440				
Brown Shale		4440	4640				
Black shale		4640	4725				
Corniferous Lime		4725	4832				
Criskany sand		4832	4872	Show gas 4834			
Sandy Lime - O		4872	4873	Gas pay 4834-4848			
				Gas pay 4859-4867			
Total depth			4873				

4725 4832
662 662
4063 4170