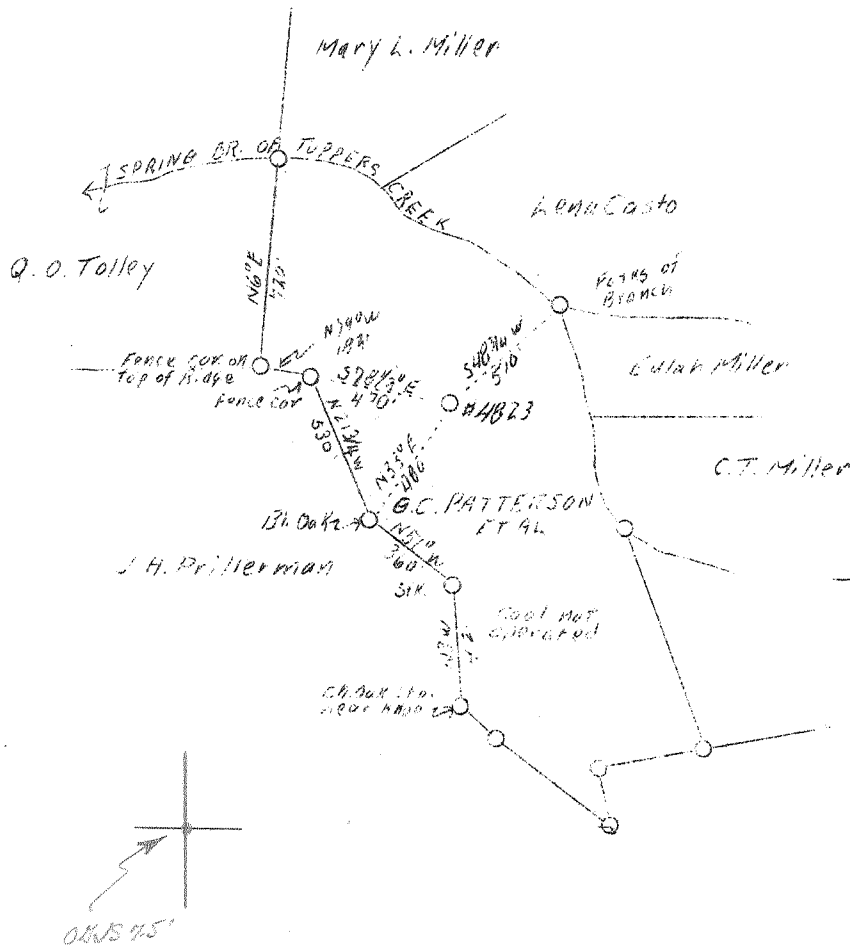


LATITUDE 38° 35'

LONGITUDE 81° 35'



$$\begin{array}{r} 06NS 75' \text{ loc } 15' \\ \hline 38^{\circ} 32' 30'' \quad 2.59S \quad 5.47S \\ 81^{\circ} 35' \quad 2.17W \quad 2.17W \end{array}$$

$$\frac{ASD.}{544}$$

2.23W  
 5.58S

New Location

Company	United Fuel Gas Co.	STATE OF WEST VIRGINIA Department of Mines OIL & GAS DIVISION Charleston  WELL LOCATION MAP  File No. <u>Kan-596</u>  x Denotes location of well on U. S. Topo-graphic Maps, scale 1 to 62,500, latitude and longitude lines being represented by border lines as shown.  - Denotes one inch spaces on border line of original tracing.
Address	Charleston, W. Va.	
Farm	G. C. Patterson, et al	
Acres	32	
Lease No.	42731	
Well (Farm) No.	One	
Serial No.	4823	
Elevation (SP)	-	
Quadrangle	Kenna	
County	Kanawha	
District	Poca	
Engineer	G. A. Cunningham	
Eng. Reg. No.	659	
File No.	62-69	
Date	Nov. 9, 1938	
Scale	1" - 660'	

6-19-38  
 192 ✓

WEST VIRGINIA DEPARTMENT OF MINES

OIL & GAS DIVISION

WELL RECORD

Permit No. Kan-576

Gas Well

Kenna Quad.

CASING & TUBING

Company	United Fuel Gas Co.,	13	15	15
Address	Charleston, W. Va.	10	597	597
Farm	G. C. Patterson, et al ACRE 32	8-5/8	1856	1856
Location	Spring Br. of Tappers Creek	7	4871	4871
Well No.	4823 ELEV. 890.6			
District	Poca - Kanawha County			
Surface & Min.	G. C. Patterson, et al South Charleston, W. Va.			

Drilling commenced December 2, 1938

Drilling completed March 18, 1938

Date shot Not shot

Open Flow 24/10ths Merc. in 7 inch

Volume 7,647,000 c.f.

Rock Pressure 1220 lbs. 48 hrs.

Salt Water 1195

Formation Color	Top	Base	Result	Formation Color	Top	Base	Result
Slate	3	20		Black Shale	4785	4855	
Sand	20	40		Corniferous Lime	4855	4959	
Slate	40	70		Oriskany Sand	4959	4980	
Red Rock	70	155		Total Depth	4980		
Sand	155	180					
Slate	180	200					
Red Rock	200	260					
Sand	260	280					
Slate	280	320					
Red Rock	320	340					
Sand	340	425					
Slate	425	465					
Sand	465	550					
Slate	550	620					
Slate & Shells	620	705					
Sand	705	783					
Slate	783	810					
Sand	810	835					
Slate	835	845					
Sand	845	835					
Slate & Shells	895	1105					
Sand	1105	1120					
Slate	1120	1185					
Salt Sand	1185	1420	W 1195				
Slate	1420	1485					
Maxon Sand	1485	1590					
Slate	1590	1595					
Little Lime	1595	1615					
Slate	1615	1618					
Lime Shells	1618	1623					
Slate	1623	1625					
Lime	1625	1630					
Pencil Cave	1630	1635					
Big Lime	1635	1783					
Injun Sand	1783	1840					
Lime	1840	1975					
Slate	1975	2170					
Sand	2170	2195					
Slate	2195	2250					
Berea	2250	2370					
Slate & Shells	2370	3450					
Brown Shale	3450	3525					
Slate & Shells	3525	3910					
Brown Shale	3910	4030					
Slate & Shells	4030	4520					
Brown Shale	4520	4770					
White Slate	4770	4785					