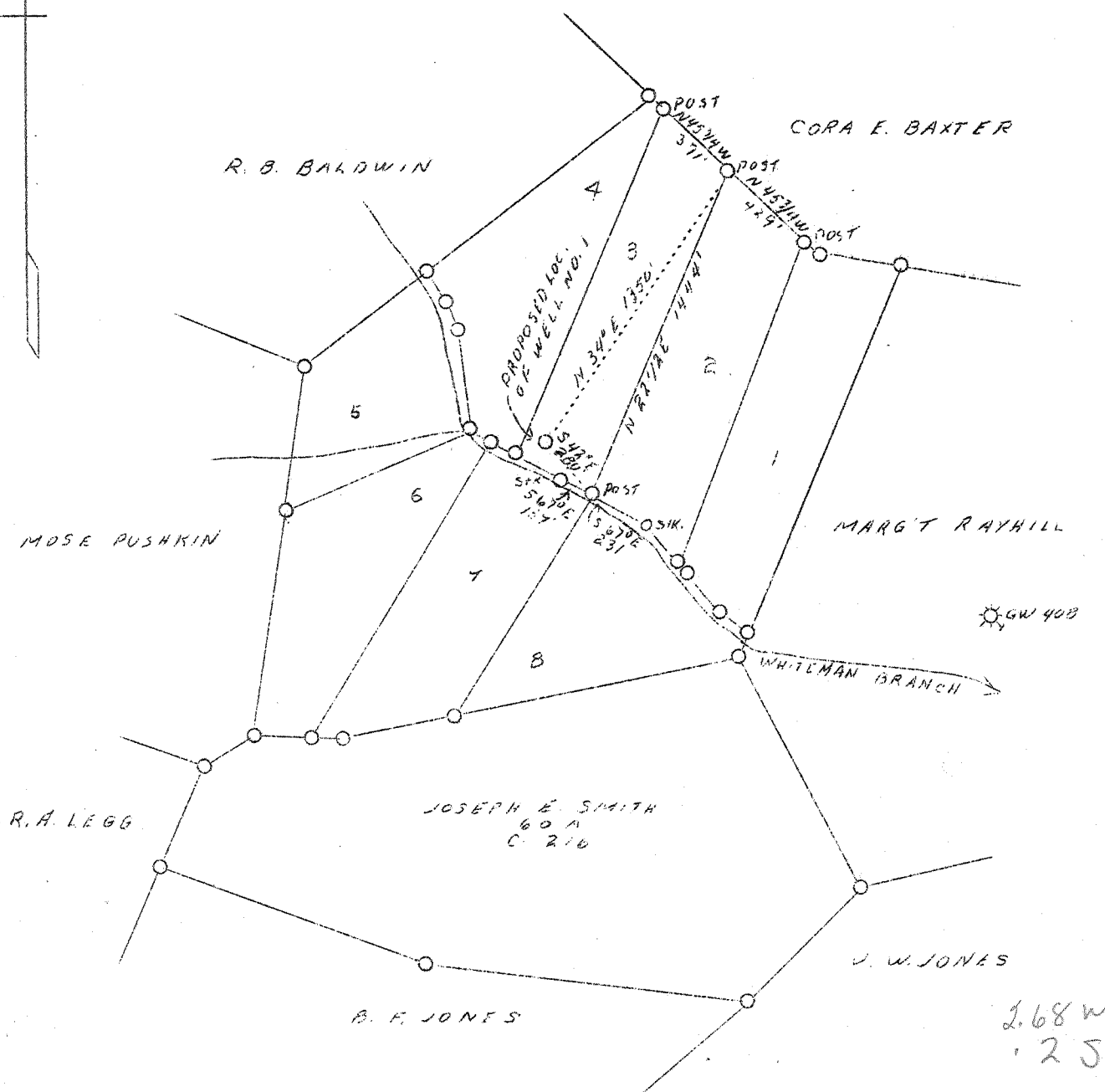


LATITUDE 38° 30'

LONGITUDE 81° 30'



75' 0625 loc 15'  
 38° 30' .055 .053  
 81° 32' 30" .30 W 2.56 W

C-216	JOSEPH E SMITH	60A
C-233A	F D JOHNSON ETAL	1/4 (13A) LOT 5
C-218	W. C. MARION	25A LOT 1 & 2
C-232	W. C. MARION ETAL	13A LOT 3
C-233	M. N. LANDERS	25A LOT 4 & 5
C-231	M. N. LANDERS	25A LOT 6 & 8
C-230	D. L. HUGHART	13A LOT 7

NOTE:

Company Columbian Carbon Co.  
 Address Box 1240, Charleston, W. Va.  
 Farm M. N. Landers, et al  
 Acres 161  
 Lease No. See note  
 Well (Farm) No. One  
 Elevation (SP) 846.0  
 Quadrangle Charleston - N.E.  
 County Kanawha  
 District Elk  
 Engineer James N. Sell  
 Eng. Reg. No. 772  
 Date Nov. 9, 1938  
 Scale 1" - 660'

STATE OF WEST VIRGINIA  
 Department of Mines  
 OIL & GAS DIVISION  
 Charleston

WELL LOCATION MAP  
 File No. Man-597

x Denotes location of well on U. S. Topographic Maps, scale 1 to 62,500, latitude and longitude lines being represented by border lines as shown.  
 - Denotes one inch spaces on border line of original tracing.

6-6 192

WEST VIRGINIA DEPARTMENT OF MINES

OIL & GAS DIVISION

W E L L R E C O R D

Permit No. Kan-597

Gas Well

Charleston Quad.

CASING & TUBING

Company	Columbian Carbon Co.	14"	36-0	36-0
Address	Box 1240, Charleston, W. Va.	10-3/4	367-10	pulled
Farm	M. N. Landers, et al ACRES 1.61	8-5/8	1570-5	1570-5
Location	Whitemans Branch	7	1559-2	1559-2
Well No.	1 (GW-421) ELEV. 851DF	5-1/2	4906-4	4906-4
District	Elk - Kanawha County	2-3/8	5038-7	5038-7
Surface & Mineral Address	M. N. Landers, et al Elkview, W. Va.	Packer - 7" O.D. Disc Wall Packer		
Commenced	Dec. 6, 1938	Size - 3-1/2' Long		
Completed	April 19, 1939	Depth set - 1547-1		
Shot	Not shot	Casing Cemented: (See below)		
Volume	2,814,000 c.f.			
Rock Pressure	1250 lbs. 2-1/2 hrs.			
Fresh Water	110' 1-10" blr. per hr.			
Salt Water	1135 HFW; 1127' 1-10 Blr. pr. hr.			

Formation Color <sup>Har</sup>/<sub>5</sub> Top Base Result Formation Color <sup>Har</sup>/<sub>5</sub> Top Base Result

Red Rock			25	25	CEMENT RECORD: 1/9/39 - Ran 75 sacks Alpha Cement 8-5/8" casing mixed with 1 sack of Aquagel. Ran 5 sacks Aquagel 4" solution ahead of cement. 10' spacer. Pipe went back to bottom. 30' hard cement in pipe. P. Patterson, Cementer - Halliburton Oil Well Cementing Company  3/28/39 - Ran 25 Sacks Alpha Cement around 5" .. 10' spacer ahead of cement No Aquagel. 10' cement in hole. P. Patterson, Cementer - Halliburton Oil Well Cementing Company.	
Sand			25	45		
Red Rock			45	75		
Slate			75	90		
Sand			90	125		W 110
Slate			125	150		
Red Rock			150	185		
Slate			185	230		
Sand			230	255		
Slate			255	335		
Sand			335	365		
Slate			365	440		
Sand			440	510		
Slate			510	645		
Sand			645	710		
Slate			710	770		
Sand			770	800		
Slate & Shells			800	980		
Sand			980	1040		
Slate			1040	1075		
Salt Sand			1075	1424	W 1127	
Slate			1424	1448	Gas show 1127	
Maxton Sand			1448	1492		
Slate			1492	1497		
Little Lime			1497	1538		
Pencil Cave			1538	1540		
Big Lime			1540	1700		
Big Injun Sand			1700	1719		
Slate			1719	1900		
Slate & Shells			1900	3325		
Brown Shale			3325	3375		
Slate & Shells			3375	3648		
Shale			3648	3680		
White Slate			3680	3810		
Brown Shale			3810	3945		
White Slate			3945	4430	Gas 4380 show only	
Brown Shale			4430	4759		
Black Shale			4759	4856	SLM	
Corniferous	SLM		4856	4959	SLM	
Oriskany	SLM		4959	5015		
Lime			5015	5021		
Oriskany Sand			5021	5028		
Total Depth				5028	Pay: 4976-4982	