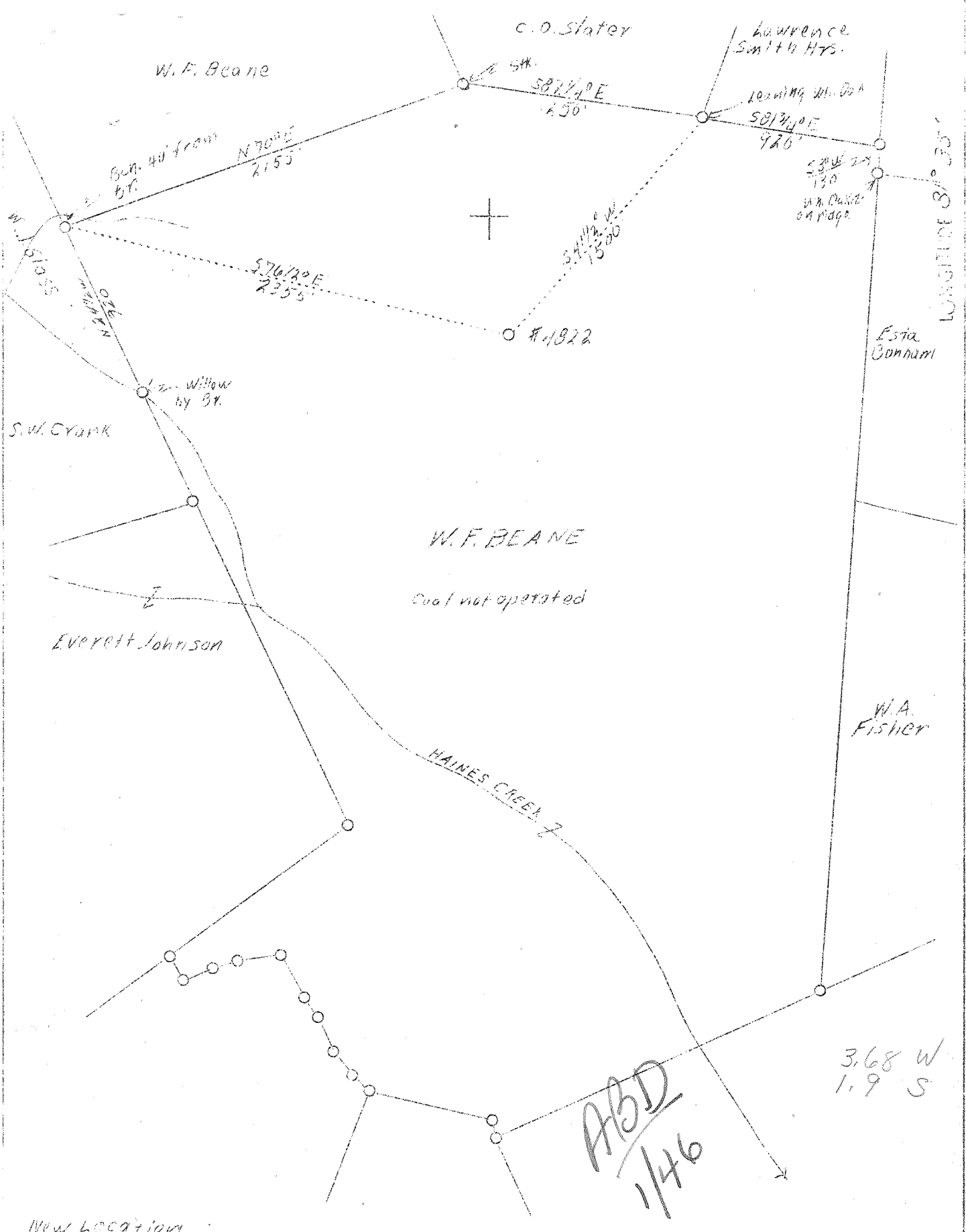


M

LATITUDE 38° 35'



New Location

Company	United Fuel Gas Co.
Address	Charleston, W. Va.
Farm	W. F. Beane
Acres	362
Lease No.	40491
Well (Farm) No.	Two
Serial No.	4822
Elevation (SP)	-
Quadrangle	Kenna S.C.
County	Kanawha
District	Poca
Engineer	G. A. Cunningham
Eng. Reg. No.	659
File No.	60-73
Date	Nov. 17, 1933
Scale	1" - 660'

STATE OF WEST VIRGINIA
 Department of Mines
 OIL & GAS DIVISION
 Charleston

WELL LOCATION MAP

File No. Kan-599

x Denotes location of well on U. S. Topographic Maps, scale 1 to 62,500, latitude and longitude lines being represented by border lines as shown.

- Denotes one inch spaces on border line of original tracing.

WEST VIRGINIA DEPARTMENT OF MINES

OIL & GAS DIVISION

W E L L R E C O R D

Permit No. Kan-599.

Gas Well

Kenna Quad.

CASING & TUBING

Company	United Fuel Gas Co.	13	15	15
Address	Charleston, W. Va.	10	708	708
Farm	W. F. Beane ACRES 362	8-5/8	1992	1992
Location	Haines Branch	7"	4977	4977
Well No.	4822 ELEV. 811.0			
District	Poca - Kanawha County			
Surface & Mineral	W. F. Beane, Sissonville, W.Va.			
Commenced	Dec. 22, 1938			
Completed	March 27, 1939			
Shot	4/22/39 - Depth 5070			
Open Flow	54/10ths Water in 7" A.S.			
Volume	3,170,000 c.f.			
Rock Pressure	1550 lbs. 48 hrs.			
Fresh Water	700			
Salt Water	1418			

Formation Color ^{Mar} Top Base Result Formation Color ^{Mar} Top Base Result

Formation	Color	Mar	Top	Base	Result	Formation	Color	Mar	Top	Base	Result
Soil			0	10							
Rock			10	30							
Clay			30	50							
Slate			50	80							
Red Slate			80	110							
White Slate			110	150							
Red Slate			150	200							
White Slate			200	220							
Sand			220	290							
Slate			290	345							
Red Rock			345	390							
White Slate			390	565							
Red Slate			565	630							
Sand			630	700	W 700'						
Slate & Shells			700	830							
White Slate			830	930							
Black Slate			930	950							
Sand			950	1026							
Black Slate			1026	1092							
Slate & Shells			1092	1318	Settling sand 1418'						
Salt Sand			1318	1734	Hole full water 1418						
Little Lime			1734	1754							
Pencil Cave			1754	1758							
Big Lime			1758	1925							
Slate			1925	1928							
Injun			1928	1972							
Slate			1972	1990							
Lime Shells			1990	1997							
Slate & Shells			1997	2383							
Brown Shale			2383	2387							
Berea Sand			2387	2405							
Slate & Shells			2405	4075							
Brown Shale			4075	4278							
White Slate			4278	4685							
Brown Shale			4685	4960							
Corniferous Lime			4960	5067	Show gas 5070						
Oriskany Sand			5067	5112	Gas 5070-5079						
Dark Sandy Lime			5112	5122	Gas 5088-5092						
Total Depth				5122							