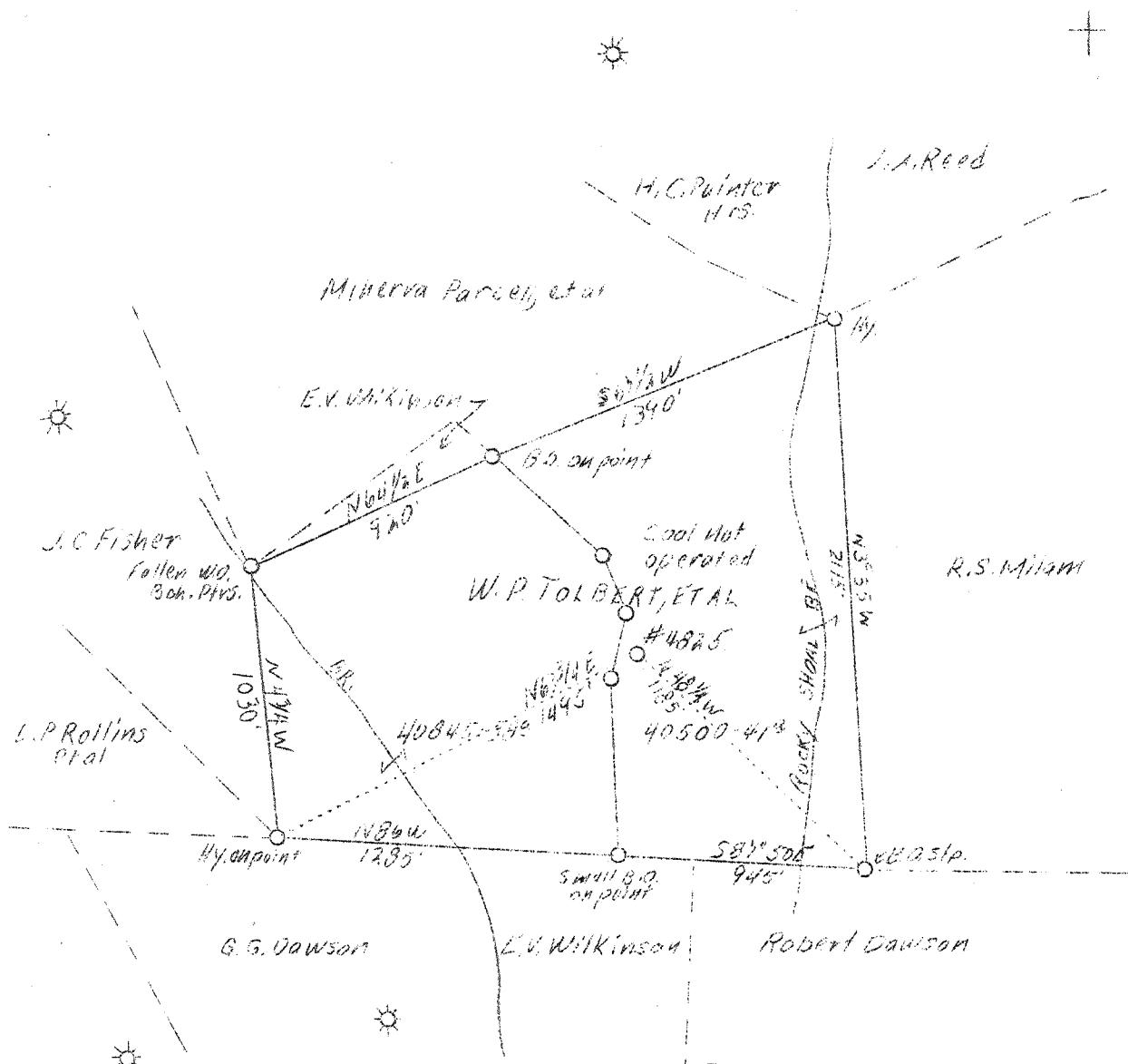


LATITUDE 38° 35'

LONGITUDE 81° 35'



ABD
10/1/44

W- 18
S- 1, 184

New Location

| | |
|-----------------|---------------------|
| Company | United Fuel Gas Co. |
| Address | Charleston, W. Va. |
| Farm | W.P. Tolbert et al |
| Acres | 38, 41 |
| Bease No. | 40845, 40500 |
| Well (Farm) No. | 1 |
| Serial No. | 4835 |
| Quadrangle | Kenna |
| County | Kanawha |
| District | Poca |
| Eng. | G.A. Cunningham |
| Eng. Reg. No. | 659 |
| File No. | 62-73 |
| Date | 12/12/38 |
| Scale | 123- 660' |

STATE OF WEST VIRGINIA
Department of Mines
OIL AND GAS DIVISION
Charleston

WELL LOCATION MAP

File No. 62-73-602

x Denotes location of well on U.S. Topographic Maps, scale 1 to 62,500, latitude and longitude lines being represented by border lines as shown.

- Denotes one inch spaces on border line of original tracing.



WEST VIRGINIA DEPARTMENT OF MINES

OIL & GAS DIVISION

W E L L R E C O R D

Permit No. Kan-602

Gas Well

Kenna Quad.

CASING & TUBING

Company United Fuel Gas Co.
 Address Charleston, W. Va.
 Farm W. P. Tolbert et al ACRES ³⁸/₄₁
 Location Rocky Shoal Branch
 Well No. 4825 ELEV. 886.1
 District Poca - Kanawha County
 Surface & Mineral Mrs. Julia Tolbert, et al
 Address Sissonville, W. Va.
 Commenced Jan. 10, 1939
 Completed Apr. 22, 1939
 Date shot 4/25/39 - Depth 5117
 Open Flow -
 Volume 3,500,000 c.f. estimated
 Rock Pressure 1325 lbs. 48 hrs.
 Salt Water 1355

Wood Cond. 15 15
 10" 692 692
 8-5/8 1976 1976
 7 5013 5013

| Formation | Color | Har | Top | Base | Result | Formation | Color | Har | Top | Base | Result |
|------------------|-------|-----|------|------|-------------------|-----------|-------|-----|-----|------|--------|
| Soil | | | 0 | 15 | | | | | | | |
| Red Rock | | | 15 | 30 | | | | | | | |
| Slate | | | 30 | 80 | | | | | | | |
| Red Rock | | | 80 | 120 | | | | | | | |
| Slate | | | 120 | 230 | | | | | | | |
| Sand | | | 230 | 290 | | | | | | | |
| Slate | | | 290 | 305 | | | | | | | |
| Red Rock | | | 305 | 370 | | | | | | | |
| Slate | | | 370 | 400 | | | | | | | |
| Red Rock | | | 400 | 450 | | | | | | | |
| Lime Shells | | | 450 | 465 | | | | | | | |
| Slate | | | 465 | 530 | | | | | | | |
| Sandy Lime | | | 530 | 560 | | | | | | | |
| Red Rock | | | 560 | 590 | | | | | | | |
| Slate | | | 590 | 655 | | | | | | | |
| Sand | | | 655 | 685 | | | | | | | |
| Slate | | | 685 | 700 | | | | | | | |
| Sand | | | 700 | 815 | | | | | | | |
| Slate | | | 815 | 825 | | | | | | | |
| Sand | | | 825 | 950 | | | | | | | |
| Slate | | | 950 | 965 | | | | | | | |
| Sand | | | 965 | 1060 | | | | | | | |
| Slate & Shells | | | 1060 | 1325 | HFV 1355 | | | | | | |
| Salt Sand | | | 1325 | 1551 | | | | | | | |
| Slate | | | 1551 | 1557 | | | | | | | |
| Sand | | | 1557 | 1708 | | | | | | | |
| Slate | | | 1708 | 1710 | | | | | | | |
| Little Lime | | | 1710 | 1755 | | | | | | | |
| Slate | | | 1755 | 1758 | | | | | | | |
| Big Lime | | | 1758 | 1883 | | | | | | | |
| Injun Sand | | | 1883 | 1950 | | | | | | | |
| Slate & Shells | | | 1950 | 3540 | | | | | | | |
| Brown Shale | | | 3540 | 3600 | | | | | | | |
| Slate & Shells | | | 3600 | 3995 | Show gas 4050 | | | | | | |
| Brown Shale | | | 3995 | 4150 | | | | | | | |
| Slate | | | 4150 | 4600 | | | | | | | |
| Brown Shale | | | 4600 | 4924 | | | | | | | |
| Black Shale | | | 4924 | 4995 | | | | | | | |
| Corniferous Lime | | | 4995 | 5111 | Gas pay 5118-5122 | | | | | | |
| Oriskany Sand | | | 5111 | 5152 | Gas pay 5131-5138 | | | | | | |
| Sandy Lime | | | 5152 | 5167 | | | | | | | |
| Sand | | | 5167 | 5183 | | | | | | | |
| Lime | | | 5183 | 5192 | | | | | | | |
| Total Depth | | | | 5192 | | | | | | | |

4995 5111 5152
 886 886 886
 4109 4109 4109