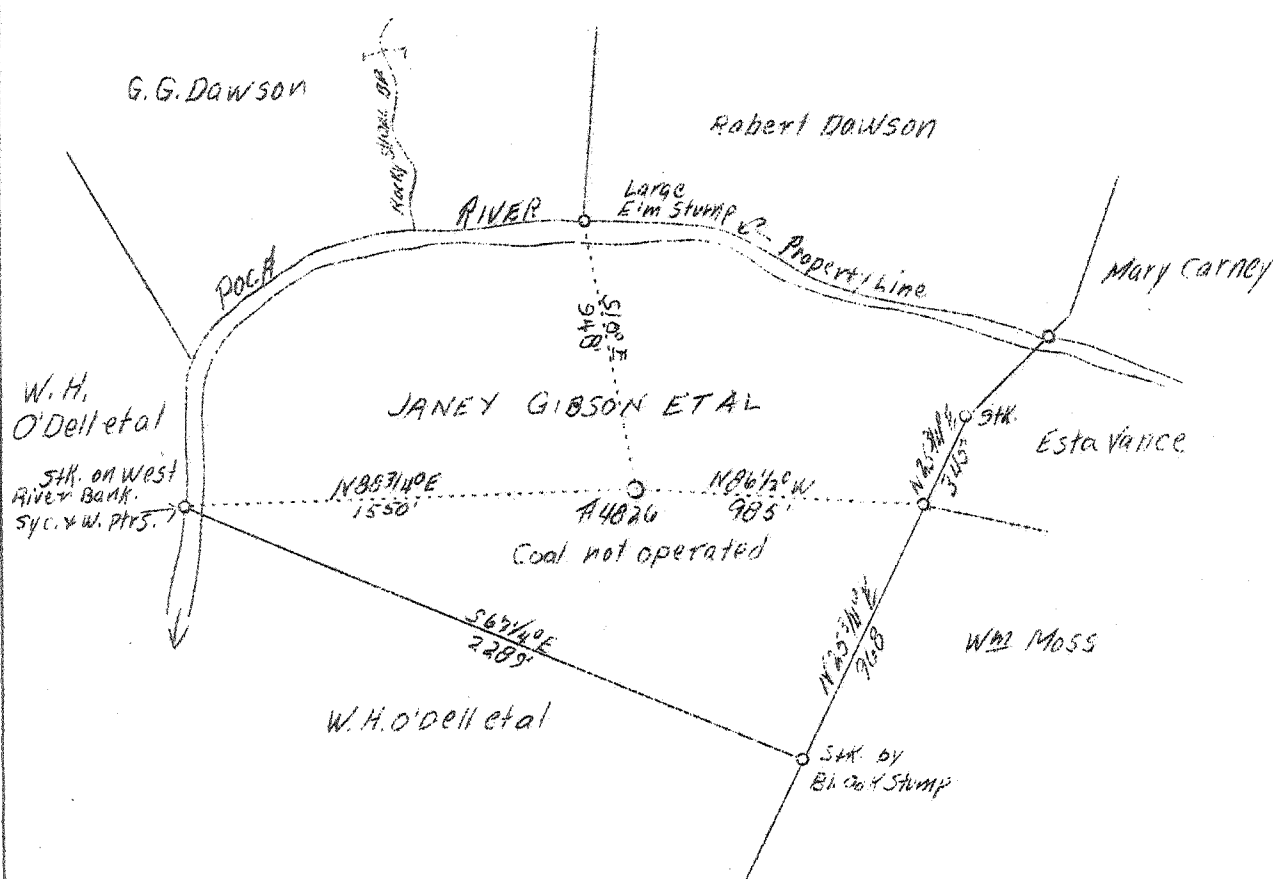


LATITUDE 38° 35'

LONGITUDE 81° 25'



ABD
8/14

W- 17
S- 2.35

New Location

Company	United Fuel Gas Co.	STATE OF WEST VIRGINIA Department of Mines OIL & GAS DIVISION Charleston WELL LOCATION MAP File No. <u>KAM-603</u> x Denotes location of well on U.S. Topographic Maps, scale 1 to 62,500, latitude and longitude lines being represented by border lines as shown. - Denotes one inch spaces on border line of original tracing.
Address	Charleston, W. Va.	
Farm	Janey Gibson, et al	
Acres	83	
Lease No.	42772	
Well (Farm) No.	One	
Serial No.	4826	
Elevation (SL)	-	
Quadrangle	Kenna 5C	
County	Kanawha	
District	Poca	
Engineer	G. A. Cunningham	
Eng. Reg. No.	769	
File No.	62 - 73	
Date	Dec. 19, 1937 (?)	
Scale	1" - 660'	

WEST VIRGINIA DEPARTMENT OF MINES

OIL & GAS DIVISION

WELL RECORD

Permit No. Kan-603

Gas Well

Kenna Quad.

CASING & TUBING

Company	United Fuel Gas Co.	13	16	16
Address	Charleston, W. Va.	10	544	544
Farm	Jancy Gibson, et al ACRES 83	8-5/8	1819	1819
Location	Poca River	7	4884	4884
Well No.	4826 ELEV. 781.9			
District	Poca - Kanawha County			
Surface & Mineral Address	Mrs. George Gibson, et al Sissonville, W. Va.			
Commenced	Jan. 13, 1939			
Completed	May 5, 1939			
Shot	Not shot			
Open Flow	13/10ths Merc. in V inch			
Volume	5,628,000 c.f.			
Rock Pressure	1180 lbs, 48 hrs.			
Fresh Water	90			
Salt Water	1225			

Formation Color ^{Mar}/₃ TOP Base Result Formation Color ^{Mar}/₃ TOP Base Result

Slate		0	60						
Sand		60	112	W 90 l blr. per hr.					
Red Rock		112	310						
Slate & Shells		310	359						
Red Rock		359	369						
Blue Sand		369	390						
Slate & Shells		390	420						
Red Rock		420	465						
Blue Mud		465	537						
Sand		537	695						
Slate		695	705						
Sand		705	735						
Black Slate		735	745						
Sand		745	795						
Slate & Shells		795	880						
Sand		880	927						
Slate & Shells		927	1154						
Sand		1154	1184						
Slate		1184	1200	Show Gas 1215					
Salt Sand		1200	1550	Water 1225 Hole full					
Maxon Sand		1550	1610						
Little Lime		1610	1647						
Big Lime		1647	1750						
Injun Sand		1750	1795						
Black Slate		1795	1800						
Slate & Shells		1800	2185						
Brown Shale		2185	2205						
Berea Sand		2205	2215	Show gas 2208					
Slate & Shells		2215	3416						
Brown Shale		3416	3475						
Slate & Shells		3475	3720						
Brown Shale		3720	3748						
White Slate		3748	3880						
Brown Shale		3880	4050						
White Slate		4050	4473						
Brown Shale		4473	4865						
Corniferous Lime		4865	4977	Gas 4989-4994					
Oriskany Sand		4977	5021	Gas 5006-5012					
Total Depth			5921						

4865 4977
782 782
4083 4195