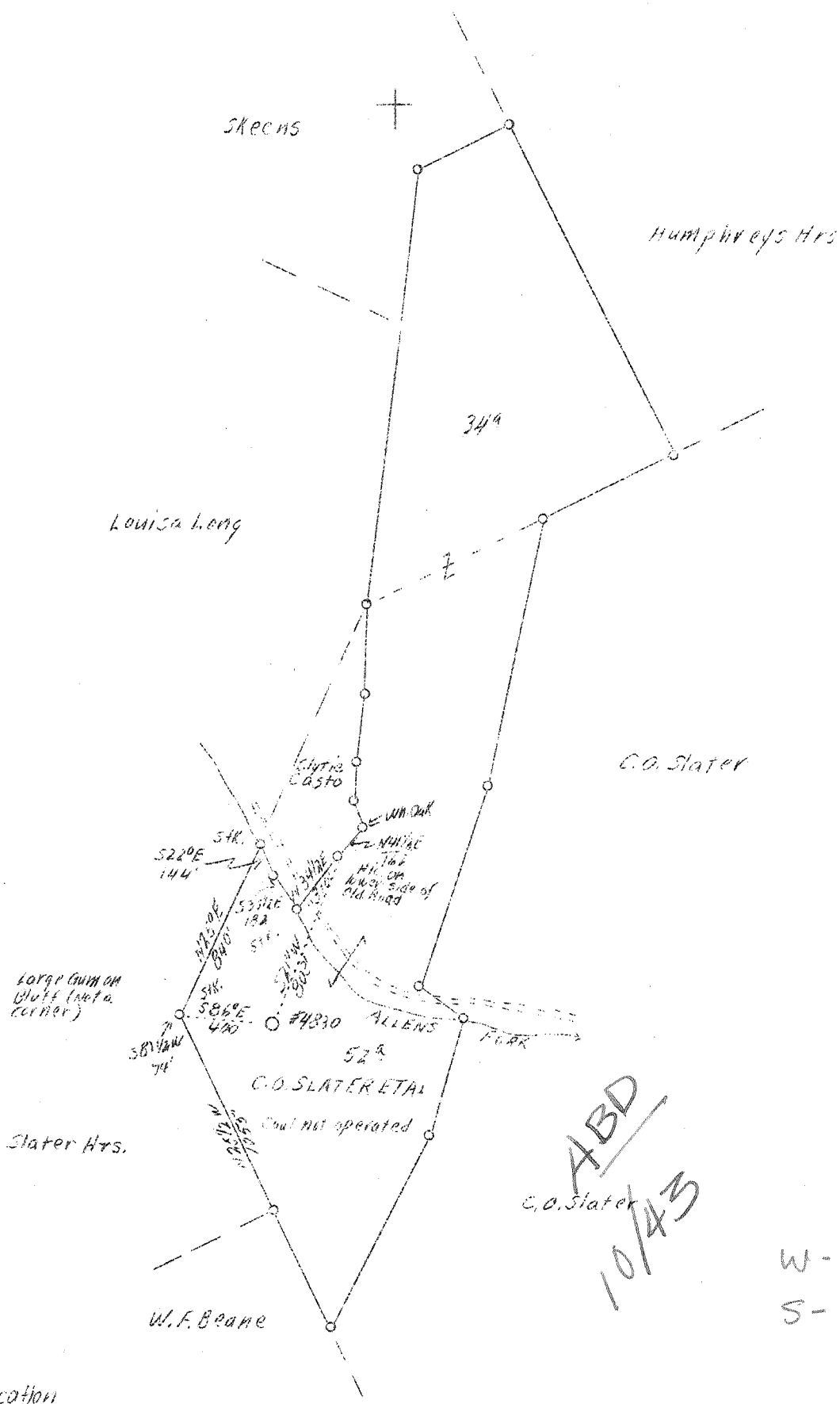


7M

LATITUDE 38° 35'

LONGITUDE 81° 35'



New location

Company	United Fuel Gas Co.	STATE OF WEST VIRGINIA Department of Mines OIL AND GAS DIVISION Charleston WELL LOCATION MAP File No. <u>Kan-610</u> x Denotes location of well on U.S. Topographic Maps, scale 1 to 62,500, latitude and longitude lines being represented by border lines as shown. - Denotes one inch spaces on border line of original tracing.
Address	Charleston, W.Va.	
Farm	C.O.Slater Et Al	
Acres	86	
Lease No.	40733	
Well(Farm)No.	1	
Serial No.	4830	
Quadrangle	Kenna <i>SC</i>	
County	Kanawha	
District	Poca	
Eng.	G.A.Cunningham	
Eng. Reg. No.	659	
File No.	60 - 73	
Date	1/17/39	
Scale	1" - 660'	

WEST VIRGINIA DEPARTMENT OF MINES

OIL & GAS DIVISION

WELL RECORD

Permit No. Kan-610

Gas Well

Kenna Quad.

CASING & TUBING

Company United Fuel Gas Co.
 Address Box 1256, Charleston, W. Va.
 Farm C. O. Slater, et al ACRES Pt. 86 & 41
 Location Allen Fork
 Well No. 4830 ELEV. 699.9
 District Poca - Kanawha County
 Surface & Mineral C. O. Slater, et al, Sissonville, W.Va.
 Drilling commenced Feb. 28, 1939
 Drilling completed May 30, 1939
 Date shot 5/30/39 - Depth 4965-4997
 Open Flow 30/10ths Merc. in 7 inch
 Volume 8,718,000 c.f.
 Rock Pressure 1620 lbs. 48 hrs.
 Salt Water 1342

10 642
 8-5/8 1893
 7 4882

Formation Color ^{Mar} 5 TOP Base Result				Formation Color ^{Mar} 5 TOP Base Result			
Soil		0	14	Blue Slate		4046	4564
Lime		14	48	Brown Shale		4564	4800
Red Rock		48	53	Black Shale		4800	4856
Sand		53	103	Corniferous		4856	4965
Slate & Shells		103	130	Oriskany		4965	5010
Blue Lime		130	185	Total Depth			5010
Red Rock		185	200				
Slate & Shells		200	265				
Red Rock		265	285				
Blue Shells		285	295				
Red Rock		295	357				
Slate & Shells		357	372				
Red Rock		372	402				
Slate & Shells		402	442				
Red Rock		442	450				
Slate & Shells		450	475				
Little Dunkard Sand		475	502				
Slate & Shells		502	548				
Red Rock		548	568				
Sand		568	610				
Slate & Shells		610	630				
Red Rock		630	640				
Slate & Shells		640	663				
Big Dunkard Sand		663	712				
Slate & Shells		712	763				
Sand		763	783				
Slate & Shells		783	870				
Sand		870	941				
Slate & Shells		941	955				
Sand		955	972				
Slate & Shells		972	1180				
Salt Sand		1180	1362	Water at 1342			
Maxon Sand		1362	1600				
Slate & Shells		1600	1615				
Little Lime		1615	1666				
Slate		1666	1668				
Big Lime		1668	1821				
Big Injun Sand		1821	1864				
Slate		1864	1868				
Sand		1868	1884				
Slate		1884	1890				
Slate & Shells		1890	2303				
Berea Sand		2303	2326				
Slate & Shells		2326	3500				
Brown Shale		3500	3635				
Gritty Lime		3635	3765				
Brown Shale		3765	4046				