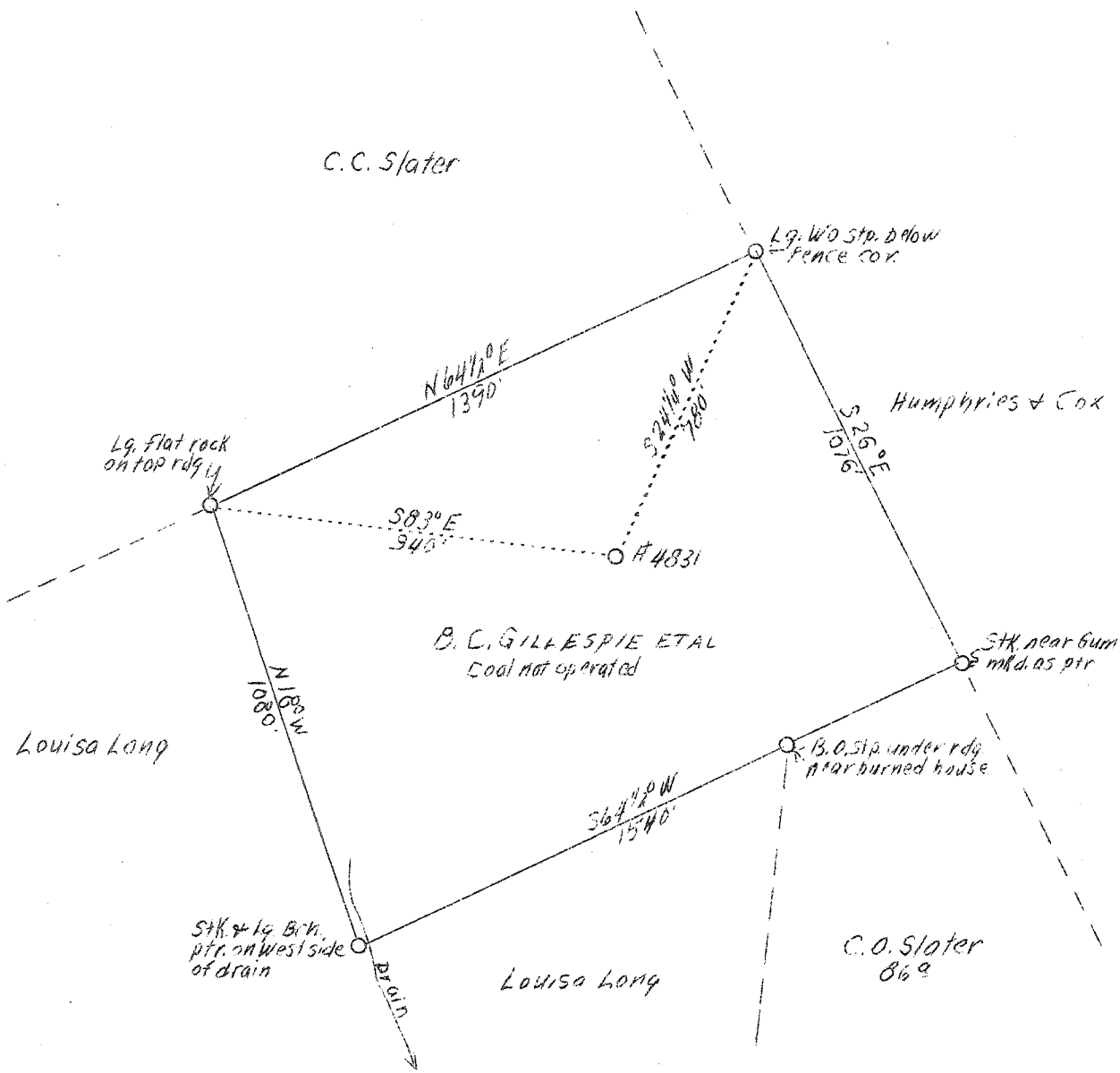


LATITUDE 38° 35'

LONGITUDE 81° 35'



ABD
5/46

W - 3.89
S - 153'

New location

Company	United Fuel Gas Co.
Address	Charleston, W.Va.
Farm	B.C. Gillespie Et Al
Acres	1/5 40
Lease No.	42795
Well (Farm) No.	1
Serial No.	4831
Quadrangle	Kenna <i>SC</i>
County	Kanawha
District	Poca
Eng.	G.A. Cunningham
Eng. Reg. No.	659
File No.	60 - 75
Date	1/20/39
Scale	1" - 400'

STATE OF WEST VIRGINIA
Department of Mines
OIL AND GAS DIVISION
Charleston

WELL LOCATION MAP

File No. Kan-611

x Denotes location of well on U.S. Topographic Maps, scale 1 to 62,500, latitude and longitude lines being represented by border lines as shown.

- Denotes one inch spaces on border line of original tracing.

WEST VIRGINIA DEPARTMENT OF MINES

OIL & GAS DIVISION

WELL RECORD

Permit No. Kan-611

Gas Well

Kenna Quad.

CASING & TUBING

Company	United Fuel Gas Co.	Wood	16	16
Address	Charleston, W. Va.	14	769	
Farm	B. C. Gillespie, et al ACREs 40	10	840	840
Location	Long Branch of Trace Fork	8-5/8	2162	2162
Well No.	4831 ELEV. 969.6	5-1/2	5169	5169
District	Poca - Kanawha County			
Surface & Mineral	B. C. Gillespie, Charleston, W.Va.			
Commenced	March 24, 1939			
Completed	Sept. 18, 1939			
Shot	Sept. 22, 1939 - Depth 5245			
Volume	Gas well			
Salt Water	1670			

733 Mcf before shot - Vol. XVI

Formation	Color	H ¹ / ₅	Top	Base	Result	Formation	Color	H ¹ / ₅	Top	Base	Result.
Surface			0	16		Slate & Shells			2577	3000	
Red Rock			16	40		Slate			3000	3625	
Sand			40	50		Slate & Shells			3625	3780	
Red Rock			50	75		Brown Shale			3780	3825	
Sand			75	86		Slate & Shells			3825	4225	
Red Rock			86	140		Brown Shale			4225	4340	
Sand			140	160		White Slate			4340	4855	Show O&G @ 4740
Slate			160	180							
Red Rock			180	215		Brown Shale			4855	5070	
Blue Slate			215	225		Black Shale			5070	5138	
Red Rock			225	290		Corniferous Lime			5138	5247	
Sand			290	315		Oriskany Sand			5247	5261	Gas at 5251-5255 pay
Slate			315	350							
Sand			350	400							
Slate			400	550		Total Depth				5261	
Red Rock			550	612							
Sand			612	635							
Red Rock			635	700							
Blue Mud			700	720							
Sand			720	730							
Slate			730	770							
Sand			770	796							
Red Rock			796	800							
White Slate			800	830							
Sand			830	925							
White Slate			925	940							
Sand			940	990							
Lime			990	1000							
Sand			1000	1055							
White Slate			1055	1098							
Brown Sand			1098	1145							
Black Slate			1145	1162							
Sand			1162	1260							
Slate			1260	1280							
Sand			1280	1308							
Slate			1308	1329							
White Sand			1329	1370							
Slate			1370	1549							
Sand			1549	1575							
Black Slate			1575	1600							
Salt Sand			1600	1893	HEW 1670						
Slate			1893	1920							
Maxon Sand			1920	1957							
Big Lime			1957	2096							
Injun Sand			2096	2143							
Slate&Shells			2143	2555							
Brown Shale			2555	2570	G 2565 Show						
Berea			2570	2577							

5138
970
4168