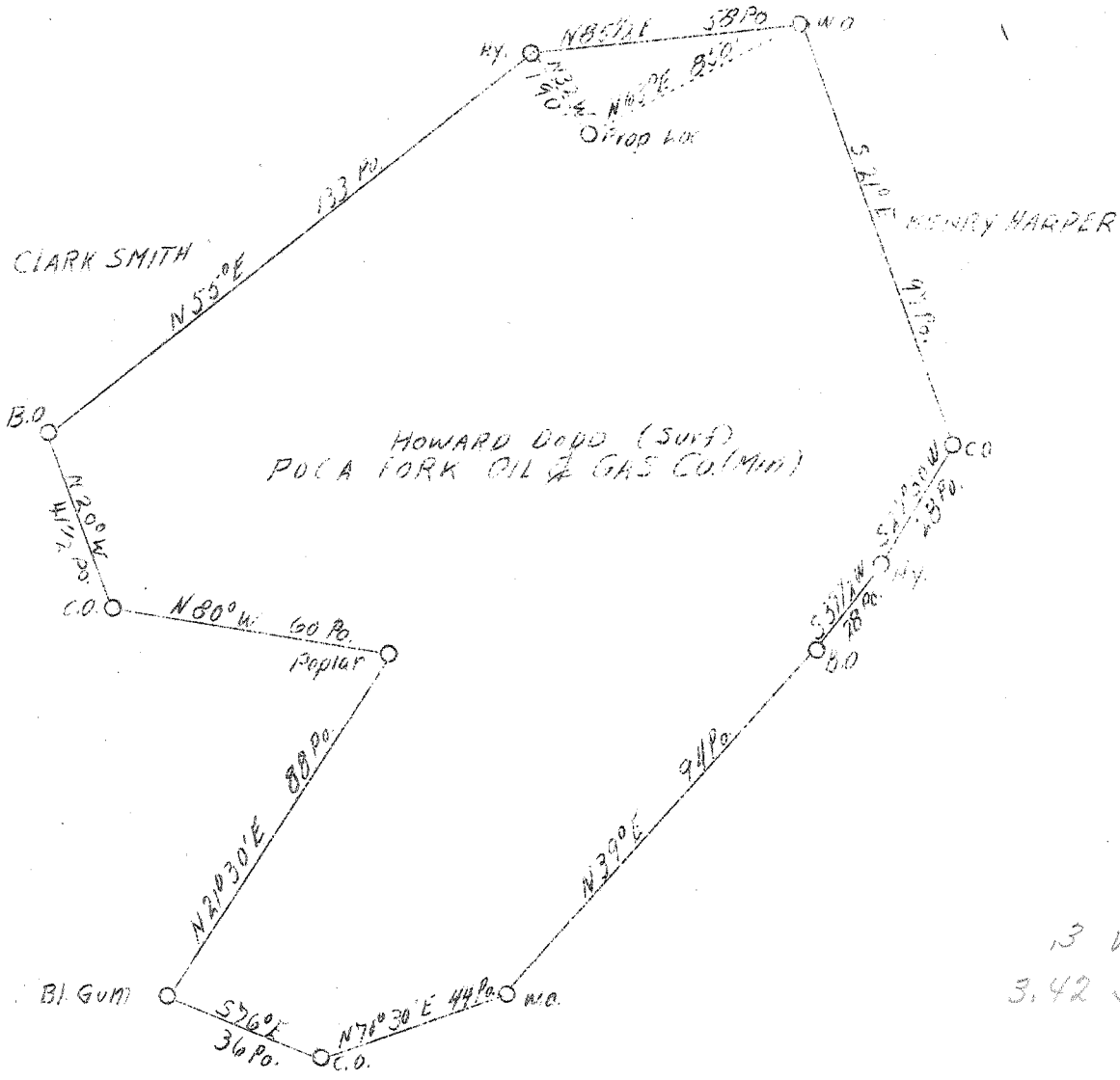


LATITUDE 38°35'

$\frac{0.233 \times 15}{38^{\circ}35'30''} = .09$
 $\frac{0.233 \times 130}{38^{\circ}35'30''} = .13$
 0.02

LONGITUDE 81°30'

JOHN DODD



3 W
3.425

New location

Company	Poca Fork Oil & Gas Co.
Address	Clendennin, W. Va.
Farm	Poca Fork Oil & Gas Co.
Acres	92
Well (Farm) No.	One
Elevation (SL)	892
Quadrangle	Kenna
County	Kanawha
District	Elk
Engineer	A. P. Price
Eng. Reg. No.	819
Date	Feb. 22, 1939
Scale	1" - 660' - 40 poles

STATE OF WEST VIRGINIA
 Department of Mines
 OIL & GAS DIVISION
 Charleston

WELL LOCATION MAP

File No. Kon-615

x Denotes location of well on U. S. Topographic Maps, scale 1 to 62,500, latitude and longitude lines being represented by border lines as shown.

- Denotes one inch spaces on border line of original tracing.

WEST VIRGINIA DEPARTMENT OF MINES
OIL & GAS DIVISION
W E L L R E C O R D

Permit No. Kan-615
Kenna Quad.

Gas Well

Company Poca Fork Oil & Gas Co.
Address Clendenin, W. Va.
Farm Fogarty ACRES -
Well No. 3 (Deep Well) ELEV. 916
District Elk - Kanawha County
Surface Howard Dodd, Frame, W. Va.
Mineral Poca Fork Oil & Gas Co.
Commenced 3/11/39
Completed 6/ 6/39
Shot 6/7/39 - Depth 5166-5226
Volume 2,000,000 c.f.
Rock Pressure 1700 lbs. 24 hrs.
Water -

CASING & TUBING

16	16
10-3/4	510
8-5/8	1636
7	5074
8" cemented in through Injun Sand	
7" cemented 12' in Corniferous Lime	

Conductor	0	16	Slate & Shells	3500	3936
Yellow Clay	16	20	Brown Shale	3936	4080
Slate & Shells	20	80	Slate & Lime	4080	4647
Red Rock	80	125	Brown Shale	4647	4930
Slate & Shells	125	185	White Slate	4930	4985
Red Rock	185	240	Black Shale	4985	5062
Slate & Shells	240	315	Corniferous	4062	5187
Red Rock	315	348	Oriskany	5187	5223
Sand	348	358	Black Lime - HR	5223	5237
Red Rock	358	384	Sand #	5237	5245
Sand	384	420	Sh. of Oil		
			5190	Total Depth	5245
Slate	420	441	Sh. of Oil		
			5239		
Pink Rock	441	449	Gas 5202 to		
			5212		
Slate & Shells	449	485	Sh. of Gas		
			1796-1820		
Sand	485	680	Sh. of Gas		
			1303		
Slate & Shells	680	700			
Black Slate	700	723			
Slate & Shells	723	735			
Sand	735	782			
Slate	782	810			
Sand	810	880			
Slate & Shells	880	952			
Sand	952	1000			
Slate	1000	1083			
Sand	1083	1113			
Slate	1113	1130			
Broken Salt Sand	1130	1205			
Sand	1205	1434			
Lime	1434	1450			
Slate & Shells	1450	1495			
Maxon Sand	1495	1632			
Little Lime	1632	1649			
Pencil Cove	1649	1654			
Big Lime	1654	1817			
Injun Sand	1817	1843			
White Slate	1843	1876			
Lime	1876	1882			
Slate	1882	1892			
Lime	1892	1899			
Slate & Shells	1899	2141			
Wear Shells	2141	2190			
Slate & Shells	2190	3442			
Bra. or Purple Slate	3442	3500			