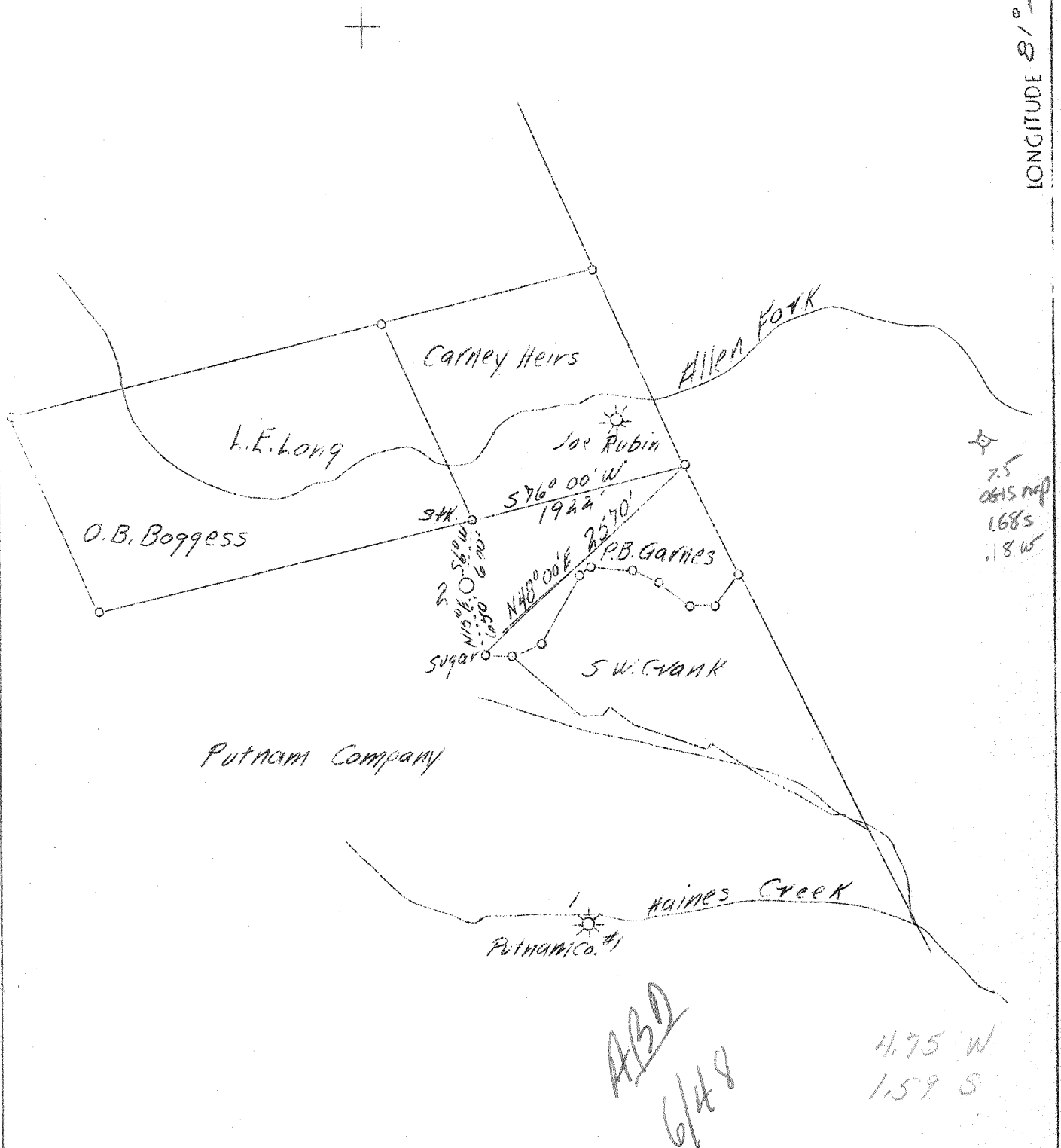


LATITUDE 38°35'

LONGITUDE 81°35'40"



New location

Company Godfrey L. Cabot, Inc.,
 Address 600 Union Bldg.,
 Charleston, W. Va.
 Farm Putnam Company
 Acres Part of 22,000
 Well (Farm) No. 2
 Serial No. 926
 Elevation (SL) 781.0
 Quadrangle Kenna S. *S. Sissonville*
 County Kanawha
 District Poca
 Engineer Charles Sturm
 Eng. Reg. No. 975
 Date March 4, 1939
 Scale 1" - 1320'

STATE OF WEST VIRGINIA
 Department of Mines
 OIL & GAS DIVISION
 Charleston

WELL LOCATION MAP

File No. Kan-618

x Denotes location of well on U. S. Topographic Maps, scale 1 to 62,500, latitude and longitude lines being represented by border lines as shown.

- Denotes one inch spaces on border line of original tracing.

ASD
6/48

4.75 W
1.59 S



WEST VIRGINIA DEPARTMENT OF MINES

OIL & GAS DIVISION

WELL RECORD

Permit No. Kan-618

Gas Well

Kenna Quad.

CASING & TUBING

Company	Godfrey L. Cabot, Inc.	13	16	16
Address	Charleston, W. Va.	10	644	644
Farm	Putnam Company ACRIS -	8	1791	
Location	-	7	2034	
Well No.	2 - Serial 926 ELEV. 781	5-1/2	4952	4952
District	Poca - Kanawha County	3	5057	5057
Surface & Mineral	-			
Commenced	May 16, 1939			Packer - Gas Anchor
Completed	Aug. 29, 1939			Size - 3x5-3/16x20
Open Flow	20/10ths Merc. in 6-5/8 - 15 min. A.S.			Depth set - 4988
Volume	6,363,000 c.f.			Perf. top - 5047
Shot	8/31/39 - Depth 5028 to 5053 - 25 qts. Gauge 77L M BS - 15 min. AS 6,363 M			" bot. - 5057
Rock Pressure	Oriskany 1540 lbs. in 8 hrs. " 1550 lbs. in 24 hrs. A.S.			

Formation Color ^H/₃ Top Base Result Formation Color ^H/₃ Top Base Result

Formation	Color	^H / ₃ Top	Base	Result	Formation	Color	^H / ₃ Top	Base	Result
Clay				10	Slate&Shells	soft			2115 2360
Sand	blue	10	30		Brown Shale	soft			2360 2370
Red Rock	red	30	60		Berea	hard			2370 2389
Sand & Slate	gr	60	115		Slate	soft			2389 2405
Red Rock	red	115	125		Lime	hard			2405 2775
Slate & Sand	wh	125	165		Slate&Shells	soft			2775 3585
Lime	gr	165	195		Brown Shale	soft			3585 3660
Slate	blue	195	270		Slate & Shells				3660 3835
Red Rock	red	270	280		Brown Slate				3835 3985
Slate & Sand	wh	288	310		Slate&Shell				3985 4025
Slate	gr	310	370		Brown Shell				4025 4120
Sand	gr	370	380		Slate Shell				4120 4315
Red Rock	red	380	415		Brown Shale				4315 4382
Sand	wh	415	428		Shell				4382 4840
Red Rock	red	428	470		White Slate				4340 4632
Slate	blue	470	490		Brown Shale				4632 4735
Red Rock	red	490	515		Slate & Shell				4735 4775
Sand	grey	515	520		Brown Shale				4775 4885
Slate&Sand	blk	520	605		Black Shale				4885 4927
Red Rock	red	605	620		Corniferous				4927 5022
Sand	gr	620	670		Oriskany				5022 5057 T. D.
Slate	blk	670	685						
Sand	gr	685	768						
Slate	blue	768	829						
Sand	wh	829	835						
Slate	blk	835	855						
Sand	soft	855	890						
Slate	soft	890	960						
Sand	hard	960	1015						
Slate	soft	1015	1076						
Sand	hard	1076	1086						
Slate&Shell	soft	1086	1255						
Sand		1255	1275						
Slate	soft	1275	1290						
Lime	hard	1290	1300						
Slate	soft	1300	1305						
Soft Sand	hard	1305	1630	SW 1375					
Slate	soft	1630	1635	SW 1405					
Maxton Sand	hard	1635	1760						
Big Lime	hard	1760	1815	HFSW at					
Sand	settled	1815	1819	1815					
Lime	hard	1819	1897						
Sand	hard	1897	1942						
Slate	soft	1942	1944						
Lime	hard	1944	1950						
Sand	hard	1950	2000						
Slate	soft	2000	2025						
Lime	hard	2025	2115						

Gauges in Oriskany Sand

8/26	5042	43/10	"	in 6-5/8	Tools	out
"	5043	16/10	"	"	Froze	off
8/27	5044	6/10	"	"	tools	out
"	5045	5/10	"	"	Drilling	
"	5046	4/10	"	"	Tools	out
8/28	5049	4/10	"	"	Tools	out
"	5051	9/10	"	"	Tools	out
"	5053	7/10	"	"	Tools	out
"	5055	7/10	"	"	Tools	out S.L.
"	5057	7/10	"	"	Tools	Out
8/24	5028	20/10	"	2"		
"	5028	10/10	"	5 1/2"	increased with-	
"	5029	20/10	"	"	out drilling	
"	5029	10/10	"	"	After drilling	
8/25	5029	17/10	"	6-5/8"	"	"
"	5030	37/10	"	"	"	"
"	5031	52/10	"	"	"	"
"	5032	50/10	"	"	Tools	out
"	5034	45/10	"	"	After	drilling
"	5036	43/10	"	"	Tools	out
8/26	5037 1/2	50/10	"	"	"	"
"	5039 1/2	43/10	"	"	"	"

Gas 1805, 2370, 4060-70 not enough to gauge.