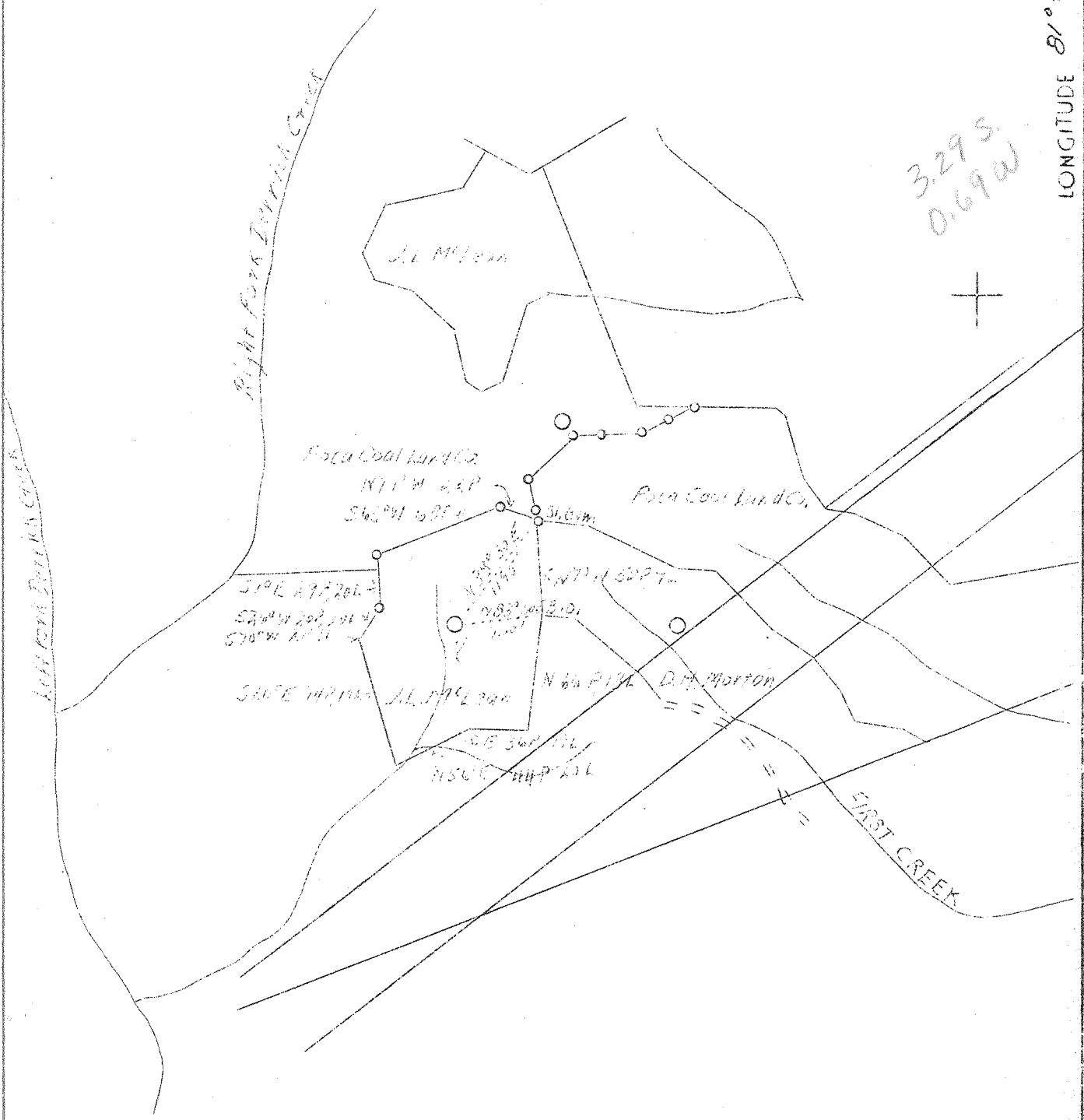


LATITUDE 38° 35'

LONGITUDE 81° 45'

3.29 S  
0.69 W



New Location

Company	Godfrey L. Cabot, Inc.	STATE OF WEST VIRGINIA Department of Mines OIL AND GAS DIVISION CHARLESTON
Address	606 Union Bldg. Charleston	
Farm	J.L. McLean W. Va. (H.M. Hoge, et al)	WELL LOCATION MAP
Acres	65½	
Well (Farm)	2 Serial 938	File No. <u>KAA-622</u>
Elevation (SL)	806.76	
Quadrangle	Kenna	<p>x Denotes location of well on United States Topographic Maps, scale 1 to 62,500, latitude and longitude lines being represented by border lines as shown.</p> <p>- Denotes one inch spaces on border line of original tracing.</p>
County	Kanawha	
District	Poca	
Engineer	Charles Sturm	
Engineer's Reg.	975	
Date	4-1-29	
Scale	1" = 1320'	

WEST VIRGINIA DEPARTMENT OF MINES

OIL & GAS DIVISION

WELL RECORD

Permit No. Kan-622

Gas Well

Kenra. Quad.

CASING & PUMPING

Company	Godfrey L. Cabot, Inc.,	16	12	12
Address	Charleston, W. Va.	10	561	561
Farm	J. L. McLean (None et al) ACRES -	6-5/8	1745	1745
Well No.	2 ELEV. 808.76	7 OD	1993	1993
District	Poca - Kanawha County	5-1/2	4893	4893
Surface & Mineral	-	2"	5003	5003
Commenced	May 23, 1939			
Completed	August 11, 1939			
Shot	6/12/39 - depth 4971-4996 - 25 qts.			8-1/4x10x16 Packer used and aquarel.
Open Flow	64/10ths M in 6-5/8 - 30 min. A.S.			
Volume	11,384 M.C.F.			6-5/8x8-1/4x8 H. & G. B.M.
Rock Pressure	Oriskany 1745# 48 hrs. 1730# 24 hrs.			Packer used on bottom of
Water	85 l blr. hr - 945 l blr. hr.			7" casing
	1375 2 1/2 blr. hr - 1425 hole full			7x8-5/8x16 Spang Casing Anchor Packer run with 7" Casing set at 1860'

Formation	Color	H <sup>+</sup> Top	Base	Result	Formation	Color	H <sup>+</sup> Top	Base	Result
Red Rock		0	74		Brown Shale		3981	4125	
Sand		74	90		White Slate		4125	4590	
White Slate		90	170		Brown Shale		4590	4775	
Red Rock		170	180		White Slate		4775	4785	
White Slate		180	224		Brown Shale		4785	4830	
Red Rock		224	255		Black Shale		4830	4865	
Slate		255	319		Corniferous Lime		4865	4971	S.L.
Lime		319	380		Oriskany Sand		4971	5003	S.L.
Red Rock		380	395		Total Depth			5003	
White Slate		395	433						
Red Rock		433	455		Gas 1766-72	40/10 W in 2"		267	
Slate & Shells		455	525		" 1804	50/16 W in 2"		298	
Red Rock		525	540		" 1844	30/10 W in 2"		231	
Slate & Shells		540	565		" 1845	38/10 W in 2"		260	
Sand		565	605		" 1903	30/10 W in 2"		231	
Slate & Shells		605	661		This gas killed in getting water shut off with 7" casing.				
Sand		661	715		Gauges in Oriskany Sand				
Slate & Shells		715	837		8/8	4971-74	4/10 W in 5-1/2"		
Sand		837	879		8/9	4974	2/10 W in 6-5/8		after blowing off
Blue Slate		879	900		"	4977	20/10 W in 2"		
White Sand		900	940		"	4978	15/10 W in 2"		
Blue Slate		940	1007		"	4979	15/10 W in 2"		
Blue Slate		1007	1196		"	4980	46/10 W in 2"		
Lime		1196	1263		"	4984	46/10 W in 2"		
Slate		1263	1280		"	4989	11/10 W in 6-5/8		
Salt Sand		1280	1686		8/10	4990	19/10 W in 6"		
Slate		1686	1687		8/11	4990-93	80/10 W in 6"		
Lime		1687	1717		"	4993	7/10 W in 6"		After blowing for 8-1/2 hrs.
Slate		1717	1721		"	4993-94	20/10 W in 6"		
Big Lime		1721	1903		"	4997	14/10 W in 6"		
Injun Sand		1903	1955		8/12	5003	3/10 W in 6"		
Black Lime		1955	1981		"	Shot from 4971-4996 with 25 qts.			
Slate		1981	1990			Before shot	3/10 W in 6-5/8		668M
Black Lime		1990	2012			8 Min. after shot	90/10 M		13,500M
Slate		2012	2028		12	"	80/10 M		12,726M
Black Lime		2028	2092		16	"	75/10 M		12,325M
Weir Sand		2092	2120		20	"	65/10 M		11,475M
Slate & Shells		2120	2355		30	"	64/10 M		11,384M
Berea Sand		2355	2365						
Slate & Shells		2365	3566						
Brown Shale		3566	3604						
White Slate		3604	3622						
Lime		3622	3836						
Brown Shale		3836	3880						
White Slate		3880	3923						
Brown Shale		3923	3956						
Slate		3956	3981						