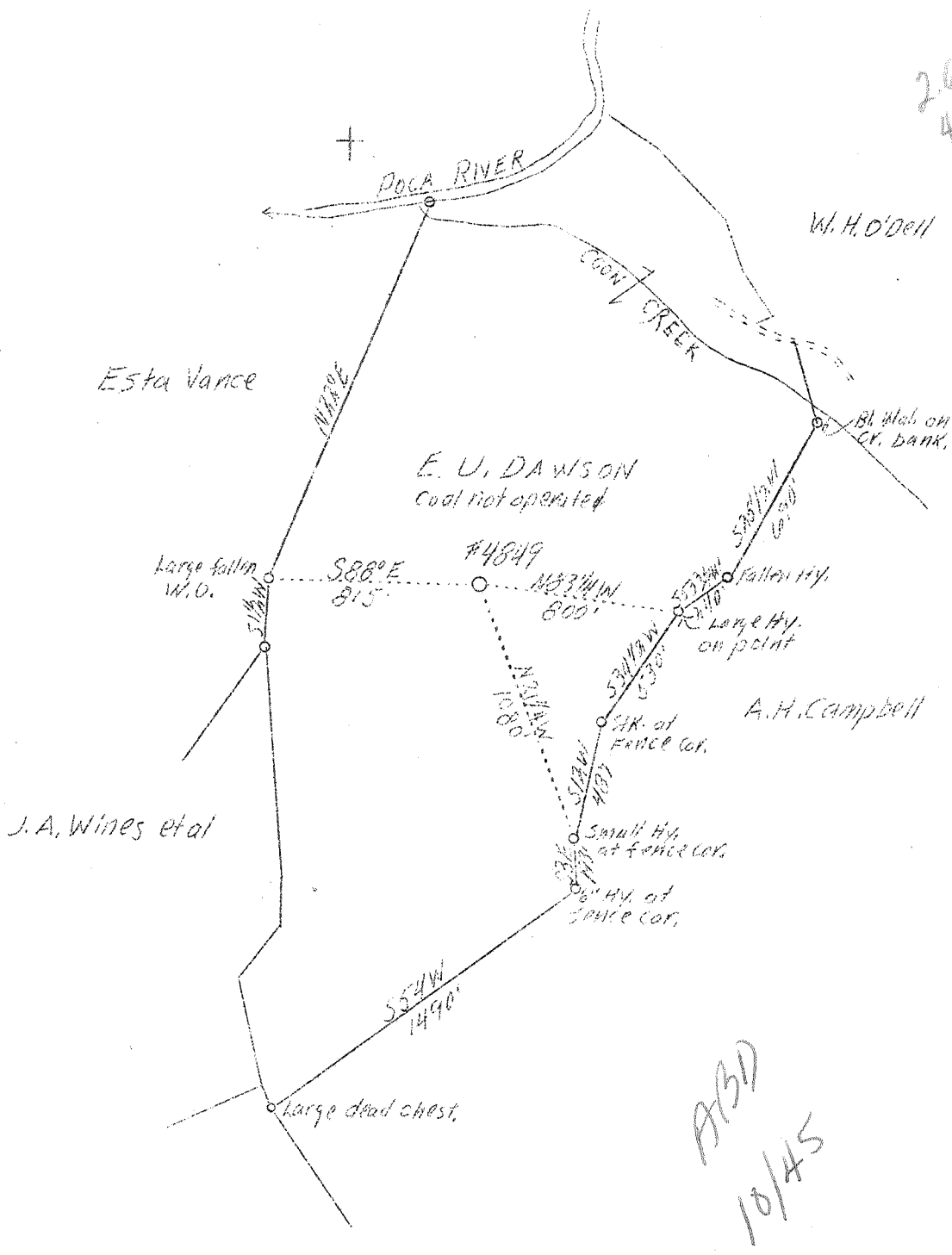


m

LATITUDE 38° 35'

LONGITUDE 81° 30'

2655  
4.44W



ABD  
10/45

Company United Fuel Gas Co.  
 Address Charleston, W. Va.  
 Farm E. U. Dawson  
 Acres 111.5  
 Lease No. 40111  
 Serial No. 4849  
 Well (Farm) No. 1  
 Quadrangle Kenna  
 County Kanawha  
 District Pocahontas  
 Eng. G.A. Cunningham  
 Eng. Reg. No. 659  
 File No. 64 - 71  
 Date 5/5/39  
 Scale 1" = 660'

STATE OF WEST VIRGINIA  
 Department of Mines  
 OIL AND GAS DIVISION  
 Charleston

WELL LOCATION MAP

File No. Kenn-626

x Denotes location of well on U.S. Topographic Maps, scale 1 to 62,500, latitude and longitude lines being represented by border lines as shown.

- Denotes one inch spaces on border line of original tracing.

6-6-1942 Deep Well (Orisk)

WEST VIRGINIA DEPARTMENT OF MINES

OIL & GAS DIVISION

WELL RECORD

Permit No. Kan-626

Gas Well

Kenna Quad.

CASING & TUBING

Company	United Fuel Gas Co.	Wood	15	15
Address	Charleston, W. Va.	14	135	135
Farm	E. U. Dawson ACRES 111.5	10	492	492
Location	Coon Creek	8-5/8	1711	1711
Well No.	4849 ELEV. 699.4	7	4767	4767
District	Poca - Kanawha County			
Surface & Mineral	E. U. Dawson, Sissonville, W. Va.			
Commenced	June 24, 1939			
Completed	Oct. 5, 1939			
Shot	Not shot			
Volume	Gas well 10,116 MCF Vol XVI			
Salt Water	1030			

Formation	Color	Top	Base	Result	Formation	Color	Top	Base	Result
Surface		0	30						
Mud		30	45						
White Slate		45	70						
Red Rock		70	150						
Slate		150	172						
Sand		172	190						
White Slate		190	215						
Red Rock		215	245						
White Slate		245	260						
Red Rock		260	285						
White Slate		285	300						
Sand		300	330						
Slate		330	380						
Sand		380	541						
Slate		541	586						
Sand		586	650						
Slate & Shells		650	800						
Sand		800	820						
Slate		820	957						
Sand		957	987						
Slate		987	1055						
Salt Sand		1055	1525	W 1030 Hole full					
Big Lime		1525	1640						
Injun		1640	1672						
Slate		1672	1678						
Shells		1678	1685						
Slate		1685	1711						
Weir Shells		1711	1771						
Slate		1771	2072						
Brown Shale		2072	2076						
Berea		2076	2080						
Slate & Shells		2080	2700						
Slate		2700	3300						
Brown Shale		3300	3361						
Slate		3361	3570						
Brown Shale		3570	3635						
Slate		3635	3677						
Brown Shale		3677	3940						
White Slate		3940	4358						
Brown Shale		4358	4657						
White Slate		4657	4678						
Brown Shale		4678	4716						
Black Shale		4716	4751						
Corniferous Lime		4751	4853						
Oriskany Sand		4853	4880	Gas 4862-4877 Pay					
Total Depth		4880							