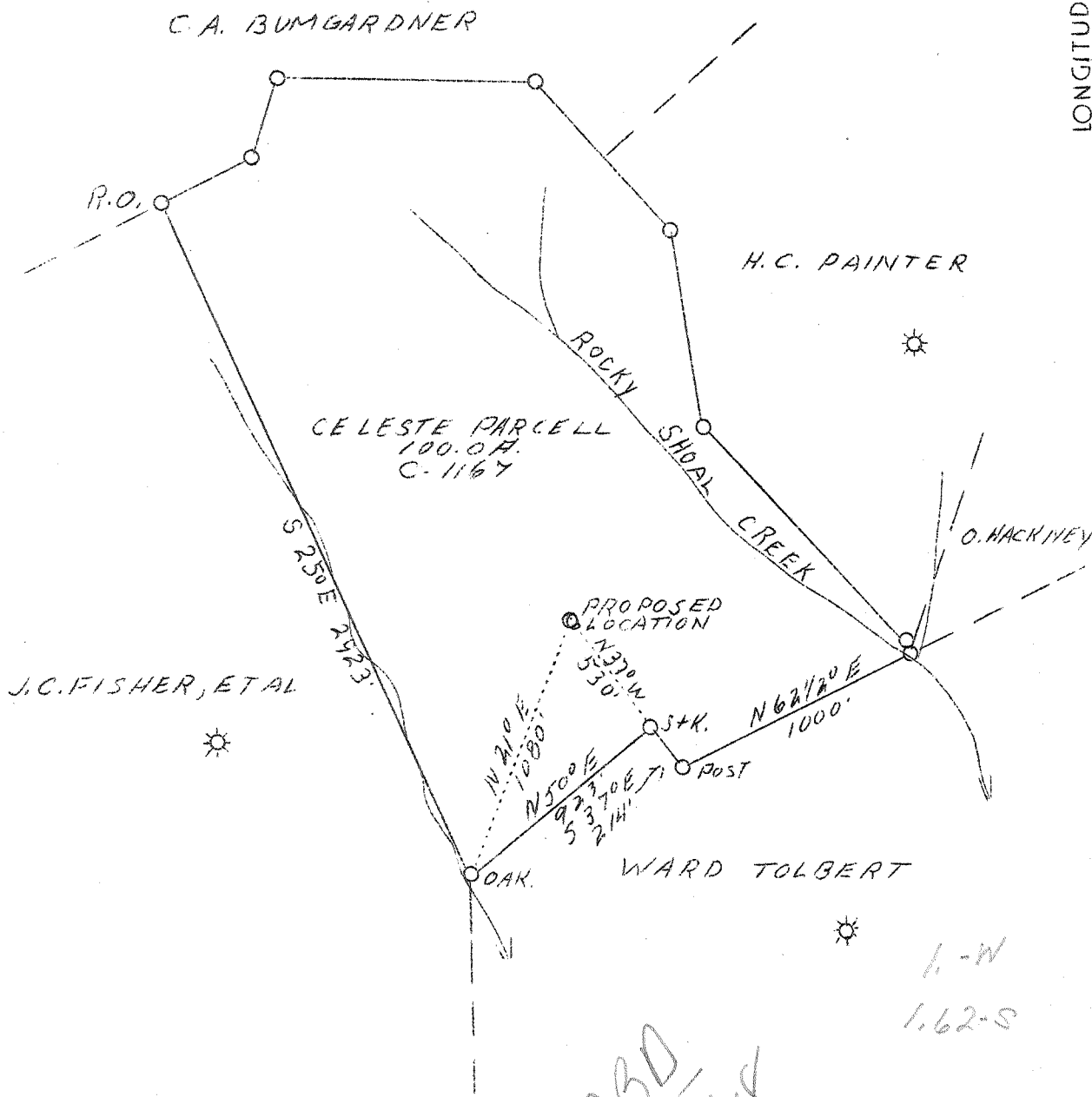


LATITUDE 38° 35'

LONGITUDE 81° 35'



New Location

B16-P72

Company Columbian Carbon Co.
 Address Box 1240, Charleston, W.Va.
 Farm Celeste Parcell
 Acres 100.0
 Lease No. C-1167
 Well (Farm) No. 1
 Elevation (SL) 960.4 - L
 Quadrangle Kenna, S. E.
 County Kanawha
 District Poca
 Engineer James N. Sell
 Eng. Reg. No. 772
 Date May 11, 1939
 Scale 1" - 660'

STATE OF WEST VIRGINIA
 Department of Mines
 OIL & GAS DIVISION
 Charleston

WELL LOCATION MAP

File No. Kan-630

x Denotes location of well on U. S. Topographic Maps, scale 1 to 62,500, latitude and longitude lines being represented by border lines as shown.

- Denotes one inch spaces on border line of original tracing.

Deep ✓

WEST VIRGINIA DEPARTMENT OF MINES

OIL & GAS DIVISION

WELL RECORD

Permit No. Kan-630

Gas Well

Kenna S. E. Quad.

CASING & TUBING

Company	Columbian Carbon Co.	14	59-6	59-6
Address	Box 1240, Charleston, W. Va.	10-3/4	784-6	784-6
Farm	Celeste Parcell ACRES 100	8-5/8	2058-2	2053-2
Location	Rocky Shoal Br. of Poca River	6-5/8	5121-1	5121-1
Well No.	1 (GW-426) ELEV. 961.7	2-3/8	5297-4	5297-4
District	Poca - Kanawha County			
Surface & Mineral Address	Celeste Parcell, et al Charleston, W. Va.	No Packer		
Commenced	5/29/39 - Completed 9/8/39			
Shot	9/8/39 - Depth 5217-5227			
Volume	3,182,000 c.f.			
Rock Pressure	1265 lbs. 5 days			
Salt Water	1460' - Rises 300'			
" "	1510 - " 1000'			

Formation	Color	Top	Base	Result	Formation	Color	Top	Base	Result
Red Rock		0	125		CEMENT RECORD: 7/3/39 - Ran 6 Sacks Aquagel				
Blue Shale		125	175		shoe of cement - Ran 99 Sacks Alpha				
Red Rock		175	225		cement mixed with 2% mixture Aquagel.				
Sand		225	265		10' spacer filled with cement on Aquagel				
Slate		265	325		and cement. Ran Baker Shoe. 32' cement				
Sand		325	375		in hole when drilled out.				
Red Rock		375	530		Dallas Holley, Cementer - Halliburton				
Slate & Shells		530	615		Oil Well Cementing Company				
Red Rock		615	625						
Slate & Shells		625	700		8/16/39 - Ran 25 Sacks Alpha Cement.				
Sand		700	710		Ran 10' spacer and one plug. 21'				
Slate & Shells		710	770		cement in hole.				
Lime		770	785		Dallas Holley, Cementer, Halliburton				
Sand		785	885		Oil Well Cementing Company.				
Slate		885	910						
Sand		910	940						
Slate & Lime		940	1010						
Sand		1010	1040						
Slate		1040	1065						
Sand		1065	1180						
Slate		1180	1350						
Sand		1350	1370						
Slate & Lime		1370	1425						
Salt Sand		1425	1803	W 1460 - Rises 300'					
Black Lime		1803	1820	W 1510 - Rises 1000'					
Pencil Cave		1820	1823						
Big Lime		1823	1980						
Big Injun Sand		1980	2032						
Black Lime		2032	2045						
Slate & Shells		2045	3870						
White Slate		3870	4075						
Gray Shale		4075	4095						
Brown Shale		4095	4196						
Gray Shale		4196	4290						
White Slate		4290	4684	Gas 4684-90 Show - not enough to gauge					
Blue Shale		4684	4768						
Brown Shale		4768	5000		5085	5197	5270		
White Slate		5000	5025		962	962	962		
Black Shale		5025	5083						
Black Lime		5083	5087		4123	4235	4308		
Corniferous Lime	SLM	5085	5197	SLM					
Oriskany Sand	SLM	5197	5242						
Lime Break		5242	5250						
Oriskany Sand		5250	5270						
Lime - H		5270	5276 1/2	Pay: 5217-5222					
Total Depth			5276 1/2						