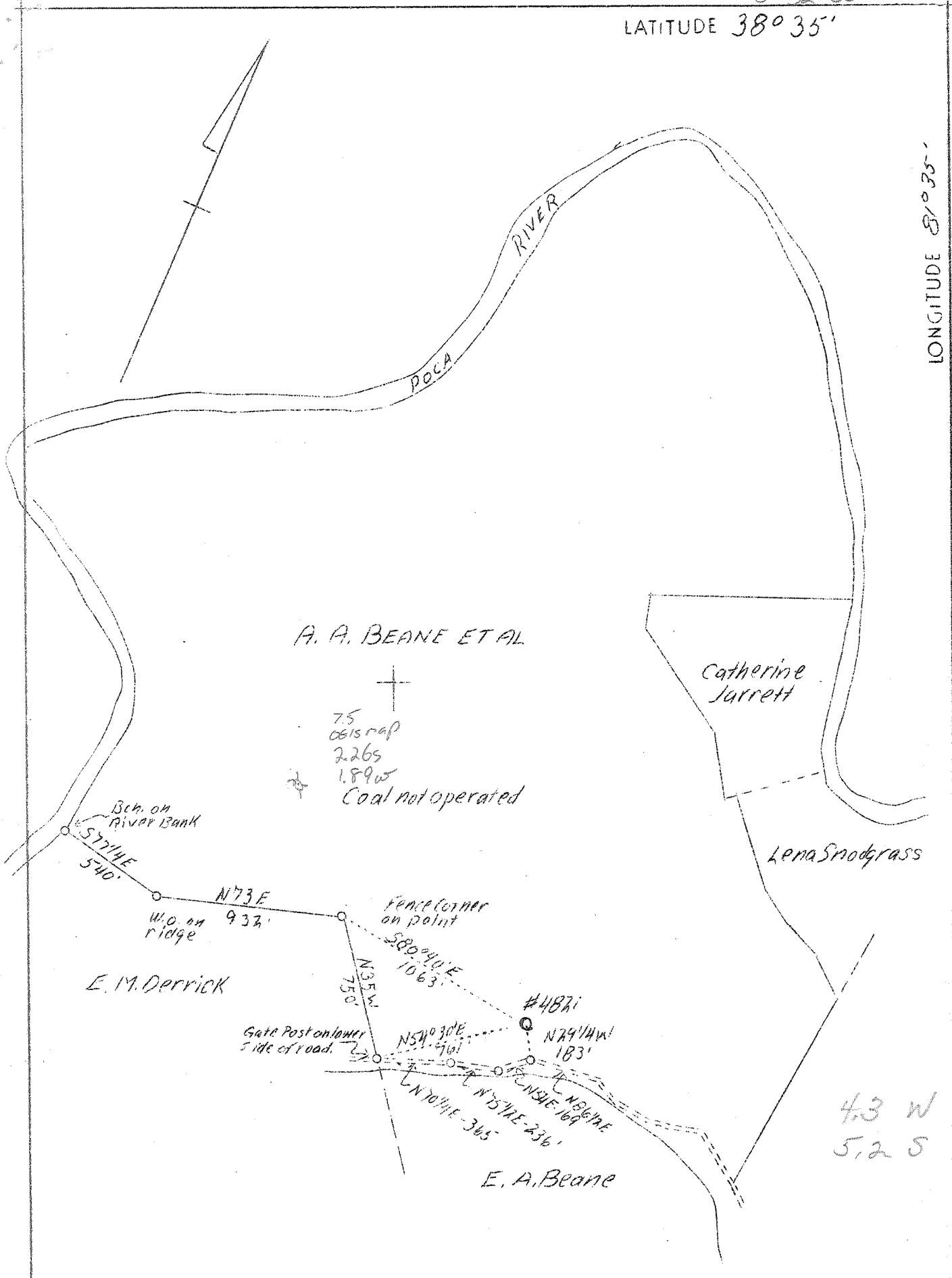


38° 32' 30"

LATITUDE 38° 35'

LONGITUDE 81° 37' 30"



Company United Fuel Gas Co.
 Address Charlosten, W.Va.
 Farm A.A.Boane et al
 Acres 289
 Lease No. 40764
 Serial No. 4821
 Well (Farm) No. 1
 Quadrangle Konna *See* *Siersonville*
 County Kanawha
 District Poca
 Eng. G.A.Cunningham
 Eng. Reg. No. 659
 File No. 60 69
 Date 5/22/39
 Scale 1" = 660'

STATE OF WEST VIRGINIA
 Department of Mines
 OIL AND GAS DIVISION
 Charlosten

WELL LOCATION MAP

File No. 1944-633

x Denotes location of well on U.S. Topographic Maps, scale 1 to 62,500, latitude and longitude lines being represented by border lines as shown.

- Denotes one inch spaces on border line of original tracing.

West Virginia Department of Mines

OIL & GAS DIVISION

WELL RECORD

Permit No. Kan-633

Gas Well

Kenna Quad.

CASING & TUBING

Company	United Fuel Gas Company	14	110	110
Address	Charleston, W. Va.	10	533	533
Farm	A. A. Beane, et al ACRES Pt. 289 & 56	8-5/8	1772	1772
Location	Tuppers Creek	7	4737	4737
Well No.	4821 ELEV. 727.2			
District	Poca - Kanawha County		Coal at 379'	36"
Sur. & Mineral	A. A. Beane, et al, Sissonville, W. Va.			
Commenced	June 22, 1939			
Completed	Oct. 2, 1939			
Date shot	Not shot			
Volume	Gas Well 5840 mcf - Vol XVI			
Salt Water	1125 and 1150			

Formation	Color	# of	Top	Base	Result	Formation	Color	# of	Top	Base	Result
Gravel			0	20		Brown Shale			3680	3715	
Red Rock			20	60		White Slate			3715	3785	
Slate			60	140		Brown Shale			3785	3979	
Red Rock			140	150		White Slate			3979	4375	
Slate & Shells			150	210		Brown Shale			4375	4515	
Sand			210	248		White Slate			4515	4560	
Slate & Shells			248	265		Black Slate			4560	4720	
Red Rock			265	344		Corniferous Lime			4720	4820	Gas show @ 4821
Sand			344	379							Gas 4821-
Coal			379	382		Oriskany Sand			4820	4856	4828 Pay
Slate & Shells			382	415							
Sand			415	478		Total Depth			4856		
Blue Lime			478	496							
Slate			496	590							
Sand			590	640							
Slate			640	650							
Sand			650	674							
Lime Shells			674	694							
Black Slate			694	750							
Sand			750	800							
Slate			800	1000							
Sand			1000	1055							
White Slate			1055	1075	W 1125						
Salt Sand			1075	1252	HFW 1150						
White Slate			1252	1255							
Sand			1255	1382							
Slate			1382	1387							
Sand			1387	1473							
Slate			1473	1485							
Sand			1485	1495							
Slate			1495	1503							
Black Lime			1503	1517							
Pencil Cove			1517	1520							
Lime			1520	1530							
Slate			1530	1534							
Big Lime			1534	1716							
Injun Sand			1716	1764							
Slate			1764	1770							
Lime Shells			1770	1935							
White Slate			1935	2093							
Slate & Shells			2093	2150							
Black Slate			2150	2160							
Berea Sand			2160	2175							
Slate & Shells			2175	2340							
White Slate			2340	2840							
Dark Slate			2840	3405							
Brown Shale			3405	3465							
Slate & Lime Shells			3465	3680							