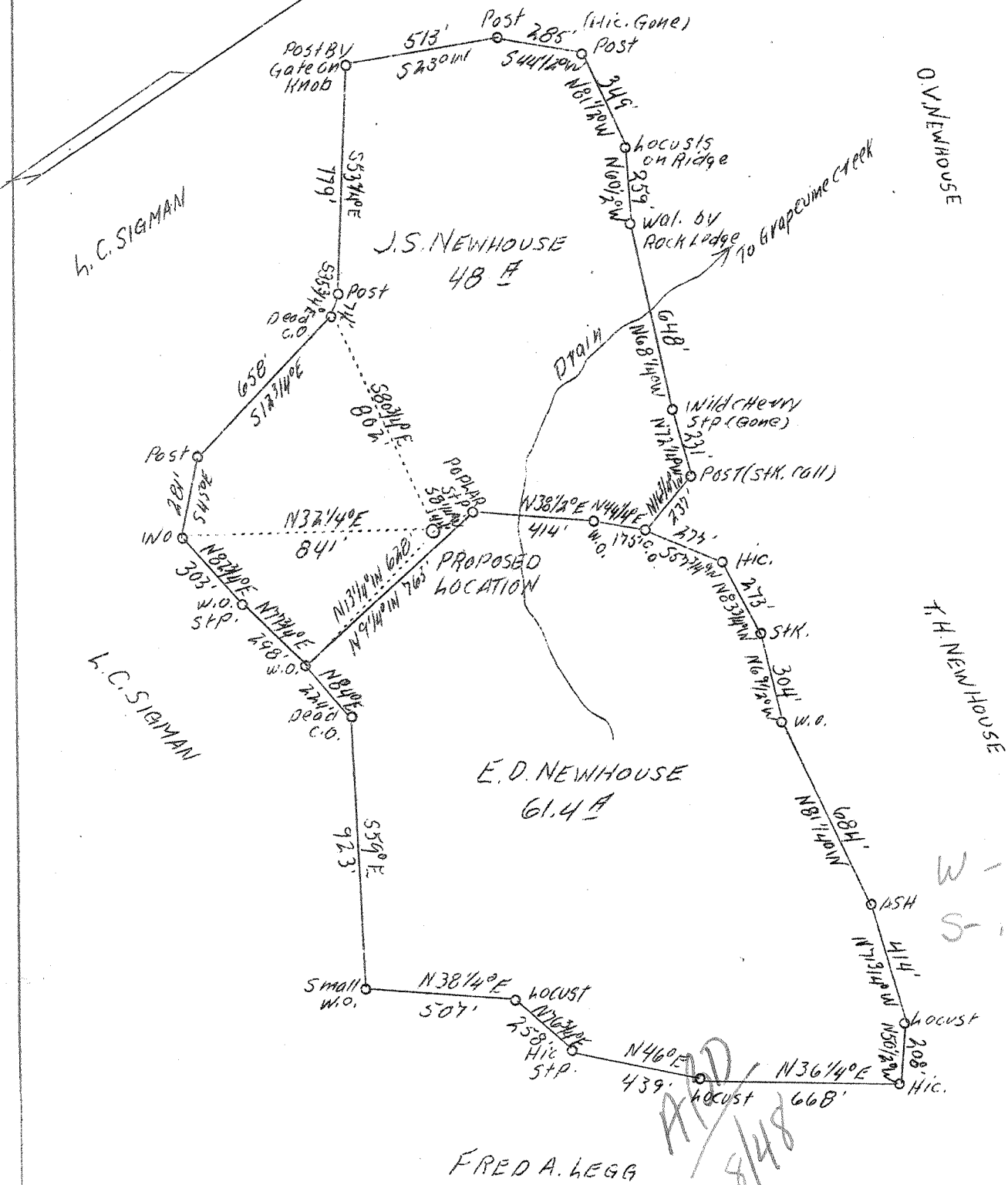


LATITUDE 38° 30'

LONGITUDE 81° 35'

R. B. BALDWIN



New location

|                 |   |  |
|-----------------|---|--|
| Company Address | Spartan Gas Co.,<br>Kanawha Valley Bldg.,<br>Charleston, W. Va. | STATE OF WEST VIRGINIA<br>Department of Mines<br>OIL & GAS DIVISION<br>Charleston  |
| Farm Acres      | J. S. & E. D. Newhouse<br>109.4                                 | WELL LOCATION MAP  |
| Well (Farm) No. | One   |  |
| Serial No.      | S-12  | File No. <u>Kan-638</u>  |
| Elevation (SL)  | 851.4   | x Denotes location of well on U. S. Topographic Maps, scale 1 to 62,500, latitude and longitude lines being represented by border lines as shown.<br><br>- Denotes one inch spaces on border line of original tracing. |
| Quadrangle      | Charleston N.   |  |
| County          | Kanawha   |  |
| District        | Poca  |  |
| Engineer        | Robert S. Hyde  |  |
| Eng. Reg. No.   | 646   |  |
| Date            | May 25, 1939  |  |
| Scale           | 1" = 500'   |  |

6-6192 ✓

WEST VIRGINIA DEPARTMENT OF MINES  
OIL & GAS DIVISION  
W E L L R E C O R D

Permit No. Kan-638  
Charleston Quad.

Gas Well

|                   |   |                            |
|-------------------|---|----------------------------|
|                   |   | CASING & TUBING            |
| Company           | Spartan Gas Co.                                 | 13-3/8 56                  |
| Address           | 518 Kanawha Valley Bldg.,<br>Charleston, W. Va. | 10 560 pulled              |
| Farm              | J. S. & E. D. Newhouse ACRES 109.4              | 8-5/8 1746-10              |
| Location          | Grapevine Creek                                 | 6-5/8 24# 4893-4           |
| Well No.          | 1 (Serial S-12) ELEV. 855                       | 2 4987-2                   |
| District          | Poca - Kanawha County                           |                            |
| Surface & Mineral | J.S. & E.D. Newhouse, Sissonville, W.Va.        |                            |
| Commenced         | July 6, 1939                                    |                            |
| Completed         | Sept. 30, 1939                                  | 8-5/8 Casing cemented.     |
| Open Flow         | 32/10ths Water in 6-5/8" 24#                    | 350 bags and 20 bags       |
| Volume            | 2,090,000 c.f.                                  | Aquagel. 6-5/8" - 25 bags. |
| Rock Pressure     | 1250 lbs. 48 hrs.                               |                            |
| Water             | -   |                            |

|                |      |      |                           |
|----------------|------|------|---------------------------|
| Rod Rock       | 0    | 95   |                           |
| Sl. & Shells   | 95   | 138  |                           |
| Sand           | 138  | 149  |                           |
| Sl. & R. R.    | 149  | 305  |                           |
| Blk. Slate     | 305  | 326  |                           |
| Wh. Slate      | 326  | 420  |                           |
| Sand           | 420  | 515  |                           |
| Slate          | 515  | 640  |                           |
| Sand           | 640  | 705  |                           |
| Blk. Slate     | 705  | 1010 |                           |
| Salt Sand      | 1010 | 1443 | HFW 1075                  |
| Wh. Slate      | 1443 | 1447 |                           |
| Maxon Sand     | 1447 | 1497 |                           |
| Slate          | 1497 | 1500 |                           |
| Little Lime    | 1500 | 1525 |                           |
| Pencil Cave    | 1525 | 1530 |                           |
| Big Lime       | 1530 | 1687 |                           |
| Big Injun Sand | 1687 | 1726 |                           |
| Lime & Shale   | 1726 | 2130 | Gas 2045                  |
| Brown Shale    | 2130 | 2135 |                           |
| Berea Sand     | 2135 | 2143 |                           |
| Slate & Shells | 2143 | 2586 |                           |
| Wh. Slate      | 2586 | 3385 |                           |
| Lime Shells    | 3385 | 3690 |                           |
| Brown Shale    | 3690 | 3725 |                           |
| Slate          | 3725 | 3960 |                           |
| Brown Shale    | 3960 | 4030 |                           |
| Wh. Slate      | 4030 | 4475 |                           |
| Brown Shale    | 4475 | 4730 |                           |
| Wh. Slate      | 4730 | 4758 |                           |
| Brown Shale    | 4758 | 4824 |                           |
| Cornif. Lime   | 4824 | 4935 |                           |
| Oriskany       | 4935 | 4975 | Gas 4940-4949 & 4957-4961 |
| Total Depth    |      | 4975 |                           |