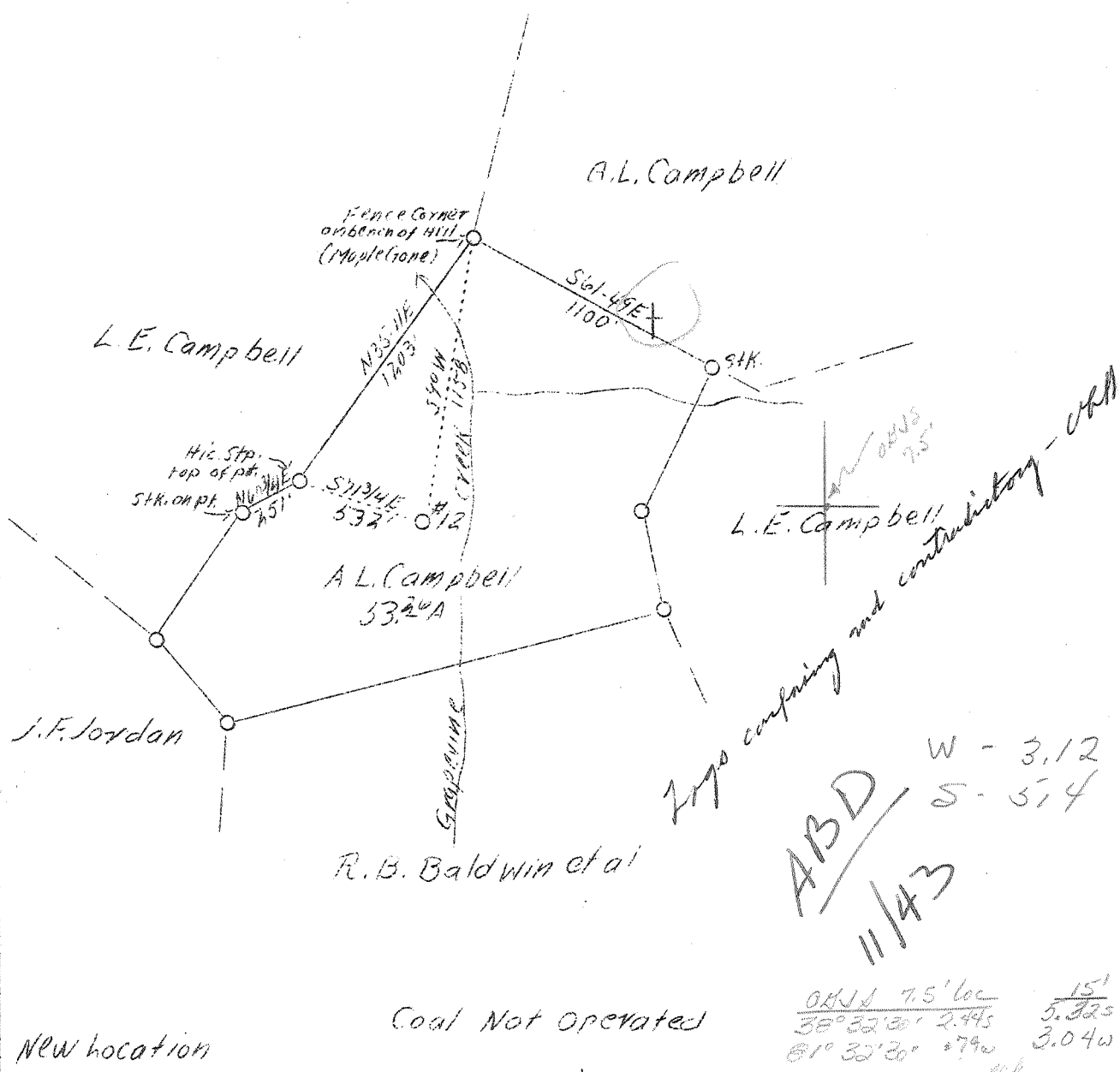


LATITUDE 38° 35'

LONGITUDE 81° 30'



New location

Coal Not Operated

$\frac{0.815 \times 7.5' \text{ loc}}{38^\circ 32' 30''} = 2.445$
 $\frac{15'}{31^\circ 32' 30''} = 3.04w$

Company	Brawley-Roid Oil & Gas Co.,	STATE OF WEST VIRGINIA
Address	Charleston, W. Va.	Department of Mines
Farm	A. L. Campbell	OIL & GAS DIVISION
Acres	53.26	Charleston
Lease No.	36	
Well (Farm) No.	1	WELL LOCATION MAP
Serial No.	12	File No. <u>KAN-639</u>
Elevation (SL)	909.02?	
Quadrangle	Kenna SE.	
County	Kanawha	
District	Poca	
Engineer	Lorin H. Talbot	x Denotes location of well on U. S. Topo- graphic Maps, scale 1 to 62,500, latitude and longitude lines being represented by border lines as shown.
Eng. Reg. No.	412	- Denotes one inch spaces on border line of original tracing.
Date	June 12, 1939	
Scale	1" - 660'	

WEST VIRGINIA DEPARTMENT OF MINES

OIL & GAS DIVISION

WELL RECORD

Permit No. Kan-639

Gas Well

Koma Quad.

CASING & TUBING

Company	Braxley-Reid Oil & Gas Co.-	8	1789	1789
	United Fuel Gas Company	7	4916	4916
Address	Charleston, W. Va.			
Farm	A. L. Campbell ACRES 53.26			
Location	Grapevine Creek			
Well No.	12	ELEV. 909.02		
District	Poca - Kanawha County			
Surface	A. L. Campbell, Sissonville, W. Va.			
Mineral	Same 1/2 & 1/2 A. E. Cavender, et al			
Commenced	7/10/39 - completed 10/12/39			
Shot	10/13/39 - Depth 5040			
Open Flow	20/10ths Water in 2 inch			
Volume	130,000 c.f. B.S. 750,000 c.f. A. S.			
Rock Pressure	1070 lbs. 50 hrs.			
Water	-			

Formation	Color	Top	Base	Result	Formation	Color	Top	Base	Result
Conductor		0	16						
Red Clay		0	25						Shut down to shoot Oct. 12, 1939
Broken Sandstone		25	35						Cleaning out time - 13 days
Sand		35	60						Cleaned out to 5062
Slate & Shell		60	85						Before shot 20/10 Water - 2 inch pipe
Red Rock		85	125						After shot 3/10 Water - 7 inch O.D. 22 lb.
Slate & Shell		125	220						Shot with 60 qt. Oct. 13, 1939
Red Rock		220	269						Top of shot 5029
Slate & Shell		269	295						Bottom of shot 5040
Sand		295	330						
Red Rock		330	347						
Slate & Shell		347	440						
Sand		440	610						
Slate & Shells		610	740						
Sand		740	857						
Slate & Shells		857	1015						
Sand		1015	1050						
Slate & Shells		1050	1127						
Salt Sand		1127	1482						
Slate		1482	1510						Showing of gas 1186
Maxon Sand		1510	1556						Salt water-hole full 1168
Slate		1556	1560						
Little Lime		1560	1592						
Pencil Cave		1592	1595						
Big Lime		1595	1753						
Injun Sand		1753	1776						
Slate		1776	1785						
Lime Shell		1785	1795						
Slate & Shells		1795	1835						
Lime		1835	1854						
Slate & Shells		1854	2172						Showing of gas @ 2017 in lime shell
Brown Shale		2172	2184						
Berea & Shell		2184	2190						
Slate & Shells		2190	3700						
Brown Shale		3700	3785						
Slate & Shells		3785	3860						
Shale - Brown		3860	3976						Showing of shale gas @ 3960
Slate & Shells		3976	4500						Showing of gas - 4500
Shale - brown		4500	4750						
Shale - white		4750	4820						
Shale - black		4820	4900						
Coniferous		4900	5018						@ 4916 Halliburton Steel Line
Oriskany		5018	5064						measure - 9/26/39
Black Lime		5064	5072						
Total Depth			5072						Gas - 1st pay 5029 to 5031

WEST VIRGINIA DEPARTMENT OF MINES

OIL & GAS DIVISION

WELL RECORD

Permit No. Kan-639

Gas Well

Kenna Quad.

CASING & TUBING

Company	United Fuel Gas Co.	Cond.	16	16
Address	Charleston, W. Va.	10	461	461
Farm	A. L. Campbell ACRES 53.26	8-5/8	1789	1789
Location	Grapevine Creek	7	4916	4916
Well No.	4856 ELEV. 908.5			
District	Poca - Kanawha County			
Surface & Mineral Address	A. L. Campbell			
Commenced	July 13, 1939			
Completed	Oct. 12, 1939			
Shot	10/13/39 - Depth 5026			
Open Flow	-			
Volume	Gas Well			
Salt Water	1168			

Formation Color & Top Base Result *Formation Color & Top Base Result*

Cond.	0	16		
Red Rock	16	25		
Broken Sand	25	35		
Sand	35	60		
Slate & Shells	60	85		
Red Rock	85	125		
Slate & Shells	125	220		
Red Rock	220	269		
Slate & Shells	269	295		
Sand	295	330		
Red Rock	330	347		
Slate & Shells	347	440		
Sand	440	610		
Slate & Shells	610	740		
Sand	740	857		
Slate & Shells	857	1015		
Sand	1015	1050		
Slate & Shells	1050	1127	Gas 1136	show
Salt Sand	1127	1482	Water 1168	Hole full
Slate	1482	1510		
Maxon Sand	1510	1556		
Slate	1556	1560		
Little Lime	1560	1592		
Pencil Cave	1592	1595		
Big Lime	1595	1753		
Injun Sand	1753	1776		
Slate	1776	1785		
Lime Shells	1785	1795		
Slate & Shells	1795	1835		
Lime	1835	1854		
Slate & Shells	1854	2172	Gas 2071	
Brown Shale	2172	2184		
Berea Sand	2184	2190		
Slate & Shells	2190	3700		
Shale	3700	3785		
Slate & Shells	3785	3860		
Brown Shale	3860	3976	Gas 3960	show
Slate & Shells	3976	4500		
Brown Shale	4500	4750		
White Slate	4750	4820		
Black Shale	4820	4900		
Corniferous Lime	4900	5018		
Oriskany Sand	5018	5062	Gas 5029-5031	pay
Lime	5062	5072		
Total Depth	5072			

Filled back to 5039