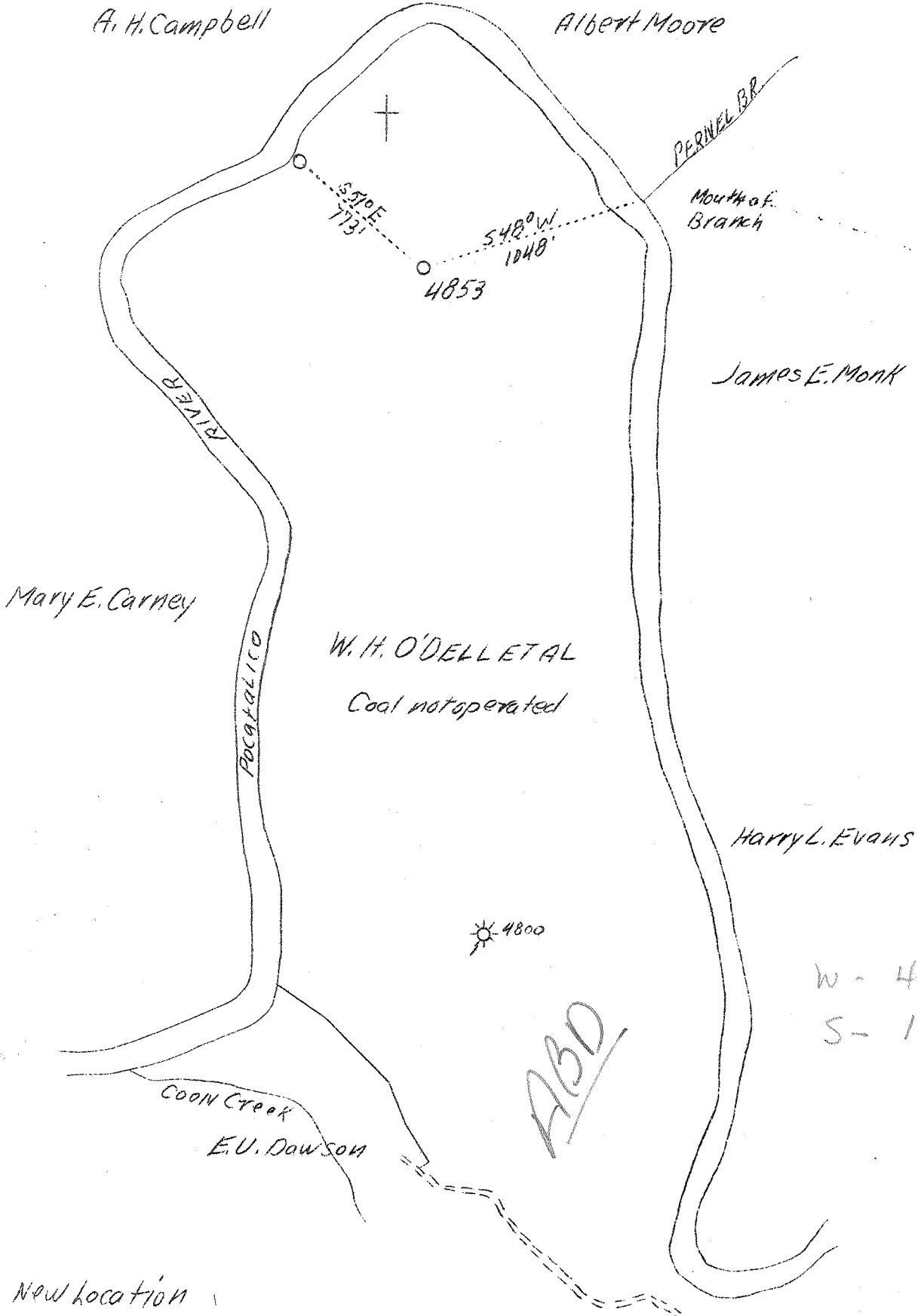


47A

LATITUDE 38° 35'

LONGITUDE 81° 30'



New location

Company	United Fuel Gas Co.
Address	Charleston, W.Va.
Farm	W.H.O'Dell
Acres	228
Locs No.	40128
Serial No.	4853
Well (Farm) No.	2
Quadrangle	SE Kenna
County	Kanawha
District	Poca
Eng.	G.A. Cunningham
Eng. Reg. No.	659
File No.	64 - 73
Date	6/23/39
Scale	1" = 660'

STATE OF WEST VIRGINIA
 Department of Mines
 OIL AND GAS DIVISION
 Charleston

WELL LOCATION MAP

File No. MAN-642

x Denotes location of well on U.S. Topographic Maps, scale 1 to 62,500, latitude and longitude lines being represented by border lines as shown.

- Denotes one inch spaces on border line of original tracing.

✓

WEST VIRGINIA DEPARTMENT OF MINES

OIL & GAS DIVISION

W E L L R E C O R D

Permit No. Kan-542

Gas Well

Kenna Quad.

CASING & TUBING

Company	United Fuel Gas Co.	14	288	pulled
Address	Charleston, W. Va.	10	485	485
Farm	W. H. O'Dell, et al #2 ACRES 288	8-5/8	1837	1837
Location	Poca River	7	4832	4833
Well No.	4853 ELEV. 713.0			
District	Poca - Kanawha County			
Surface & Mineral	W. H. O'Dell, et al, Charleston, W.Va.			
Commenced	July 22, 1939			
Completed	Oct. 14, 1939			
Date shot	10/16/39 - Depth 4940			
Open Flow	-			
Volume	Gas Well 6981 mcf			
Rock Pressure	-			
Salt Water	1135			

Final gage 3558 mcf } Vol XVI

Formation Color ^{1/2} *Top Base Result* *Formation Color* ^{1/2} *Top Base Result*

Soil		0	7						
Lime		7	35						
Sand		35	81						
Red Rock		51	126						
Lime		126	146						
Slate		146	156						
Red Rock		156	276						
Slate & Shells		276	344						
Red Rock		344	399						
Slate & Shells		399	454						
Sand		454	564						
Slate		564	587						
Sand		587	660						
Slate & Shells		660	690						
Sand		690	722						
Slate & Shells		722	750						
Sand		750	790						
Slate & Shells		790	872						
Sand		872	905						
Lime		905	915						
Slate & Shells		915	1042						
Gas Sand		1042	1105						
Slate & Shells		1105	1114						
Salt Sand		1114	1420	W 1135	Hole full				
Break		1420	1423						
Sand		1423	1498						
Slate		1498	1507						
Little Lime		1507	1528						
Slate		1528	1532						
Big Lime		1532	1698						
Injun Sand		1698	1742						
Slate & Shells		1742	1910						
White Slate		1910	2111						
Brown Shale		2111	2121						
Berca		2121	2141						
Slate & Shells		2141	3742						
Shale & Shells		3742	4003						
White Slate		4003	4452						
Slate & Shells		4452	4817						
Corniferous Lime		4817	4925						
Oriskany Sand		4925	4921	Gas 4949-4955	Pay				
Lime		4971	4972						
Total Depth			4972						