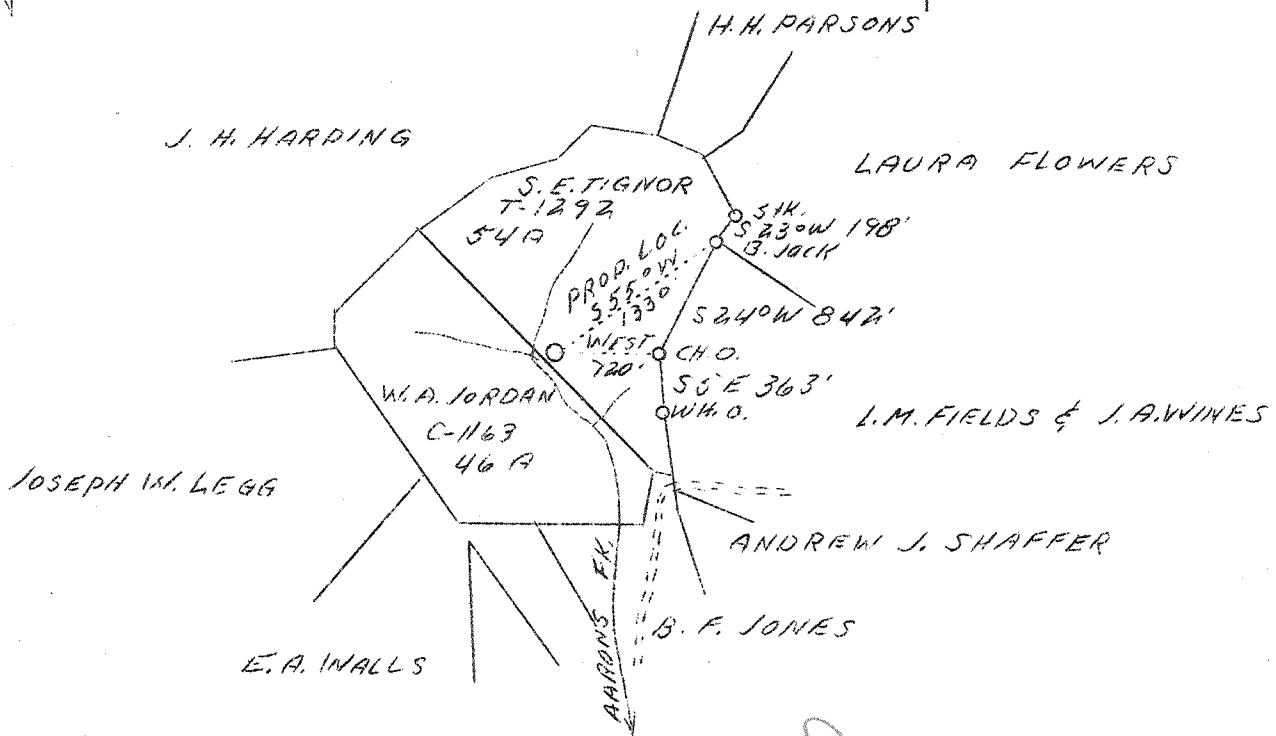


LATITUDE 38°35'

LONGITUDE 81°30'



ADD
5/44

W - 2.15
S - 3.88

New location

Company	Columbian Carbon Co.
Address	Box 1240 Charleston, W.Va.
Farm	S.E. Tignor & W.A. Jordan
Acres	54 & 46
Lease No.	T - 1292 & C - 1163
Well (Farm) No.	1
El. (S.L.)	961.2
Quadrangle ^{SE}	Kenna S.E.
County	Kanawha
District	Elk
Eng.	James N. Sell
Eng. Reg. No.	772
Date	6/22/39
Scale	1" = 1320'

STATE OF WEST VIRGINIA
Department of Mines
OIL AND GAS DIVISION
Charleston

WELL LOCATION MAP

File No. 1400-643

x Denotes location of well on U.S. Topographic Maps, scale 1 to 62,500, latitude and longitude lines being represented by border line as shown.

- Denotes one inch spaces on border line of original tracing.



WEST VIRGINIA DEPARTMENT OF MINES

OIL & GAS DIVISION

W E L L R E C O R D

Permit No. Kan-643

Gas Well

Kenna Quad.

CASING & TUBING

Company	Columbian Carbon Co.	14	42-6	42-6
Address	B-1240, Charleston, W. Va.	10-3/4	497-2	497-2
Farm	Tignor & Jordan ACRES 54 & 46	8-5/8	1705-7	1705-7
Location	Aarons Fork	7	5030-0	5030-0
Well No.	1 (GW-431) ELEV. 965.0 DF	2-3/8	5200-8	5200-8
District	Elk - Kanawha County	5	71-1	71-1
Surface	S. E. Tignor, Elkview, W. Va.			
Mineral	Same, et al, 1/3 Columbian Carbon Co.			
Commenced	7/10/39			
Completed	10/29/39			
Shot	10/30/39 - Depth 5120-40 SLM			
Open Flow	-			
Volume	1,157 M. C. F.			
Rock Pressure	950 lbs. 3 days			
Water	100' 1-13" Bailer pr. hr. - 185' 2-13 blr. hr.			
	855' 1-10" " " " 1272' 2 1/2-10 " "			

Formation	Color	H ₂ O	Top	Base	Result	Formation	Color	H ₂ O	Top	Base	Result
Slate			0	15		Slate & Shells			3568	3900	Gas 3645
Shale			15	105							Show
Red Rock			105	120	W 100'	Brown Shale			3900	4050	
Slate			120	135		Slate & Shells			4050	4397	
Sand			135	150		Lime			4397	4407	
Slate			150	190	W 185	Slate & Shells			4407	4554	
Red Rock			190	214		Brown Shale			4554	4898	
Slate			214	230		White Slate			4898	4926	
Red Rock			230	250		Black Shale			4926	4934	HSLM
Slate			250	320		Corniferous Lime	HSLM		4978	5096	*
Red Rock			320	338		Oriskany Sand			5096*	5134	
Slate			338	348		Black Lime			5134	5158	
Red Rock			348	375		Oriskany Sand			5158	5172	*
Slate			375	400		Lime			5172*	5185	SLM
Lime			400	425		Total Depth				5185	SLM
Slate & Shells			425	500					PAY: 5119-5129;	5134-5139	
Sand			500	570							
Slate			570	622							* Per Sample Examination
Sand			622	680							
Slate			680	702							
Red Rock			702	727							
Slate			727	800							
Sand			800	865	W 855						
Slate			865	915							
Sand			915	963							
Slate & Shells			963	1095							
Sand			1095	1145	Gas 1106 show						
Slate			1145	1165							
Sand			1165	1175							
Slate			1175	1194	Oil & Gas 1262 Show						
Salt Sand			1194	1667	W 1272						
Slate			1667	1670							
Lime Shell			1670	1680							
Slate			1680	1684	SLM						
Big Lime		SLM	1684	1814							
Big Injun Sand			1814	1840	Oil 1824-32 Small Show						
Slate & Shells			1840	2275	Gas 2150 Show						
Lime Shell			2275	2285							
Slate & Shells			2285	3428							
Brown Shale			3428	3450							
Slate & Shells			3450	3562							
Lime Shell			3562	3568							

CEMENT RECORD:

8/24/39 Ran 125 Sacks Universal Cement mixed with 1 Sack Aquagel 2% solution. Ran 5 Sacks Aquagel ahead of cement - 4% solution. Run plug and 10' spacer on Aquagel and run plug on top cement. Pipe went back to bottom O.K. 15' cement left in pipe.

Dallas Holley, Cementer, Halliburton Oil Well Cementing Company

10/14/39 Ran 25 Sacks Alpha Cement - 10' spacer. Ran plug on top cement. 18' solid cement left in hole.

Dallas Holley, Cementer, Halliburton Oil Well Cementing Company