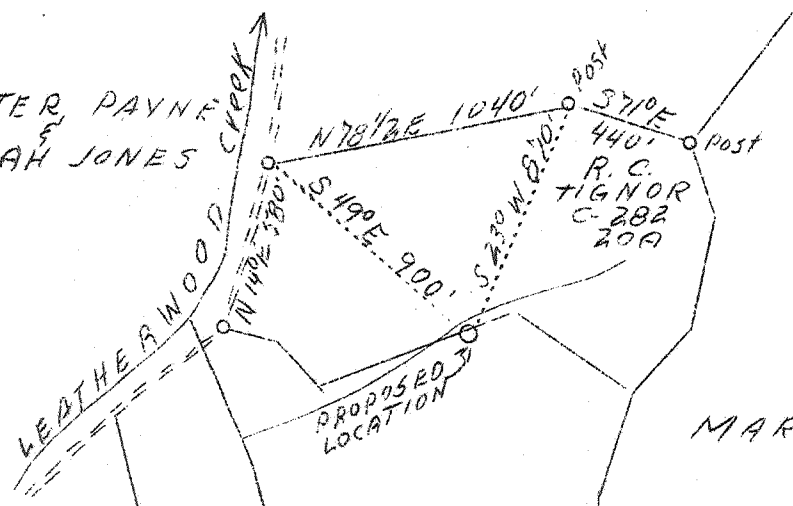


LATITUDE 38° 35'

LONGITUDE 81° 30'

EMMA J. PRICE
 WALTER PAYNE
 SARAH JONES



ALFRED GRIFFITH
 C-281
 54A

MARY BEAVER

JOHN PRICE

VAN CANTERBURY

ABD
 4/43

W-1, 08
 5-3, 8

NEW location

Company	Columbian Carbon Co.
Address	Box 1240 Charleston W.Va.
Farm	R.C.Tignor & Alfred Griffith
Acres	20 & 54
Lease No.	C - 282, C - 281
Well(Farm)No.	1
El.(S.L.)	865
Quadrangle	Kenna S.E.
County	Kanawha
District	Poca
Eng.	James N. Scoll
Eng. Reg. No.	772
Date	6/23/39
Scale	1" = 660'

STATE OF WEST VIRGINIA
 Department of Mines
 OIL AND GAS DIVISION
 Charleston

WELL LOCATION MAP

File No. Kam-645

x Denotes location of well on U.S. Topographic Maps, scale 1 to 62,500, latitude and longitude lines being represented by border lines as shown.

- Denotes one inch spaces on border line of original tracing.



WEST VIRGINIA DEPARTMENT OF MINES

OIL & GAS DIVISION

W E L L R E C O R D

Permit No. Kan-645

Gas Well

Kenne. Quad.

CASING & TUBING

Company	Columbian Carbon Co.	14"	41-11	41-11
Address	Box 1240, Charleston, W. Va.	10-3/4	398-7	pulled
Farm	Tignor & Griffith ACRES 20 & 54	8-5/8	1626-3	1626-3
Location	Leatherwood Creek	7"	5003-4	5003-4
Well No.	1 (GW-432) ELEV. 868.2 DF	2-3/8	5168-4	5168-4
District	Poca - Kanawha County	5" OD	70-3	70-3
Surface Address	Tignor & Griffith, et al	No packer		
Commenced	Contact Columbian Carbon Co.			
Completed	7/15/39			
Volume	10/22/39			
Rock Pressure	442,000			
Oil	1020 lbs. 70 hrs.			
Salt Water	2,082 Show			
	1154 4 blrs. per hr.			
	1202 HFW			

Formation	Color	H ₂ O	Tap	Base	Result	Formation	Color	H ₂ O	Tap	Base	Result
Clay			0	27		Brown Shale			2155	2165	Oil 2082 show
Slate			27	37							
Red Rock			37	54		Slate & Shells			2165	2574	
Slate			54	66		Lime Shell			2574	2586	
Red Rock			66	71		Slate & Shells			2586	3366	
Lime			71	100		Brown Shale			3366	3456	
Red Rock			100	165		Slate			3456	3697	
Slate			165	185		Shale			3697	3725	
Red Rock			185	196		Slate & Shells			3725	3873	
Slate			196	208		Brown Shale			3873	4000	
Sand			208	245		Slate			4000	4050	
Slate			245	255		Brown Shale			4050	4137	
Red Rock			255	260		Slate			4137	4550	
Slate			260	265		Brown Shale			4550	4836	
Red Rock			265	270		White Shale			4836	4869	
Slate			270	285		Brown Shale			4869	4900	
Red Rock			285	334		Black Shale			4900	4950	
Slate			334	340		Corniferous Lime	DIA		4950	5074	SLM (Also per samples)
Sand			340	445							
Slate			445	448		Oriskany Sand	SIM		5074	5151	(Also per samples)
Sand			448	540							
Slate			540	590		Lime			5151	5154	SLM
Sand			590	598		Total Depth				5154	SLM
Slate & Shells			598	650							
Sand			650	682							
Slate			682	750							
Sand			750	820							
Slate			820	860							
Sand			860	935							
Slate			935	965							
Sand			965	974							
Slate			974	1040							
Sand			1040	1055							
Slate			1055	1126							
First Salt Sand			1126	1236	SW 1154						
Slate			1236	1239	HFW 1202						
Second Salt Sand			1239	1370							
Slate			1370	1374							
Lime			1374	1384							
Slate			1384	1436							
Sand			1436	1568							
Slate			1568	1572							
Little Lime			1572	1576							
Slate			1576	1582	SLM						
Big Lime	SLM		1582	1739							
Big Injun Sand			1739	1752							
Slate & Shells			1752	2155							

PAY: 5104-5107

CEMENT RECORD:

8/13/39 Ran 5 Sacks Aquagel 6% solution ahead of cement. Ran 77 Sacks Alpha cement mixed with 1% solution Aquagel. Plug between Aquagel & cement. Ran 10' spacer. 13' solid cement left in hole.
 Dallas Holley, Cementer
 10/8/39 Ran 25 Sacks Alpha cement. No Aquagel. Ran 10' spacer - plug on top cement. 43' solid cement left in pipe.
 Pay Patterson, Cementer - Halliburton Oil Well Cementing Company