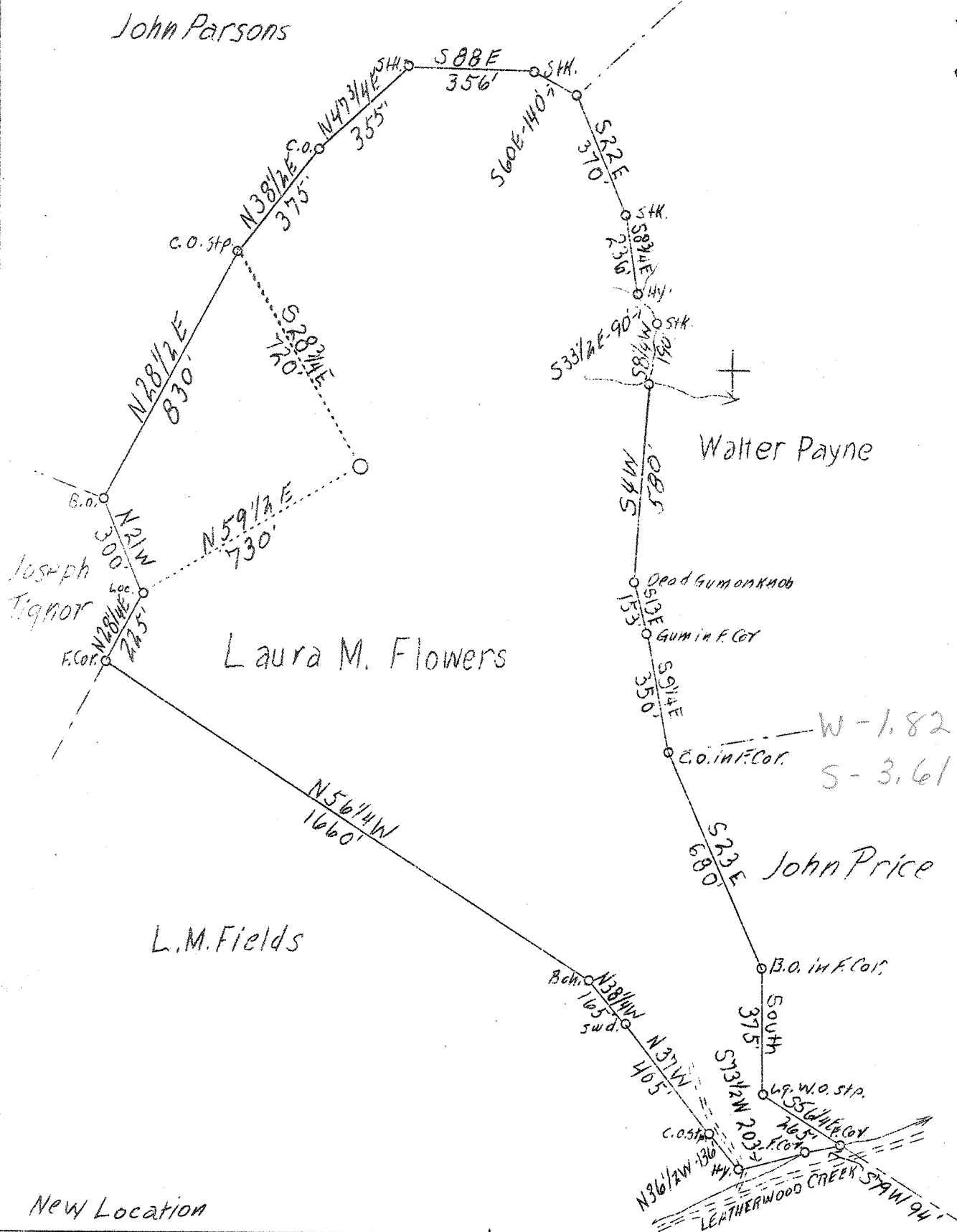


LATITUDE 38° 35'

LONGITUDE 81° 30'



Company Glenn Oil & Gas Co.
 Address Charleston Nat. Bank Bldg.
 Farm Laura Flowers
 Tract 1
 Acres 74.8
 Well (Farm No.) 1
 El. S. L. 1127.32
 Quadrangle SE Konna
 County Kanawha
 District Poca
 Eng. Paul E. Joachim
 Eng. Reg. No. 669
 Date 1/28/39
 Scale 1" = 39'

STATE OF WEST VIRGINIA
 Department of Mines
 OIL AND GAS DIVISION
 Charleston

WELL LOCATION MAP

File No. Kan-647

x Denotes location of well on U.S. Topographic Maps, scale 1 to 62,500, latitude and longitude lines being represented by border lines as shown.

- Denotes one inch spaces on border line of original tracing.



WEST VIRGINIA DEPARTMENT OF MINES

OIL & GAS DIVISION

W E L L R E C O R D

Permit No. Kan-647

Gas Well

Kenna Quad.

CASING & TUBING

Company	Glenn Oil & Gas Co.	13	4	4
Address	Charleston Nat. Bk., Charleston, W.Va.	10	713	pulled
Farm	Laura Flowers Hrs. ACRES 74.8	8-5/8	2025	2025
Location	Leatherwood Ck. of Poca River	7	5195	5195
Well No.	1 ELEV. 1127.32	2 tbg.	5380-11	5380-11
District	Poca - Kanawha County			
Surface & Mineral Address	Laura Flowers Hrs.			
Commenced	Aug. 6, 1939			
Completed	Oct. 21, 1939			
Open Flow	46/10th Water in 7" 24#			
Volume	3,376,620 c.f.			
Rock Pressure	-			
Water	-			

Formation	Color	Top	Base	Result	Formation	Color	Top	Base	Result
Sand		0	30		Brown Shale		2385	2395	
Slate		30	35		Berea Sand		2395	2398	
Sand & Slate		35	75		Slate & Shells		2398	3150	
Red Rock		75	100		Slate		3150	4060	
Sand		100	175		Slate	brn	4060	4240	
Red Rock		175	190		Slate	wh	4240	4720	
Slate		190	240		Brown Shale		4720	5010	G 4767
Sand		240	275		Slate	wh	5010	5040	
Slate & Red Rock		275	290		Brown Shale		5040	5070	
Sand		290	300		Shale	blk	5070	5182	
Slate & Red Rock		300	425		Corniferous		5182	5294	
Sand		425	440		Oriskany		5294	5336	
Fire Clay & Slate		440	465		Gas	5316-5321	120/10 W 2"		
Sand		465	485		"	5321-5327	46/10 W 7"	24#	
Slate, Red Rock		485	540		Line		5336	5346	
Sand		540	560		Oriskany		5346	5381	
Slate & Red Rock		560	590						
Sand		590	600						
Slate		600	650						
Sand		650	715						
Slate		715	735						
Sand		735	840						
Slate		840	905						
Sand		905	920						
Slate	blk	920	950						
Sand		950	1042						
Slate	blk	1042	1070						
Slate	wh	1070	1080						
Sand		1080	1110						
Slate		1110	1135						
Sand		1135	1145						
Slate	blk	1145	1267						
Sand		1267	1310						
Slate		1310	1335						
Sand		1335	1363						
Slate		1363	1368						
Salt Sand		1368	1655	Gas show					1370
				O&G show					1433
				Water					1433
Slate		1655	1670						
Sand		1670	1807						
Little Lime		1807	1813						
Pencil Cave		1813	1816						
Big Lime		1816	1960						
Big Injun		1960	1995						
Slate & Shells		1995	2385						