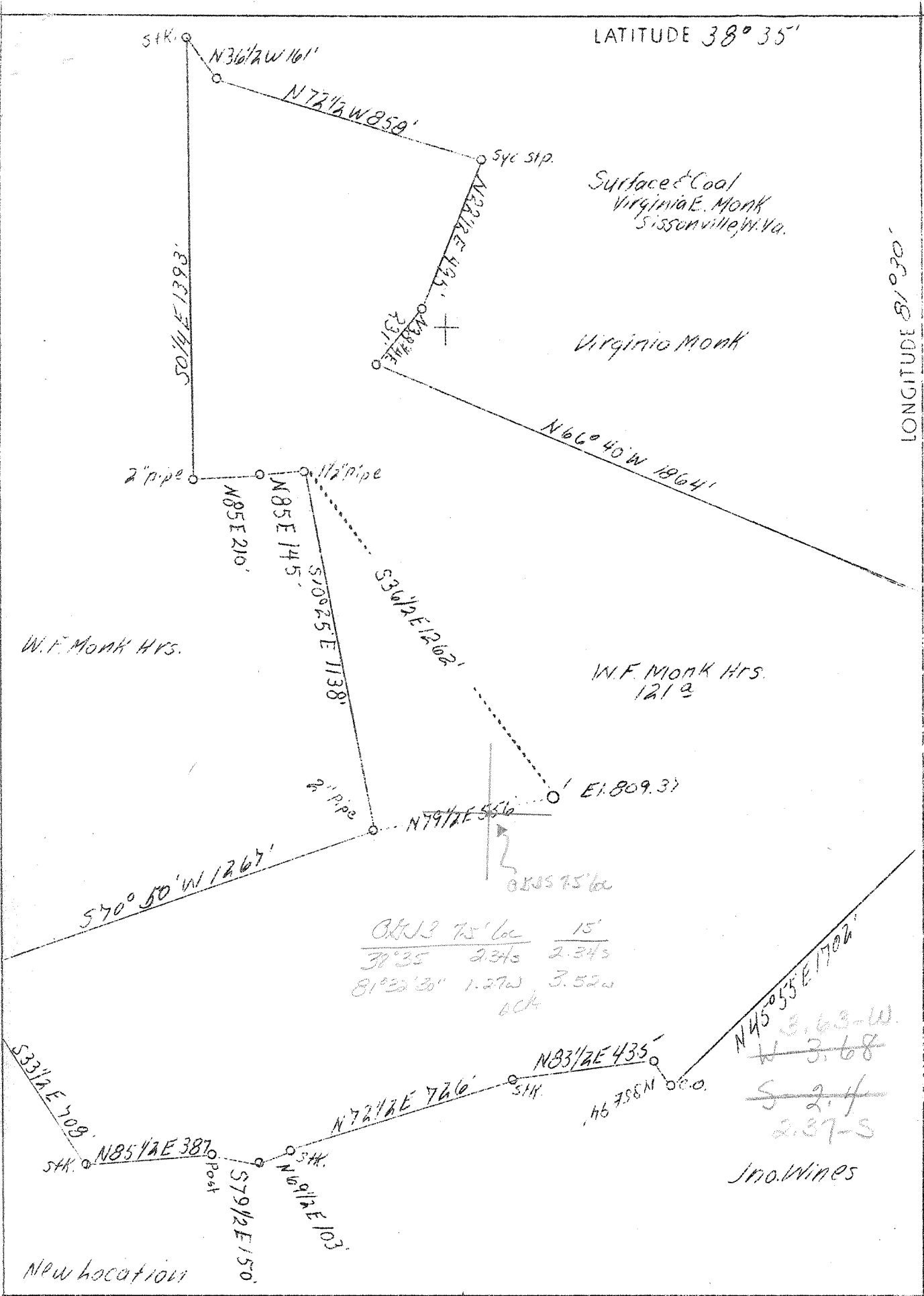


M



Company	South Penn Oil Co.
Address	411 - 7th Ave., Pittsburgh, Pa.
Farm	W. F. Monk
Acres	121
Lease No.	79620
Well (Farm) No.	1
Elevation (SL)	809.37
Quadrangle	SE Kenna
County	Kanawha
District	Poca
Engineer	Emmon Haines
Eng. Reg. No.	-
Date	July 1, 1939
Scale	1" - 400'

STATE OF WEST VIRGINIA  
 Department of Mines  
 OIL & GAS DIVISION  
 Charleston

WELL LOCATION MAP

File No. Kenn-648 D

x Denotes location of well on U. S. Topographic Maps, scale 1 to 62,500, latitude and longitude lines being represented by border lines as shown.

- Denotes one inch spaces on border line of original tracing.

WEST VIRGINIA DEPARTMENT OF MINES

OIL & GAS DIVISION  
W E L L R E C O R D

Permit No. Kan-648  
Kanna Quad.

Gas Well  
CASING & TUBING

Company	South Penn Oil Co.	16	21-8	Pulled	5-3
Address	411 - 7th Ave., Pgh. Pa.	13-3/8	426	"	20-11
Farm	W. F. Monk ACRES 121	10	1298-3	Pulled	
Location	Poca River	8-5/8	1790-4	"	5-2
Well No.	1 ELEV. 809.37	7	4945-9		
District	Poca - Kanawha County				
Surface	Va. E. Monk, Sissonville, W.Va.	PACKER RECORD: - Steel Shoe			
Mineral	Same et al	10-3/4	1287	9/7/39	
Commenced	July 27, 1939	3-5/8	1782	9/3/39	
Completed	Nov. 9, 1939	7	4895	10/24/39	
Open Flow	50/10ths Merc. in 7 inch	CASING CEMENTED:			
Volume	12,954,000 c.f.	8-5/8	1782'		
Rock Pressure	1070 lbs. 58 hrs.	7	4895		
Shot	Not shot				
Fresh Water	-				
Salt Water	1160, 1215-1297				

Formation	Top	Base	Results	Formation	Top	Base	Result
Clay	0	30		Slate	4060	4470	
Slate	30	80		Brown Shale	4470	4803	
Lime	80	100		Black Shale	4803	4847	
Red Rock	100	180		Lime Shells	4847	4853	
Slate & Shells	180	190		Black Shale - Marcellus	4853	4873	
Red Rock	190	225		Corniferous	4873	4982	
Slate & Shells	225	300		Oriskany	4982	not drilled through	
Red Rock	300	345		Total Depth	5004		
Slate	345	360					
Red Rock	360	395		Gas 4990 - 24/10 W 2" opp. (284,000 c.f.)			
Slate	395	415		" 4990-7 - 1/210 M. 7" 20# csg.			
Lime	415	430		(6,335,000 c.f.)			
Slate & Shells	430	490		" 4997-9 1/2 - 24/10 M. 7" 20# Csg.			
Sand	490	530		(8,953,000 c.f.)			
Slate & Shells	530	630		" 4999 1/2 - 5003 - 36/10 M. 7" 20# Csg.			
Sand	630	664		(11,004,000 c.f.)			
Black Slate	664	690		" 5003-4 - 50/10 M. 7" 20# csg.			
Slate & Shells	690	760		(12,954,000 c.f.)			
Sand	760	805					
Slate	805	820					
Sand	820	850					
Slate	850	865					
Lime	865	880					
Sand	880	965					
Slate & Shells	965	1024					
Sand	1024	1040					
Slate & Shells	1040	1106					
Lime	1106	1150					
Salt Sand	1150	1515	Salt Water 1160 hole full Water 1210-1215 Water (Salt) 1297 hole full				
Slate	1515	1517					
Little Lime	1517	1576					
Pencil Cave	1576	1578					
Big Lime	1578	1731	Oil 1625-1630 small show Gas 1654 insf. to test				
Big Injun Sand	1731	1753					
Slate & Shells	1753	1770					
Lime	1770	1810					
Slate & Shells	1810	1957					
White Slate	1957	2120					
Slate & Shells	2120	2490					
Lime	2490	2540					
Slate & Shells	2540	3400					
Brown Shale - 44	3400	3510					
Slate & Shells	3510	3920					
Brown Shale	3920	4060	Gas 3950 insf. to test				

WEST VIRGINIA DEPARTMENT OF MINES  
OIL & GAS DIVISION  
W E L L R E C O R D

Permit No. Kan 648-D		Gas Well
Kenna Quad.		CASING & TUBING
Company	South Penn Natural Gas Company	
Address	Union Trust Bldg., Parkersburg, W.Va.	
Farm	W.F. Monk Acres 121	Pulled
Location	Poca River	16 21'8 5'3"
Well No	1-Drill deeper Elev. 809.37	13 3/8 426 20'11"
District	Poca Kanawha County	10 1/2 1296'3 Pulled
Surface	Virginia E. Monk, Sissonville, W.Va.	
Mineral	Virginia E. Monk et al, Sissonville, W.Va.	Pulled
Commenced	Jan. 13, 1943	8 5/8 1790'4 5'2"
Completed	Jan. 27, 1943	7 4945'9
Date shot	2-4-43	Depth 4990- 5008 with 40 qts.
Volume	650,000 C.F. When turned into line	2 3/8 5010'9 Pld.
Rock Pressure	120 lbs. 24 hrs.	(tubing)

DRILLED DEEPER

Started drilling deeper at	5003
✓Oriskany	5003 5026
✓Gern. Lime	5026 5038
<i>Held.</i>	
TOTAL DEPTH	5038 <span style="border: 1px solid black; border-radius: 50%; padding: 2px;">425</span>
FILLED BACK TO	5008

(Old Total Depth showed 5004')

Gas 5003-5007  
Gas 5007-5008